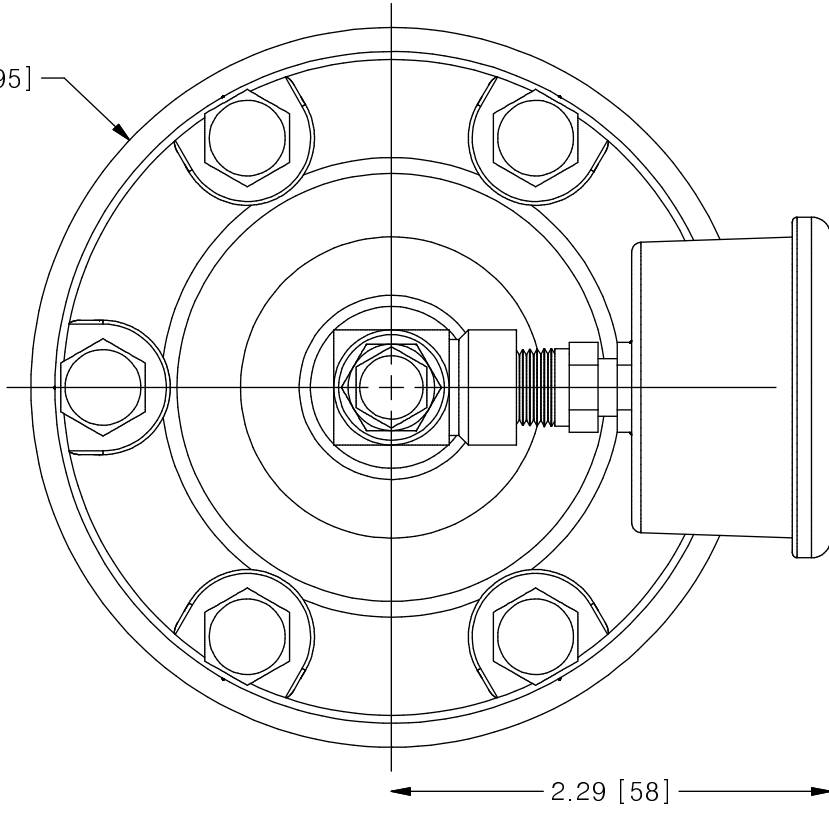


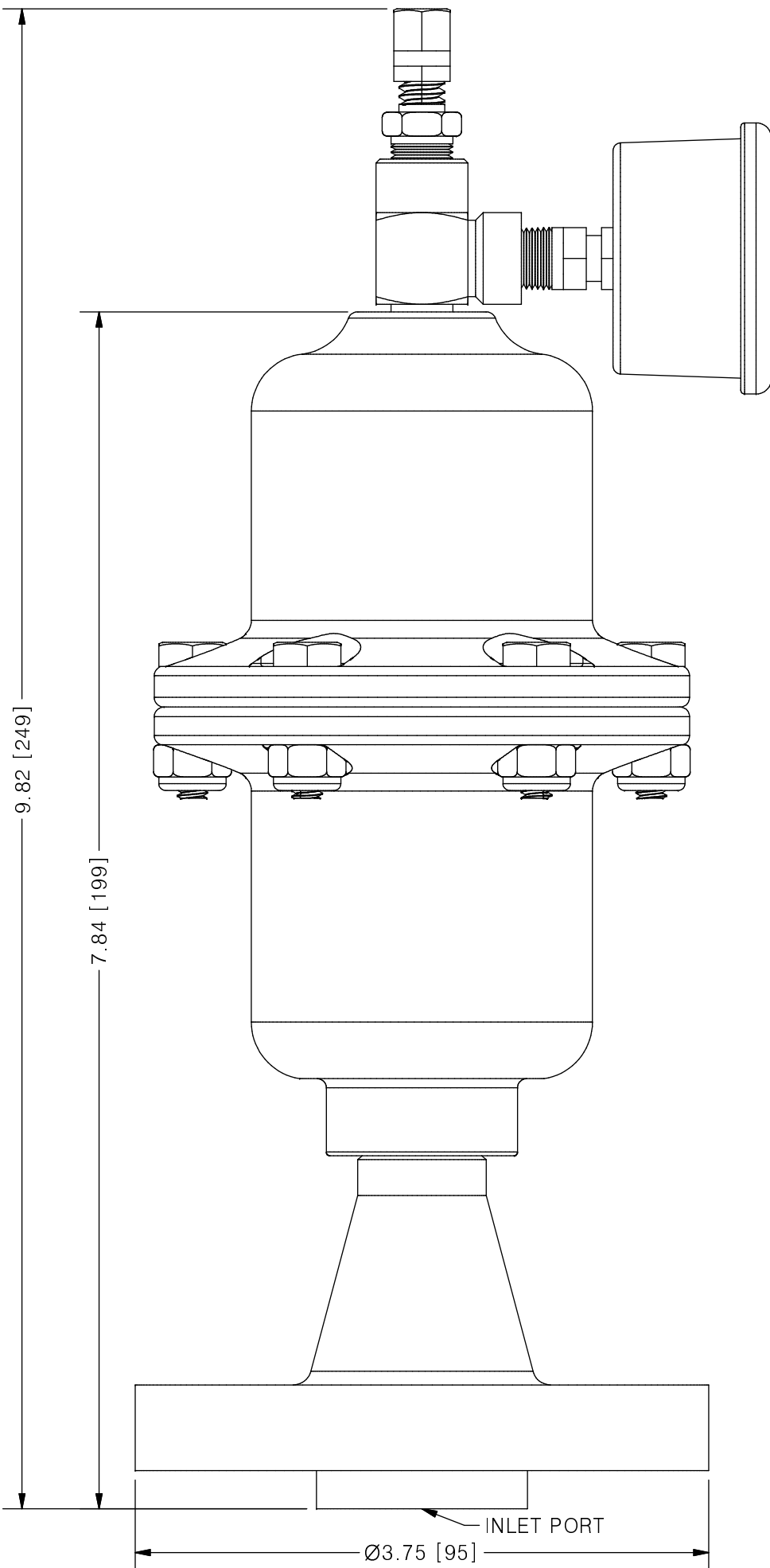
THIS DRAWING IS THE PROPERTY OF PRIMARY FLUID SYSTEMS INC. FROM WHICH A WRITTEN CONSENT FOR APPROVAL SHALL BE REQUIRED PRIOR TO COPYING.

REVISION HISTORY			
REV	DESCRIPTION	DATE	NAME
0	NEW DRAWING	--	--

Ø3.75 [95]



2.29 [58]



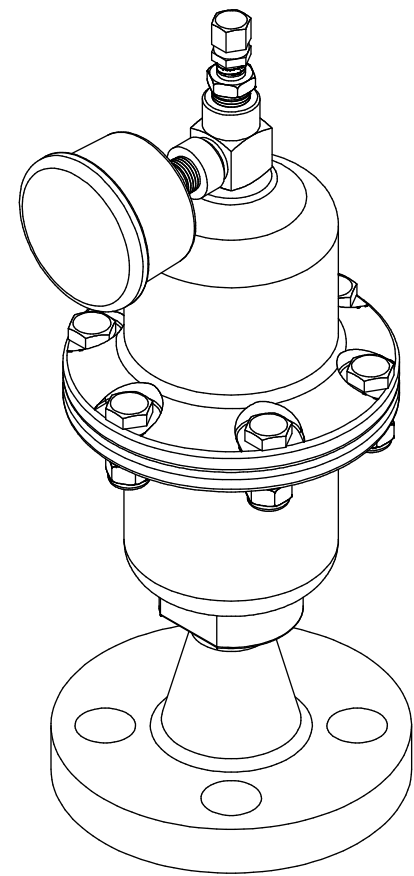
9.82 [249]

7.84 [199]

INLET PORT

Ø3.75 [95]

**ACCU-PULSE®**  
**APHI PULSATION DAMPENER**



SCALE 1 : 2

AVAILABLE BLADDER/BELLOW	
1	EPDM
2	VITON
3	NEOPRENE
4	BUNA-N
5	HYPALON
6	PTFE

NO.	NAME	DESCRIPTION
1	MAX ALLOWABLE OPERATING PRESSURE	1000PSI @ 70°F (21°C)
2	UNIT CAPACITY	10 CU IN
3	INLET PORT	1/2"
4	CONNECTION TYPE	ASTM #600 WN FLANGE
5	BOTTOM HOUSING (WETTED)	316 S/S / C276 / ALLOY 20
6	BLADDER (WETTED)	SEE CHART ABOVE
7	TOP HOUSING	316 S/S
8	GAUGE CASE/BACKING	STAINLESS STEEL AND BRASS
9	TEE	ZINC PLATED STEEL
10	FILL VALVE	STAINLESS STEEL

<b>PRIMARY FLUID SYSTEMS INC.</b> 1050 COOKE BLVD, BURLINGTON, ONTARIO L7T 4A8	PROJECT: AP	SHT: 1 OF 1	DRAWN BY: TJ
	DATE DRAWN: 1/25/2017	SCALE: 1 : 1	UNITS: INCH[mm]
TITLE: ACCU-PULSE HI PULSATION DAMPENER WITH WN FLANGE	MATERIAL: SEE CHART	DWG NO.: APHI-ALLOY-WN_R0	REV# 0
DWG NAME: APHI	APPROVED BY:	CHECKED BY:	THIRD ANGLE PROJECTION
DWG TYPE: PLANAR VIEW 2D			DIMENSIONAL TOLERANCE 0.XX ± 0.25" 11 X 17 SHEET SIZE: <b>B</b>