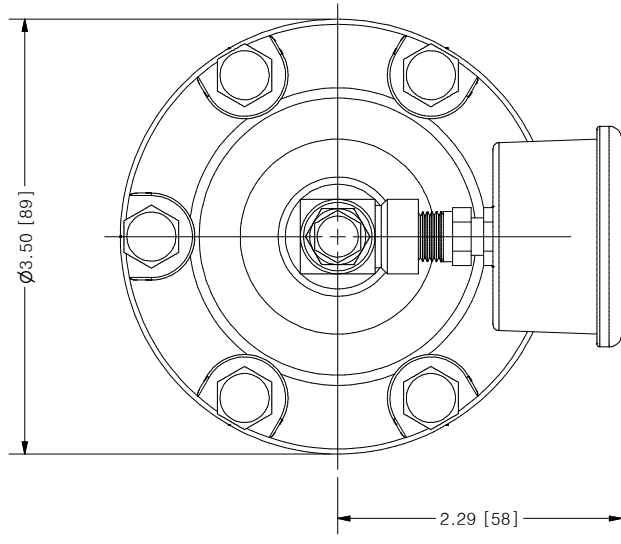
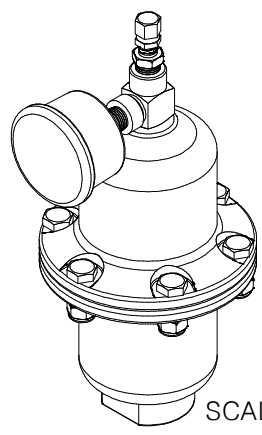


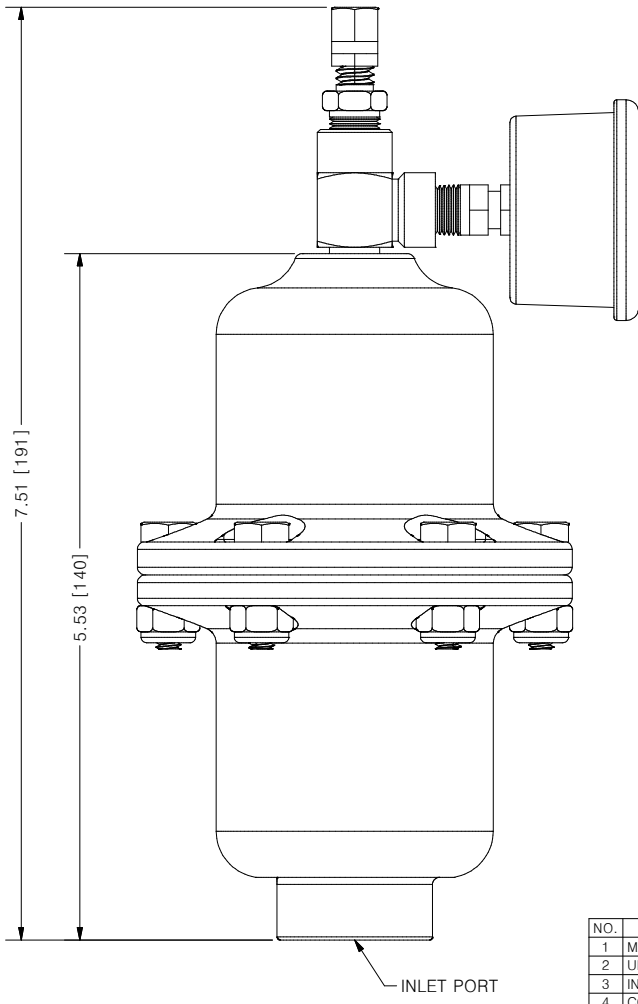
THIS DRAWING IS THE PROPERTY OF PRIMARY FLUID SYSTEMS INC. FROM WHICH A WRITTEN CONSENT FOR APPROVAL SHALL BE REQUIRED PRIOR TO COPYING.



ACCU-PULSE®
API PULSATION DAMPENERS



SCALE 1 : 2



AVAILABLE BLADDER/BELLOW	
	EPDM
	VITON
	NEOPRENE
	BUNA-N
	HYPALON
	PTFE (MAX 150 PSIG)

NO.	NAME	DESCRIPTION
1	MAX ALLOWABLE OPERATING PRESSURE	300PSI @ 70°F (21°C)
2	UNIT CAPACITY	10 CU IN
3	INLET PORT	3/8" (OPTIONAL 1/2")
4	CONNECTION TYPE	NPT
5	BOTTOM HOUSING (WETTED)	316 S/S / C276 / ALLOY 20
6	BLADDER (WETTED)	SEE CHART ABOVE
7	TOP HOUSING	316 S/S
8	GAUGE CASE/BACKING	STAINLESS STEEL AND BRASS
9	TEE	ZINC PLATED STEEL
10	FILL VALVE	STAINLESS STEEL

PRIMARY FLUID SYSTEMS INC. 1050 COOKE BLVD, BURLINGTON, ONTARIO L7T 4A8		PROJECT: AP DATE DRAWN: 8/12/2016	SHT: 1 OF 1 SCALE: 1 : 1 UNITS: INCH[mm]	DRAWN BY: NIKHIL G REV# 1
TITLE: ACCU-PULSE I PULSATION DAMPENERS		MATERIAL: SEE CHART		DWG NO.: DWG TYPE: PLANAR VIEW 2D
DWG NAME: API		DWG NO.: API-ALLOY_RI		
APPROVED BY:		CHECKED BY:		THIRD ANGLE PROJECTION
				DIMENSIONAL TOLERANCE 0.005 + 0.020 11 X 17 SHEET SIZE: B