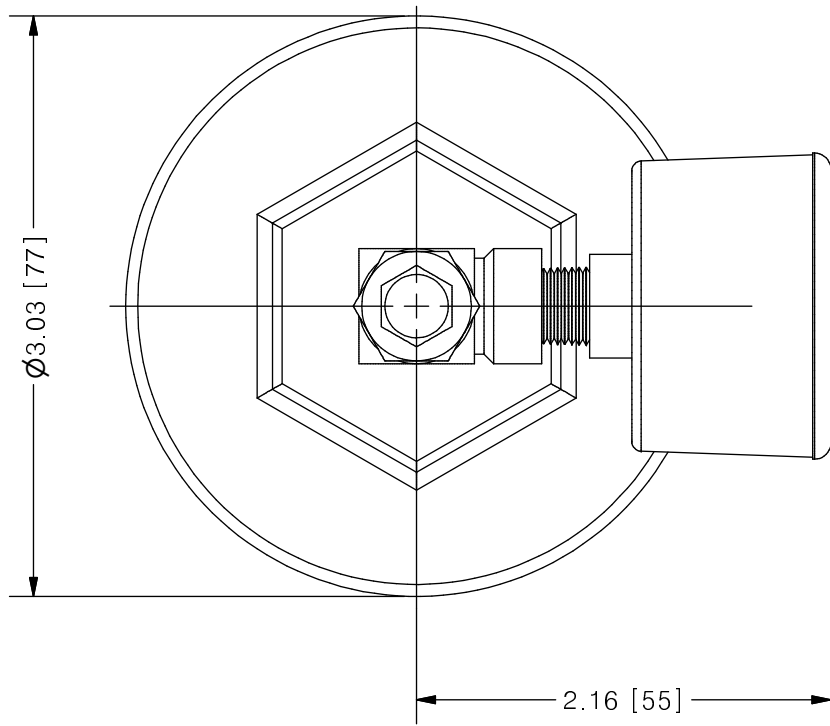
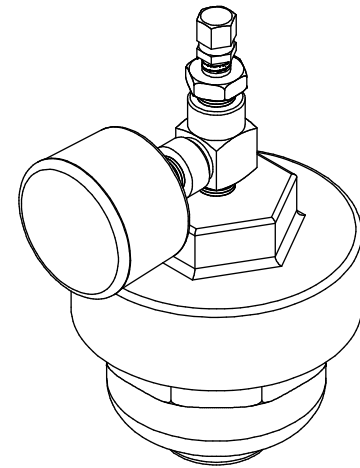


THIS DRAWING IS THE PROPERTY OF PRIMARY FLUID SYSTEMS INC. FROM WHICH A WRITTEN CONSENT FOR APPROVAL SHALL BE REQUIRED PRIOR TO COPYING.

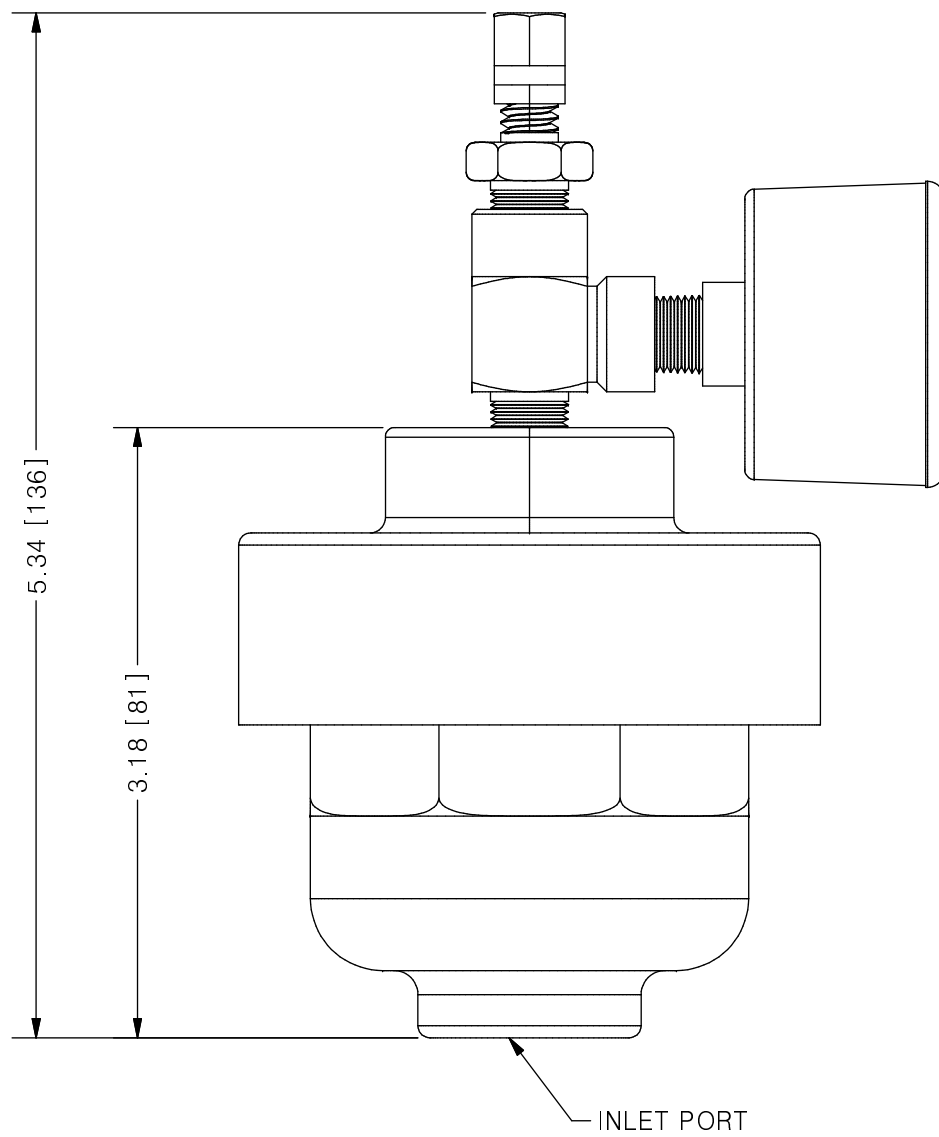
REVISION HISTORY			
REV	DESCRIPTION	DATE	NAME
0	NEW DRAWING	---	---



## ACCU-PULSE® APIF PULSATION DAMPENER



SCALE 1 : 2



AVAILABLE BLADDER/BELLOW	
EPDM	
VITON	
NEOPRENE	
BUNA-N	
HYPALON	
PTFE	

NO.	NAME	DESCRIPTION
1	MAX ALLOWABLE OPERATING PRESSURE	150PSI @ 70°F (21°C)
2	UNIT CAPACITY	4 CU IN
3	INLET PORT	1/2"
4	CONNECTION TYPE	NPT
5	BOTTOM HOUSING (WETTED)	PVC/CPVC
6	BLADDER (WETTED)	SEE CHART ABOVE
7	TOP HOUSING	PVC/CPVC
8	GAUGE CASE/BACKING	PLASTIC AND BRASS
9	TEE	ZINC PLATED STEEL
10	FILL VALVE	BRASS

<b>PRIMARY FLUID SYSTEMS INC.</b> 1050 COOKE BLVD, BURLINGTON, ONTARIO L7T 4A8	PROJECT: AP	SHT: 1 OF 1	DRAWN BY: NIKHIL G
	DATE DRAWN: 8/15/2016	SCALE: 1 : 1	UNITS: INCH[mm]
TITLE: ACCU-PULSE IF PULSATION DAMPENER	MATERIAL: SEE CHART	DWG NO.: APIF-POLY_R0	REV# 0
DWG NAME: APIF	APPROVED BY:	CHECKED BY:	THIRD ANGLE PROJECTION
DWG TYPE: PLANAR VIEW 2D			DIMENSIONAL TOLERANCE 0.XX ± 0.25" 11 X 17 SHEET SIZE: <b>B</b>