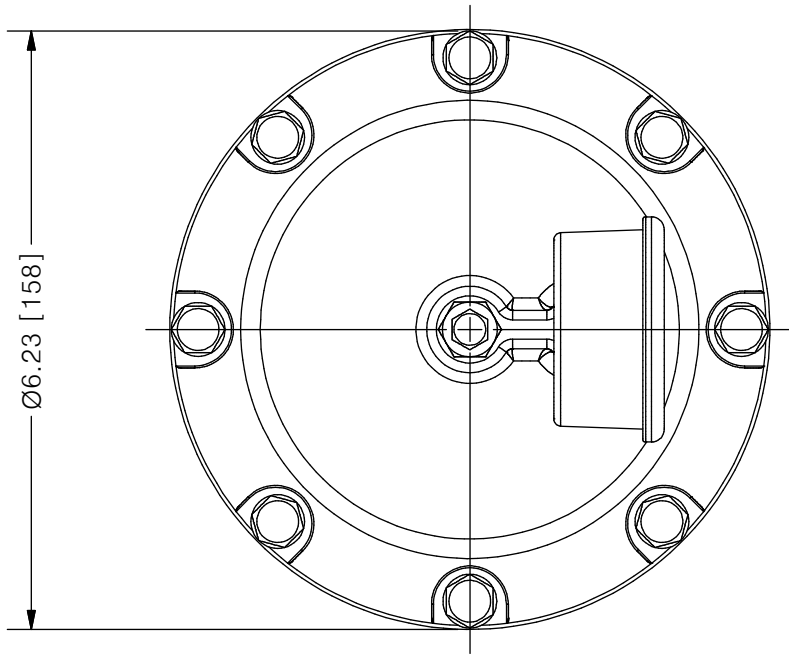
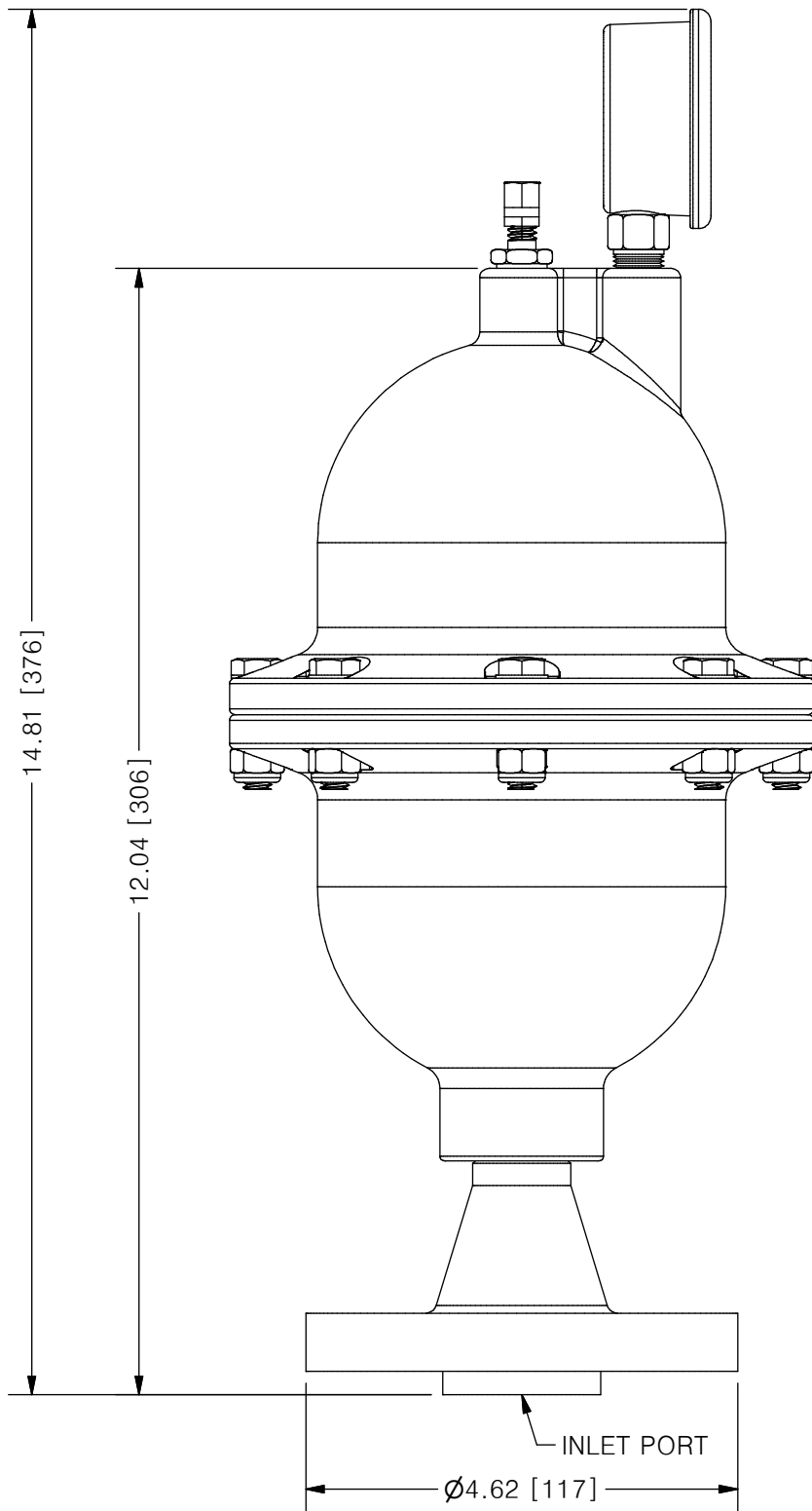


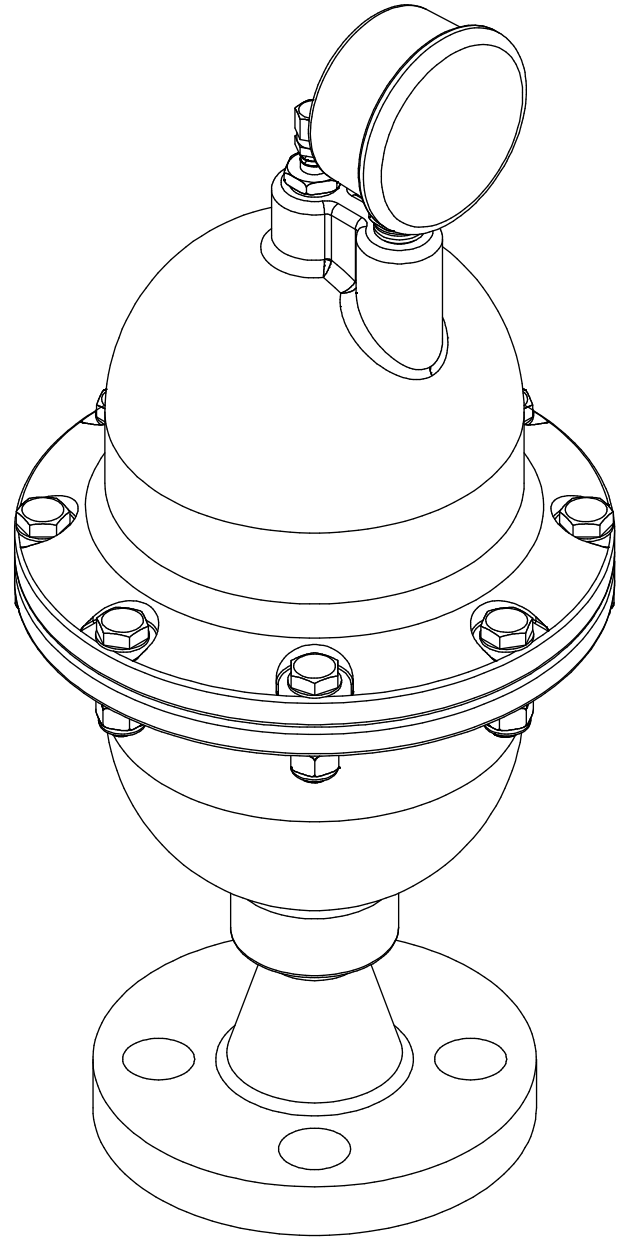
THIS DRAWING IS THE PROPERTY OF PRIMARY FLUID SYSTEMS INC. FROM WHICH A WRITTEN CONSENT FOR APPROVAL SHALL BE REQUIRED PRIOR TO COPYING.



Ø6.23 [158]



ACCU-PULSE®
APHII PULSATION DAMPENER



SCALE 1 : 2

AVAILABLE BLADDER/BELLOW	
EPDM	
VITON	
NEOPRENE	
BUNA-N	
HYPALON	
PTFE (MAX 600 PSIG)	

NO.	NAME	DESCRIPTION
1	MAX ALLOWABLE OPERATING PRESSURE	1000PSI @ 70°F (21°C)
2	UNIT CAPACITY	85 CU IN
3	INLET PORT	3/4" (OPTIONAL 1")
4	CONNECTION TYPE	ASTM #600 WN FLANGE
5	BOTTOM HOUSING (WETTED)	316 S/S / C276 / ALLOY 20
6	BLADDER (WETTED)	SEE CHART ABOVE
7	TOP HOUSING	316 S/S
8	GAUGE CASE/BACKING	STAINLESS STEEL AND BRASS
9	FILL VALVE	STAINLESS STEEL

PRIMARY FLUID SYSTEMS INC. 1050 COOKE BLVD., BURLINGTON, ONTARIO L7T 4A8	PROJECT: AP	SHT: 1 OF 1	DRAWN BY: NIKHIL G
	DATE DRAWN: 8/15/2016	SCALE: 1 : 2	UNITS: INCH[mm]
TITLE: ACCU-PULSE II PULSATION DAMPENER	MATERIAL: SEE CHART	REV# 1	
DWG NO.: APHII-ALLOY-WN_RI	DWG NAME: APHII	DWG TYPE: PLANAR VIEW 2D	DIMENSIONAL TOLERANCE 0.XX ± 0.25"
APPROVED BY:	CHECKED BY:	THIRD ANGLE PROJECTION	

11 X 17
SHEET
SIZE:
B