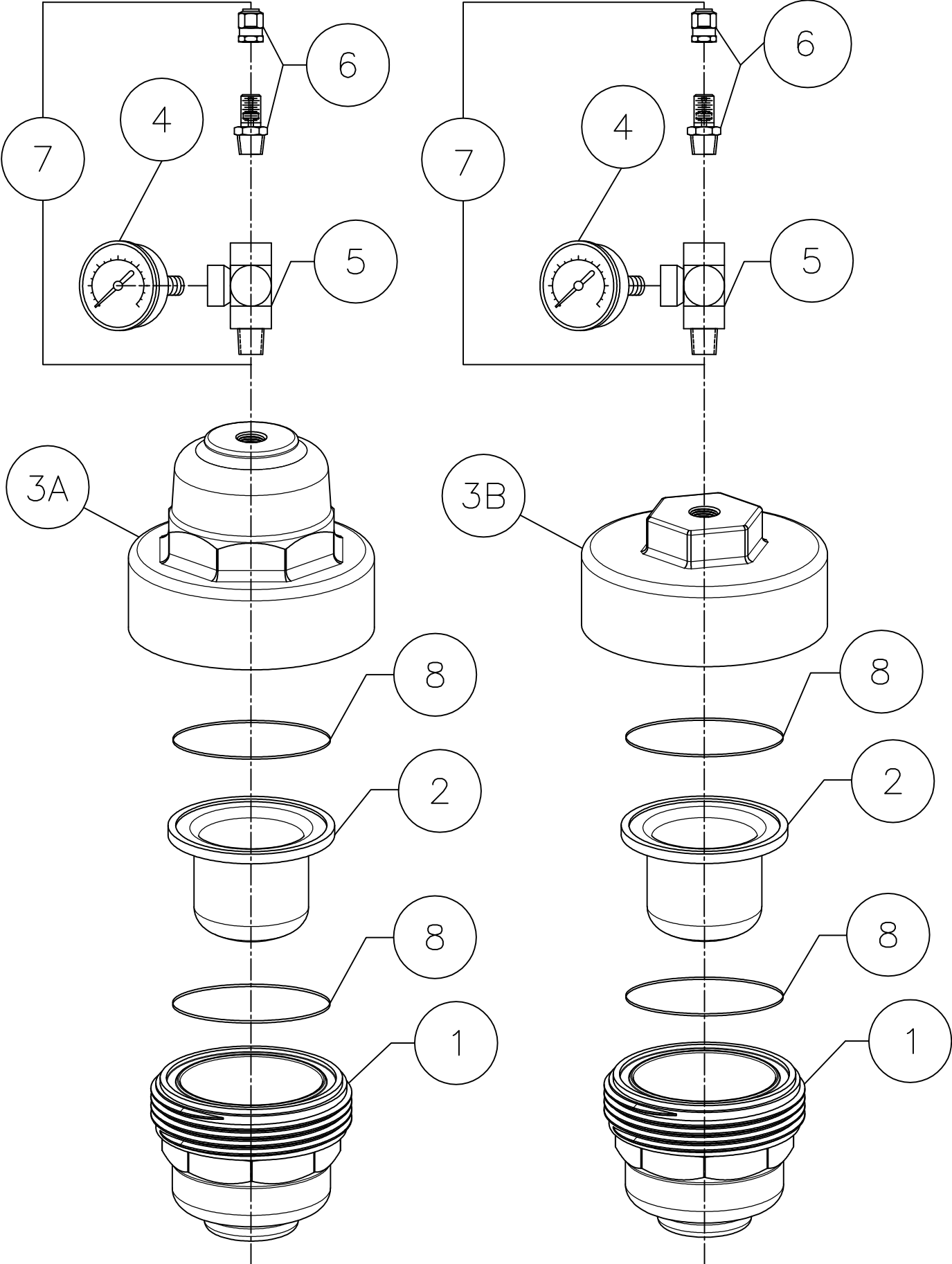


ITEM	MODEL	PART#	DESCRIPTION	MATERIAL
1	API/APIF	11X-^	WETTED HOUSING	PVC
		10X-^	WETTED HOUSING	CPVC
		10P-^	WETTED HOUSING	GF POLYPROPYLENE
		10K-^	WETTED HOUSING	PVDF
2	API/APIF	1000-25	BLADDER	NEOPRENE
		1000-28	BLADDER	EPDM
		1000-29	BLADDER	BUNA-N
		1000-30	BLADDER	HYPALON
		1000-31	BLADDER	VITON
		P1000-10*	BLADDER	PTFE
3A	API	11X-024	NONWETTED HOUSING	PVC
		10X-024	NONWETTED HOUSING	CPVC
		10P-024	NONWETTED HOUSING	GF POLYPROPYLENE
		10K-024	NONWETTED HOUSING	PVDF
3B	APIF	11X-033	NONWETTED HOUSING	PVC
		10X-033	NONWETTED HOUSING	CPVC
		10P-033	NONWETTED HOUSING	GF POLYPROPYLENE
		10K-033	NONWETTED HOUSING	PVDF
4	API/APIF	101-20	GAUGE	PLASTIC/BRASS
5	API/APIF	1000-46	TEE	STEEL
6	API/APIF	1000-70	FILL VALVE	BRASS
7	API/APIF	1000-58***	CHARGEABLE AIR ASSY	PLASTIC/BRASS/S/S
8	API/APIF	P1000-10-G**	O'RING ASSEMBLY	PTFE ENCAPSULATED VITON
^ ADD SUFFIX - 038 FOR UNITS WITH 3/8" CONNECTIONS ADD SUFFIX - 050 FOR UNITS WITH 1/2" CONNECTIONS * INCLUDES ITEM 8 ** ONLY USED WITH PTFE BLADDERS *** INCLUDES ITEM 4, 5, AND 6				
GF = GLASS FILLED				



DO NOT COPY WITHOUT PRIOR WRITTEN APPROVAL FROM PRIMARY FLUID SYSTEMS INC.				
<b>PRIMARY FLUID SYSTEMS INC.</b>				
1050 Cooke Blvd., Burlington, Ontario L7T 4A8				
API/APIF Series ACCUPULSE PULSATION DAMPENER EXPLODED POLY PARTS VIEW				
DATE ISSUED: 19-OCT-11	SCALE: NTS	SHEET: 1 OF 1		
PROJECT: ACCUPULSE	DRAWN BY: BRB			
APPROVED BY:	CHECKED BY:	DWG NO: AP-P-3850STD-104V-XPL	REV.#	4