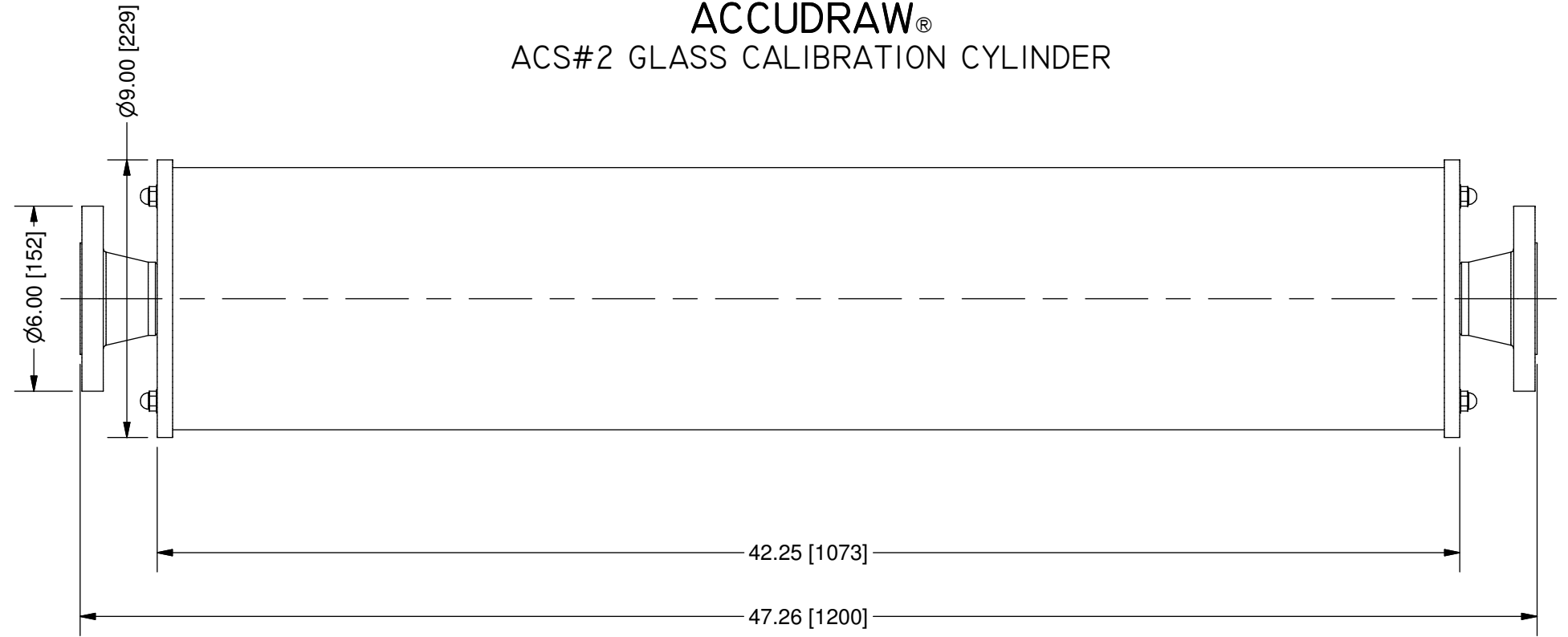
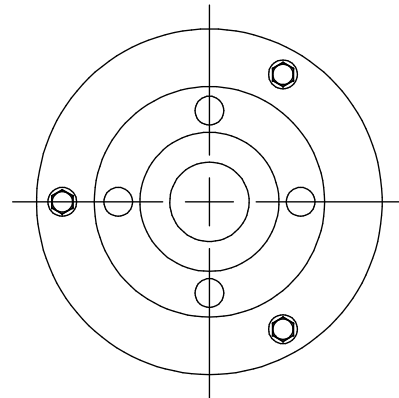
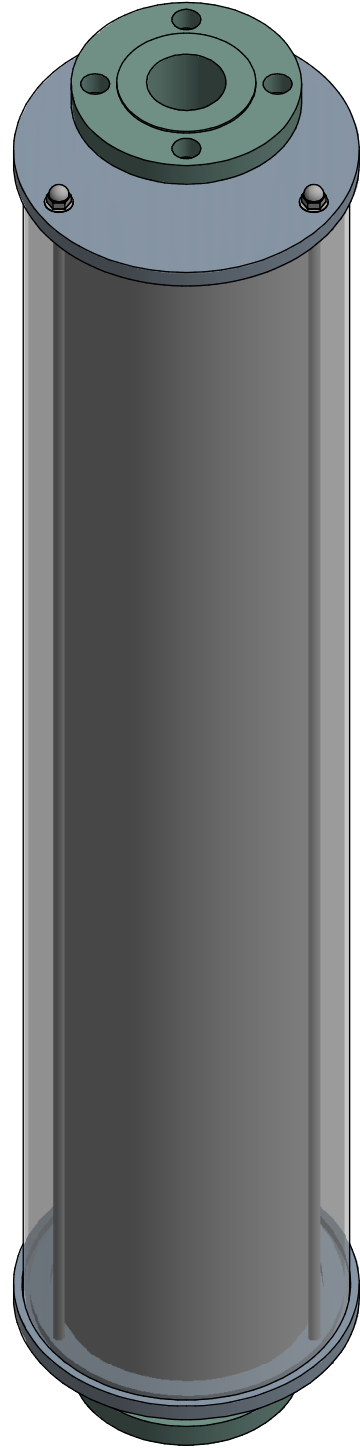


THIS DRAWING IS THE PROPERTY OF PRIMARY FLUID SYSTEMS INC. FROM WHICH A WRITTEN CONSENT FOR APPROVAL SHALL BE REQUIRED PRIOR TO COPYING.

	NO.	NAME	DESCRIPTION
	1	MAX ALLOWABLE OPERATING TEMPERATURE	140°F (60°C)
	2	MAX ALLOWABLE OPERATING PRESSURE	15 PSIG
	3	LEAK TEST	YES
CONNECTIONS	4	BOTTOM PORT CONNECTION	2"
	5	TOP PORT CONNECTION	2"
	6	TYPE	FLANGE ANSI B16.5
MATERIALS	7	CYLINDER	GLASS
	8	END CAPS	SS316L (OPTION ALLOY20, C276)
	9	FLANGE	SS316L (OPTION ALLOY20, C276)
	10	GLASS SEALING 'O' RINGS	VITON (OPTION EPDM, PTFE)
MATERIAL NON WETTED	11	OUTER SHIELD	POLYCARBONATE
	12	SHIELD SEALING 'O' RINGS	BUNA-N
INPUT DATA	13	VOLUME SIZE	20000 ML
SCALE	14	GRADUATION	200 ML
COMMENTS	15	ALL CYLINDERS ARE RATED FOR LIQUID SERVICE ONLY	
	16	CYLINDERS ARE NOT PRESSURE VESSELS	



ACCUDRAW®
ACS#2 GLASS CALIBRATION CYLINDER

SCALE 1:5

REV	DESCRIPTION	DATE	NAME
1	CAP/FLANGE MAT'L SS316L WAS SS316; MAT'L OPTIONS ADDED	6/25/2021	MK
REVISION HISTORY			

PRIMARY FLUID SYSTEMS INC. 1050 COOKE BLVD, BURLINGTON, ONTARIO L7T 4A8		PROJECT: ACS	SHT: 1 OF 1	DRAWN BY: NG
TITLE: 20000 ML CALIBRATION CYLINDER WITH 2" FLANGE CONNECTION		DATE DRAWN: 8/19/2016	SCALE: 1:5	UNITS: INCH [mm]
DWG NO: ACS#2-20000-GSV-F_R1		MATERIAL: SEE CHART	REV# 1	
DWG NAME: ACS CYLINDER DWG TYPE: PLANAR VIEW		APPROVED BY:	CHECKED BY:	DIMENSIONAL TOLERANCE 0.X = ± 0.25" 0.XX = ± 0.25" 0.XXX = ± 0.25"
				SHEET SIZE: B