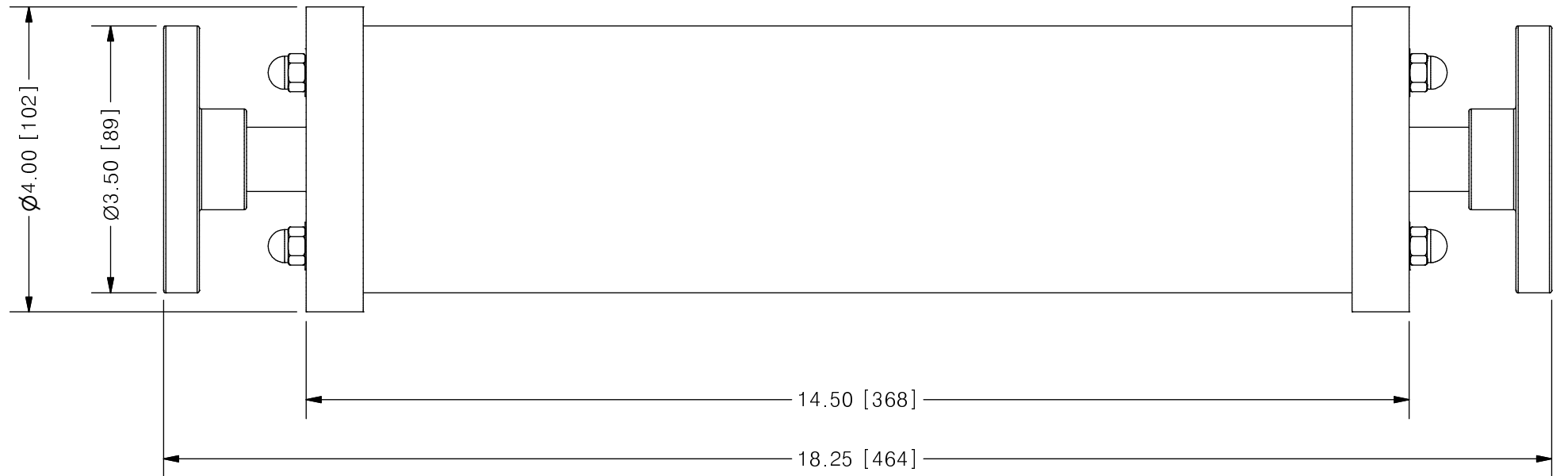
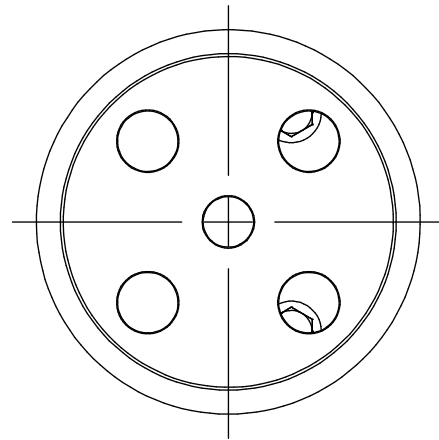
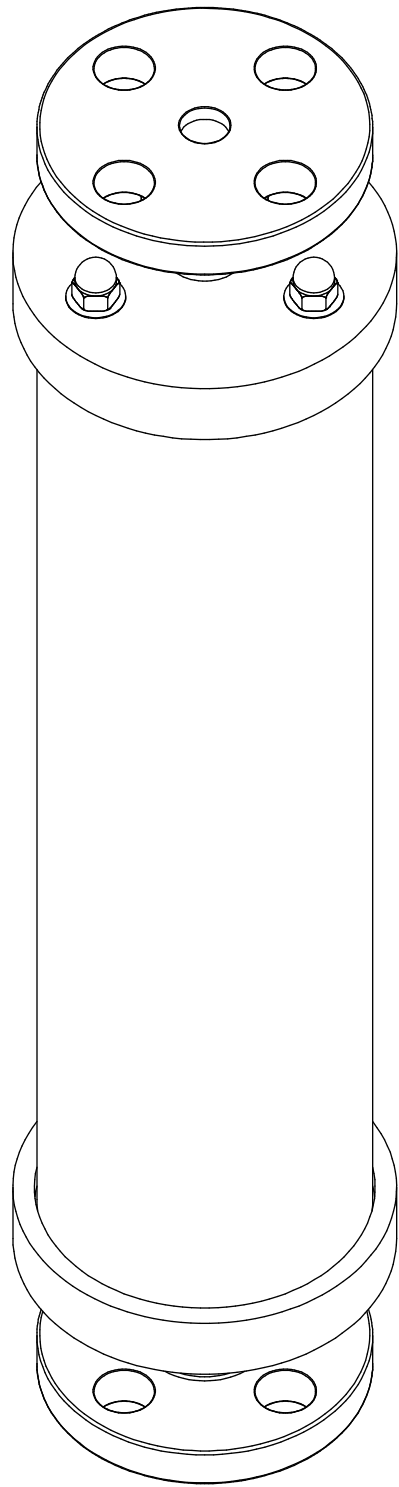


THIS DRAWING IS THE PROPERTY OF PRIMARY FLUID SYSTEMS INC. FROM WHICH A WRITTEN CONSENT FOR APPROVAL SHALL BE REQUIRED PRIOR TO COPYING.

| | NO. | NAME | DESCRIPTION |
|---------------------|-----|---|-------------------|
| | 1 | MAX ALLOWABLE OPERATING TEMPERATURE | 140°F (60°C) |
| | 2 | MAX ALLOWABLE OPERATING PRESSURE | 15 PSIG |
| | 3 | LEAK TEST | YES |
| CONNECTIONS | 4 | BOTTOM PORT CONNECTION | 1/2" |
| | 5 | TOP PORT CONNECTION | 1/2" |
| | 6 | TYPE | FLANGE ANSI B16.5 |
| MATERIALS | 7 | CYLINDER | GLASS |
| | 8 | END CAPS | CPVC |
| | 9 | GLASS SEALING 'O' RINGS | VITON |
| MATERIAL NON WETTED | 10 | OUTER SHIELD | POLYCARBONATE |
| | 11 | SHIELD SEALING 'O' RINGS | BUNA-N |
| INPUT DATA | 12 | VOLUME SIZE | 500 ML |
| SCALE | 13 | GRADUATION | 5 ML |
| COMMENTS | 14 | ALL CYLINDERS ARE RATED FOR LIQUID SERVICE ONLY | |
| | 15 | CYLINDERS ARE NOT PRESSURE VESSELS | |

ACCUDRAW®
ACS#2 GLASS CALIBRATION CYLINDER



SCALE 1 : 2

| REV | DESCRIPTION | DATE | NAME |
|-----|-------------|------|------|
| 0 | NEW DRAWING | -- | -- |

REVISION HISTORY

| | | | | |
|---|--|---|----------------------------|-------------------------|
| PRIMARY FLUID SYSTEMS INC. 1050 COOKE BLVD, BURLINGTON, ONTARIO L7T 4A8 | | PROJECT: ACS | SHT: 1 OF 1 | DRAWN BY: BRJB |
| TITLE: 500 ML CALIBRATION CYLINDER WITH 1/2" FLANGE CONNECTION | | DATE DRAWN: 6/13/2017 | SCALE: 1 : 2 | UNITS: INCH [mm] |
| DWG NAME: ACS CYLINDER DWG TYPE: PLANAR VIEW | | MATERIAL: SEE CHART | DWG NO: ACS#2-500-GCV-F_R0 | REV# 0 |
| APPROVED BY: _____ CHECKED BY: _____ | | DIMENSIONAL TOLERANCE 0.X = ± 0.25" 0.XX = ± 0.25" 0.XXX = ± 0.25" | | SHEET SIZE: B |

