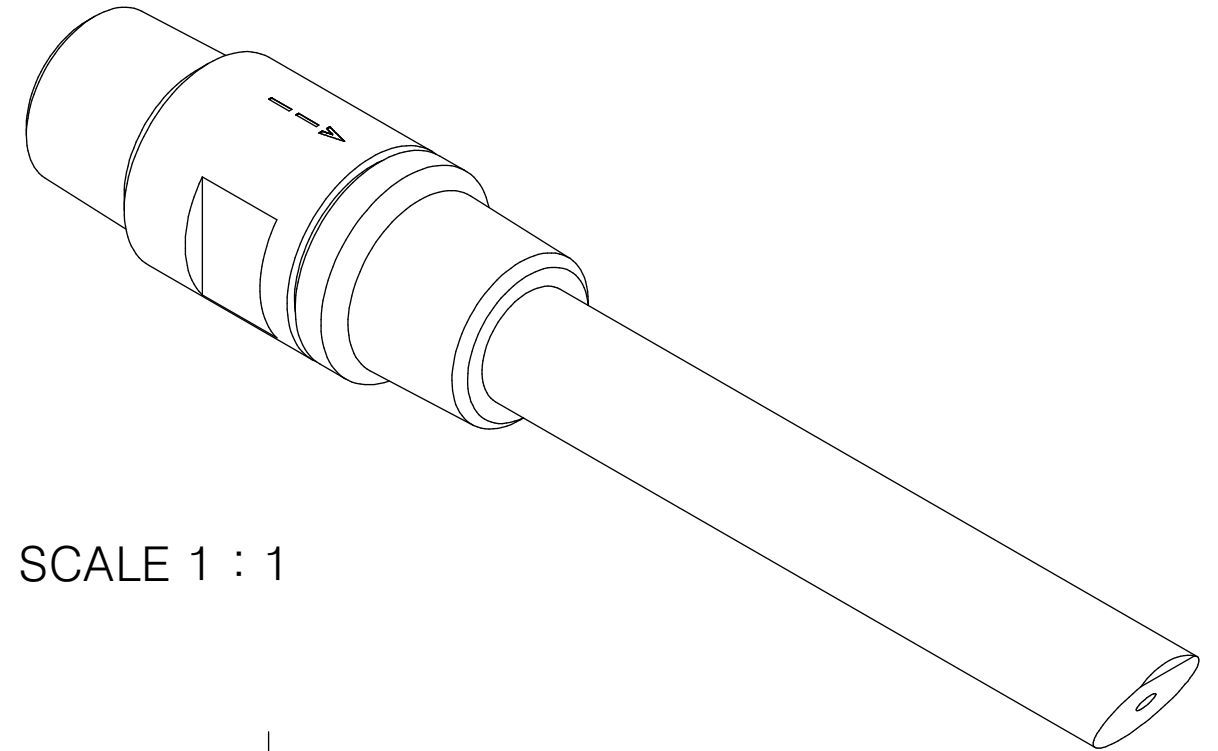
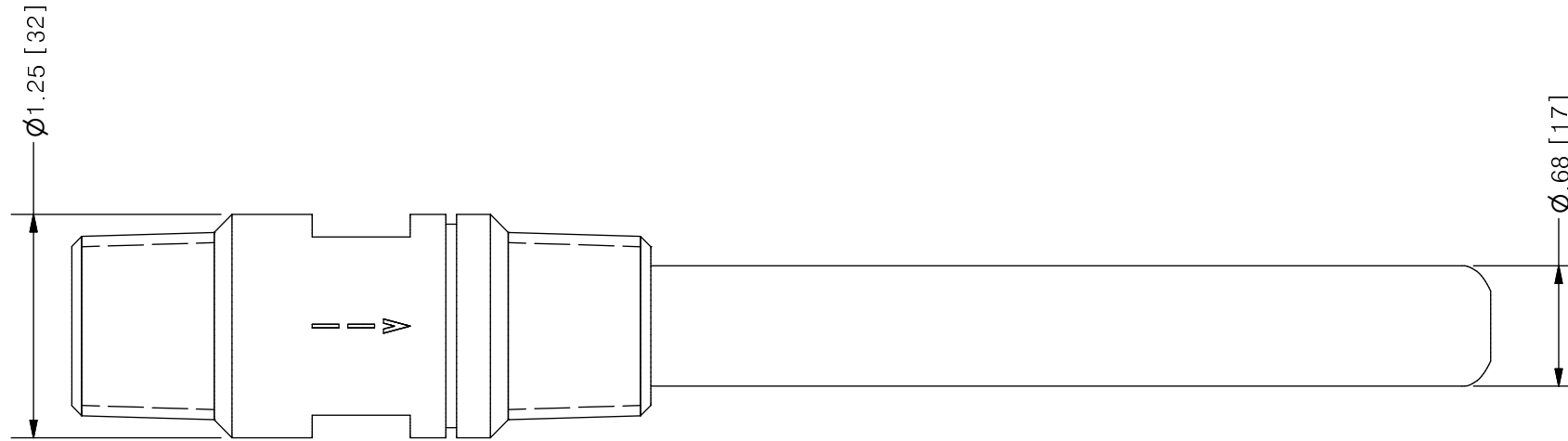


THIS DRAWING IS THE PROPERTY OF PRIMARY FLUID SYSTEMS INC. FROM WHICH A WRITTEN CONSENT FOR APPROVAL SHALL BE REQUIRED PRIOR TO COPYING.

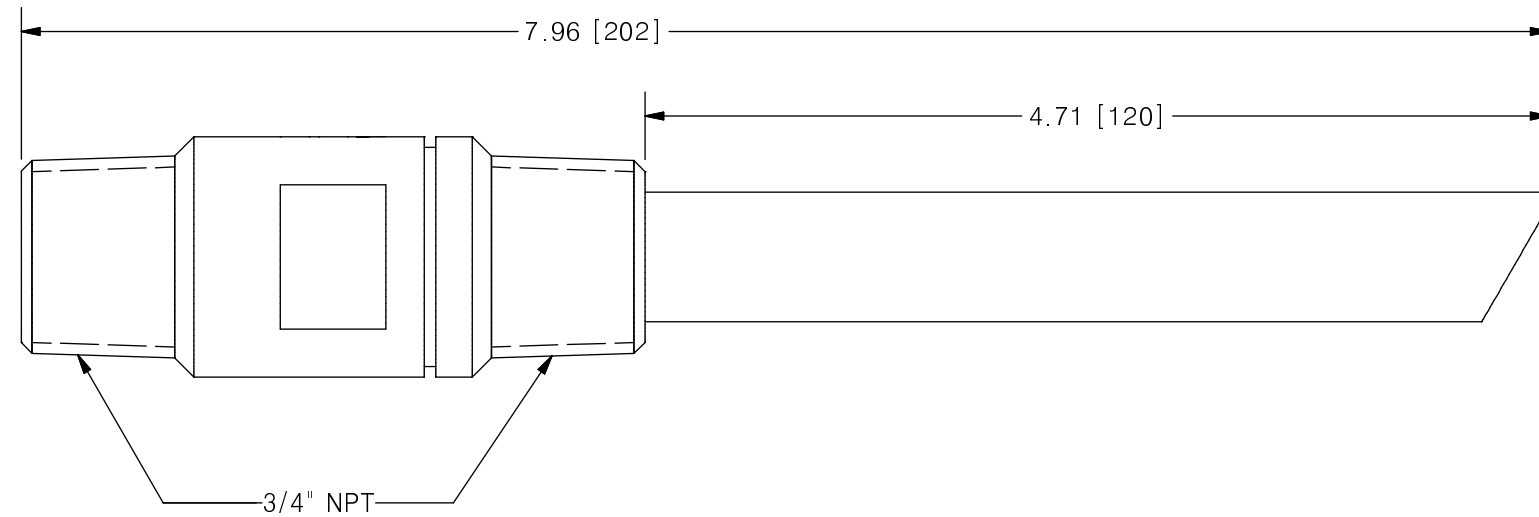
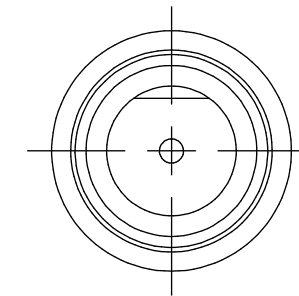
NO.	NAME	DESCRIPTION
1	MAX ALLOWABLE OPERATING TEMPERATURE	140°F (60°C)
2	MAX ALLOWABLE OPERATING PRESSURE	150 PSIG
CONNECTIONS		
3	INLET PORT CONNECTION	3/4"
4	OUTLET PORT CONNECTION	3/4"
5	TYPE	NPT
7	ORIFICE SIZE	1/8"
MATERIALS		
8	BODY, QUILL AND CHECK SEAT	PVC (CPVC, PP, PVDF OPTIONAL)
9	BALL CHECK	CERAMIC (HAST, PVDF, TFE OPTIONAL)
10	CHECK SPRING	316SS (HAST OPTIONAL)

INJECTION QUILLS®

MALE x MALE CONNECTION



SCALE 1 : 1



PRIMARY FLUID SYSTEMS INC. 1050 COOKE BLVD, BURLINGTON, ONTARIO L7T 4A8		PROJECT: IQ	SHT: 1 OF 1	DRAWN BY: TJ
TITLE: 3/4" INJECTION QUILL WITH 1/8" ORIFICE		DATE DRAWN: 2/7/2017	SCALE: 1 : 1	UNITS: INCH [mm]
DWG NO: IQ-78-PVC		MATERIAL: SEE CHART	REV# 0	
DWG NAME: INJECTION QUILL		APPROVED BY:	CHECKED BY:	DIMENSIONAL TOLERANCE 0.X = ± 0.25" 0.XX = ± 0.25" 0.XXX = ± 0.25"
DWG TYPE: PLANAR VIEW				

REV	DESCRIPTION	DATE	NAME
0	NEW DRAWING	--	--

REVISION HISTORY