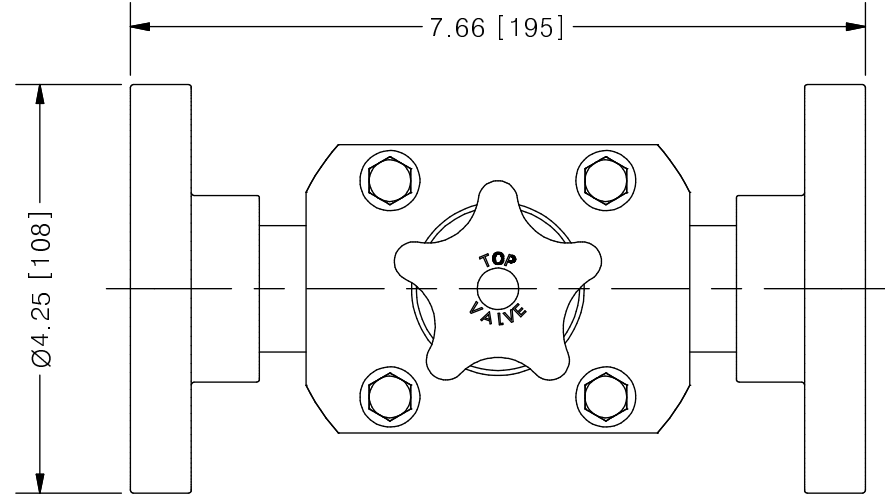
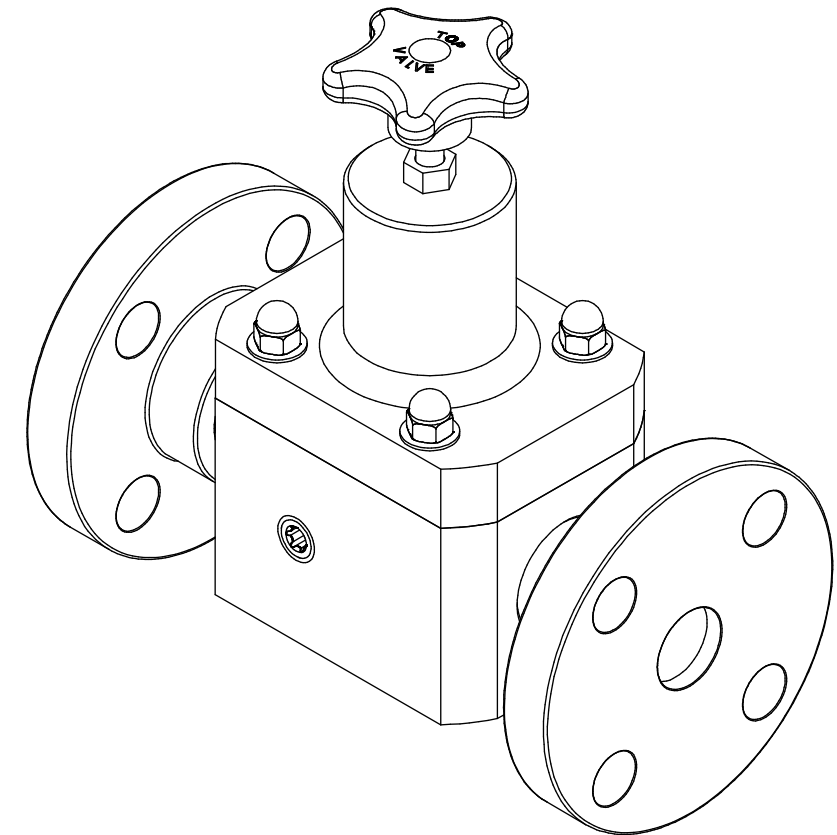
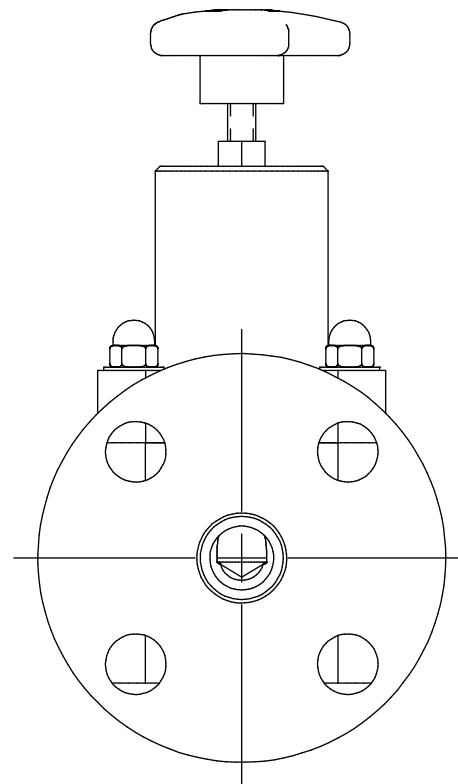
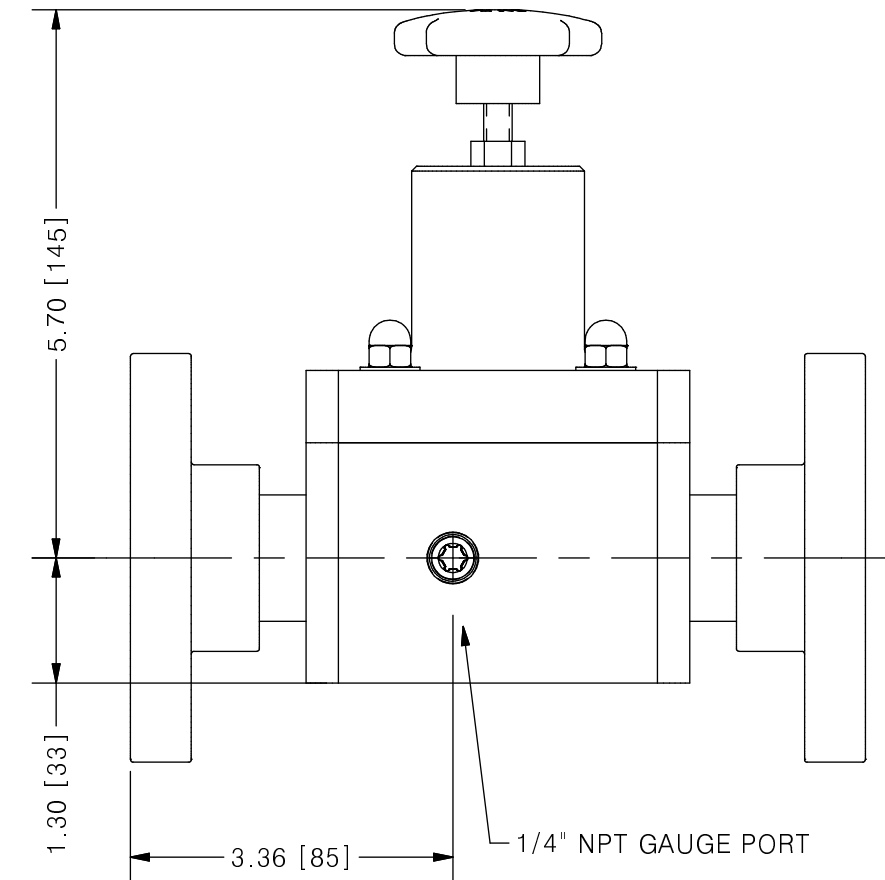


THIS DRAWING IS THE PROPERTY OF PRIMARY FLUID SYSTEMS INC. FROM WHICH A WRITTEN CONSENT FOR APPROVAL SHALL BE REQUIRED PRIOR TO COPYING.



TOP VALVE® TVB BACK PRESSURE VALVE



	NO.	NAME	DESCRIPTION
	1	MAX ALLOWABLE OPERATING TEMPERATURE	140°F (60°C)
	2	MAX ALLOWABLE OPERATING PRESSURE	150 PSIG @ 70°F
CONNECTIONS	3	SIZE: INLET/OUTLET	1"
	4	CONNECTION TYPE	ANSI B16.5 FLANGE
MATERIALS (WETTED)	5	BODY	PVC
	6	DIAPHRAGM	VITON/EPDM/PTFE
	7	FLANGE	PVC
MATERIALS (NON-WETTED)	8	SPRING BONNET/TOP	CPVC
	9	SPRING	NICKEL PLATED MUSIC WIRE ASTM A228
	10	TOP/BOTTOM DISC	POLYPROPYLENE
	11	BOLTS, NUTS, WASHERS	STAINLESS STEEL
	12	FACTORY SET PRESSURE	50 PSIG
	13	SPRING RANGE	7-150 PSIG

SCALE 1 : 2

REV	DESCRIPTION	DATE	NAME
0	NEW DRAWING	--	--

REVISION HISTORY

PRIMARY FLUID SYSTEMS INC. 1050 COOKE BLVD, BURLINGTON, ONTARIO L7T 4A8		PROJECT: TVB	SHT: 1 OF 1	DRAWN BY: BRJB
TITLE: 1" BACK PRESSURE TOP VALVE WITH 1" 150# SW FLANGE CONNECTIONS PLUS GAUGE PORT		DATE DRAWN: 6/2/2017	SCALE: 1 : 2	UNITS: INCH [mm]
DWG NO: TVBF10-PVC-G_R0		MATERIAL: SEE CHART	REV# 0	
DWG NAME: TOP VALVE DWG TYPE: PLANAR VIEW		APPROVED BY:	CHECKED BY:	DIMENSIONAL TOLERANCE 0.XX = ± 0.25" 0.XXX = ± 0.25" 0.XXXX = ± 0.25"
THIRD ANGLE PROJECTION				SHEET SIZE: B