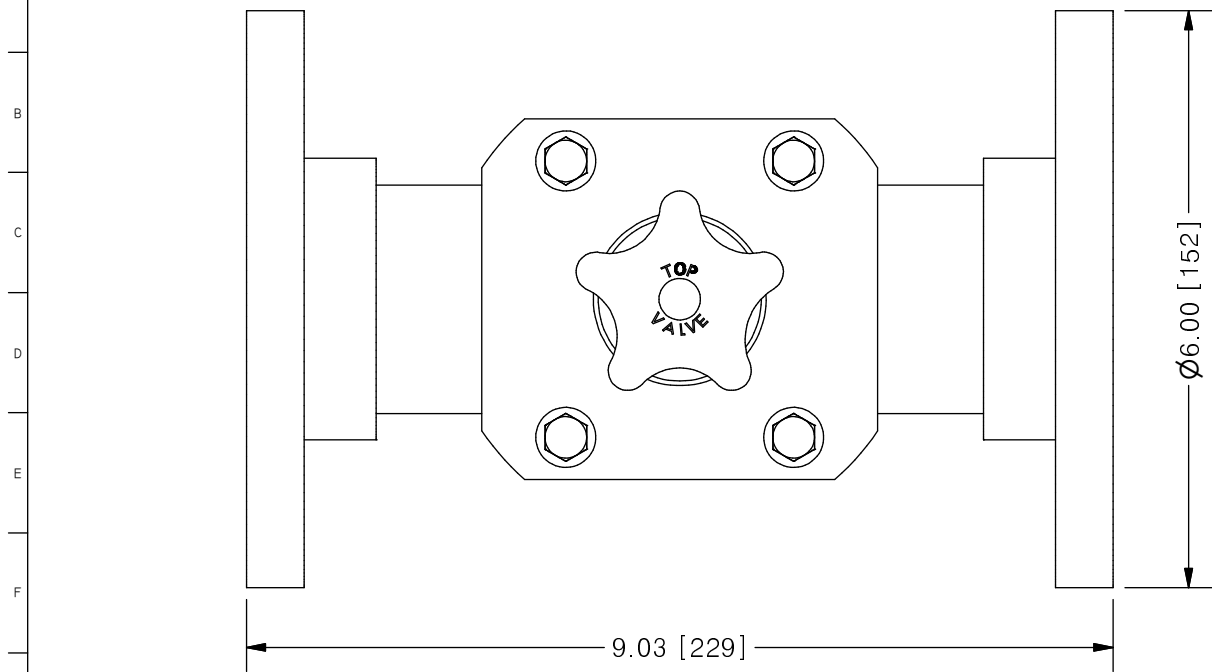
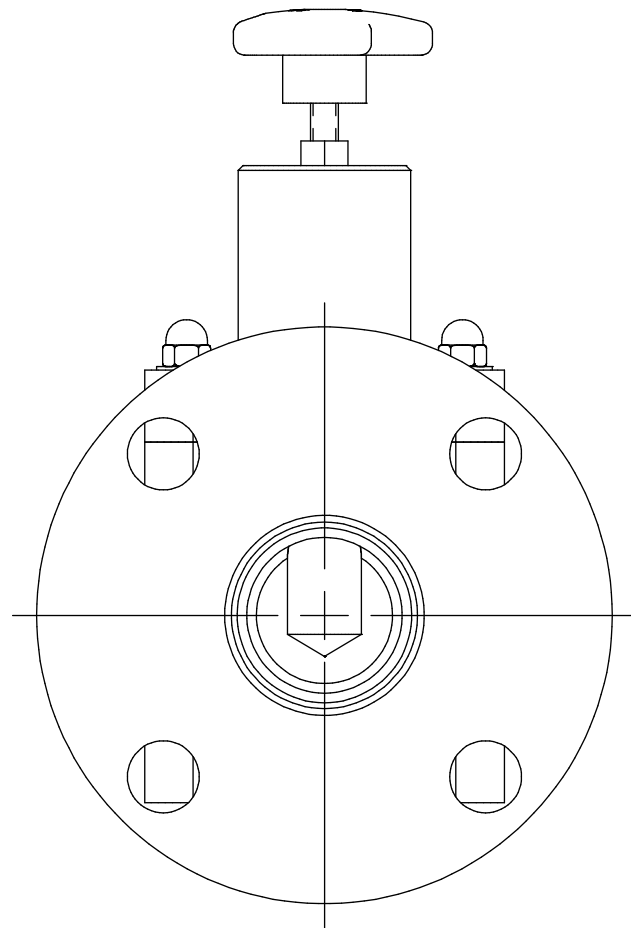
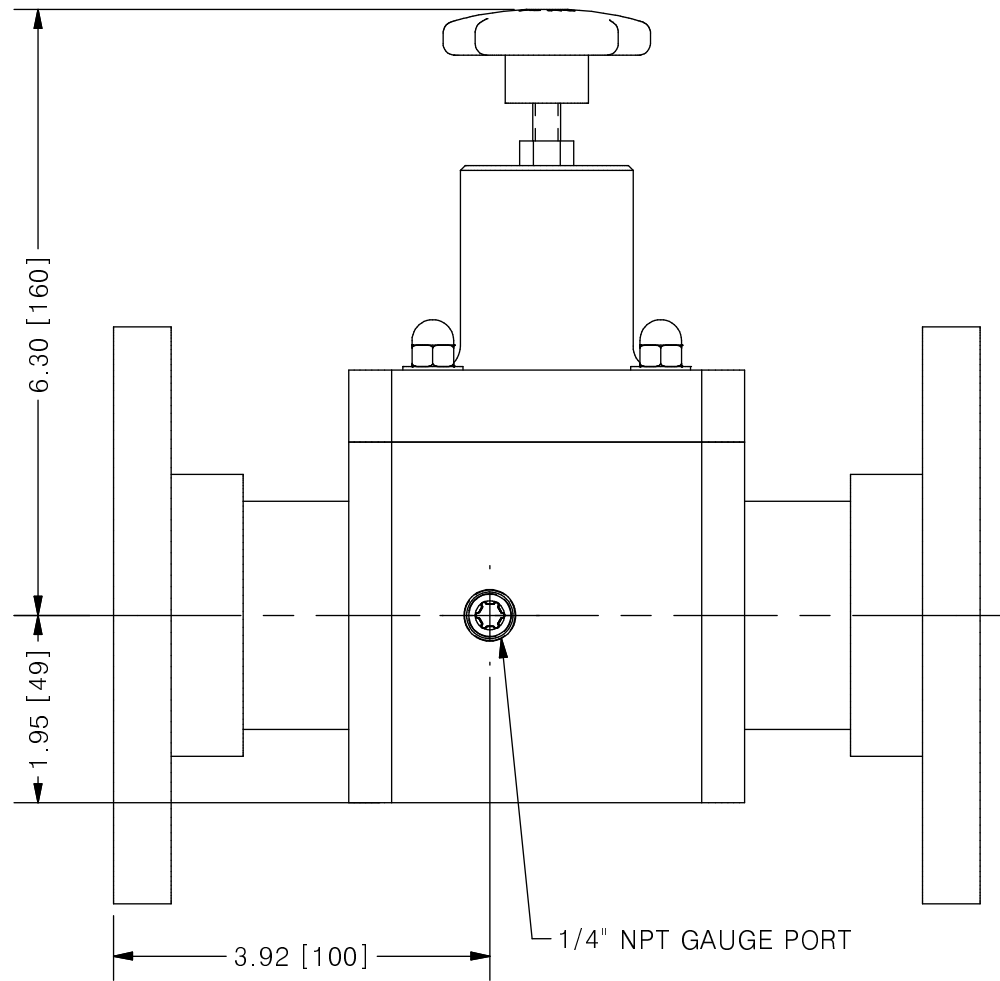
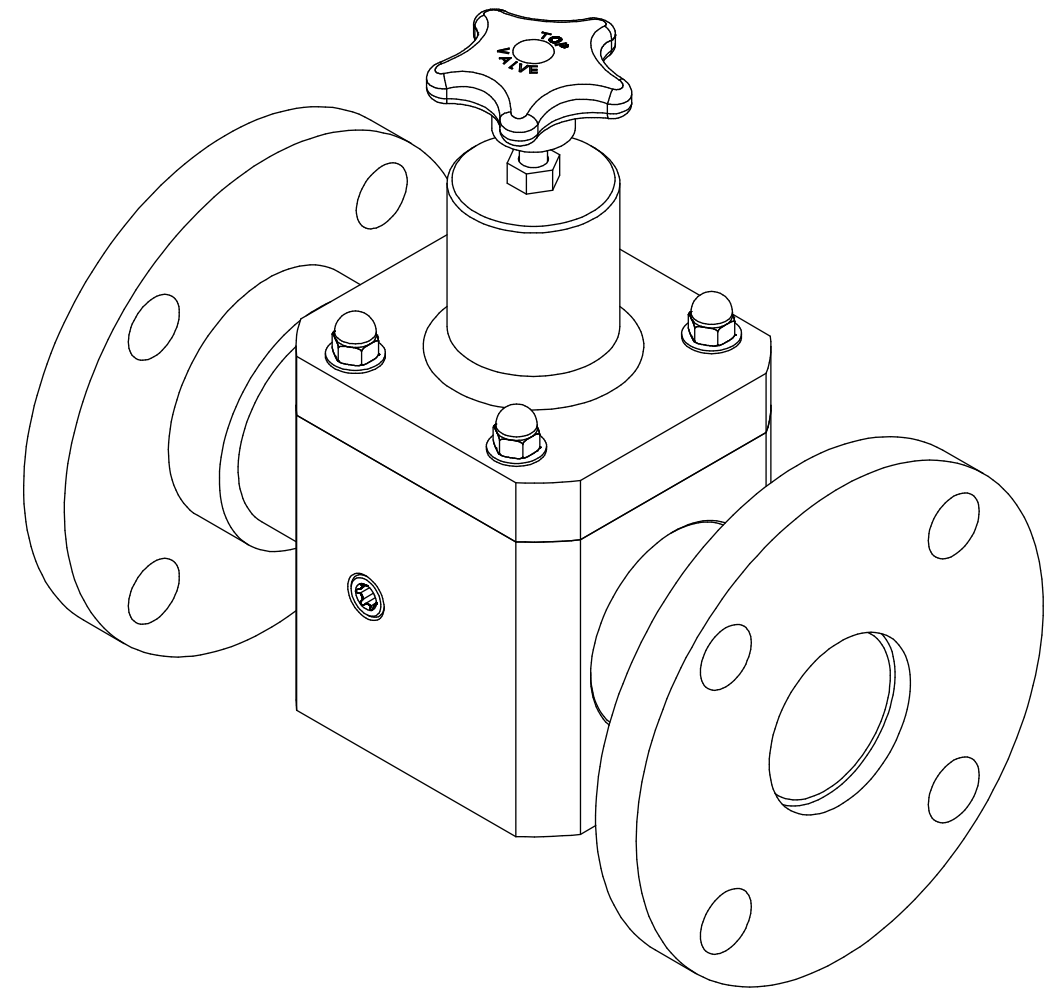


THIS DRAWING IS THE PROPERTY OF PRIMARY FLUID SYSTEMS INC. FROM WHICH A WRITTEN CONSENT FOR APPROVAL SHALL BE REQUIRED PRIOR TO COPYING.

NO.	NAME	DESCRIPTION
1	MAX ALLOWABLE OPERATING TEMPERATURE	140°F (60°C)
2	MAX ALLOWABLE OPERATING PRESSURE	150 PSIG @ 70°F
CONNECTIONS		
3	SIZE: INLET/OUTLET	2"
4	CONNECTION TYPE	ANSI FUSION WELD FLANGE
MATERIALS (WETTED)		
5	BODY	PP/PVDF
6	DIAPHRAGM	PTFE BACKED EPDM
MATERIALS (NON-WETTED)		
7	FLANGE	PP/PVDF
8	SPRING BONNET/TOP	PVC
9	SPRING	NICKEL PLATED MUSIC WIRE ASTM A228
10	TOP/BOTTOM DISC	POLYPROPYLENE
11	BOLTS, NUTS, WASHERS	STAINLESS STEEL
12	FACTORY SET PRESSURE	50 PSIG
13	SPRING RANGE	7-150 PSIG



TOP VALVE® TVB BACK PRESSURE VALVE



SCALE 1 : 2

REV	DESCRIPTION	DATE	NAME
0	NEW DRAWING	--	--

PRIMARY FLUID SYSTEMS INC. 1050 COOKE BLVD, BURLINGTON, ONTARIO L7T 4A8		PROJECT: TVB	SHT: 1 OF 1	DRAWN BY: NG					
TITLE: 2" BACK PRESSURE TOP VALVE WITH 2" 150# FW FLANGE CONNECTIONS PLUS GAUGE PORT		DATE DRAWN: 7/8/2016	SCALE: 1 : 2	UNITS: INCH [mm]					
DWG NO: TVBF20-PP-G_R0	MATERIAL: SEE CHART	APPROVED BY:		CHECKED BY:					
DWG NAME: TOP VALVE	DWG TYPE: PLANAR VIEW	THIRD ANGLE PROJECTION		REVISION HISTORY					
				<table border="1"> <tr> <td>0</td> <td>REV</td> <td>DESCRIPTION</td> <td>DATE</td> <td>NAME</td> </tr> </table>	0	REV	DESCRIPTION	DATE	NAME
0	REV	DESCRIPTION	DATE	NAME					

DIMENSIONAL TOLERANCE
0.XX = ± 0.25"
0.XXX = ± 0.25"
0.XXX = ± 0.25"

REV# 0
SHEET SIZE: B