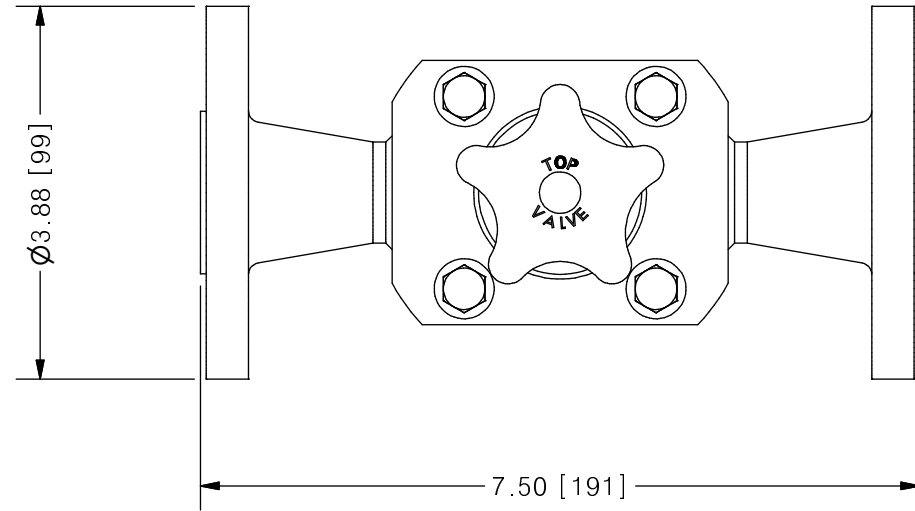
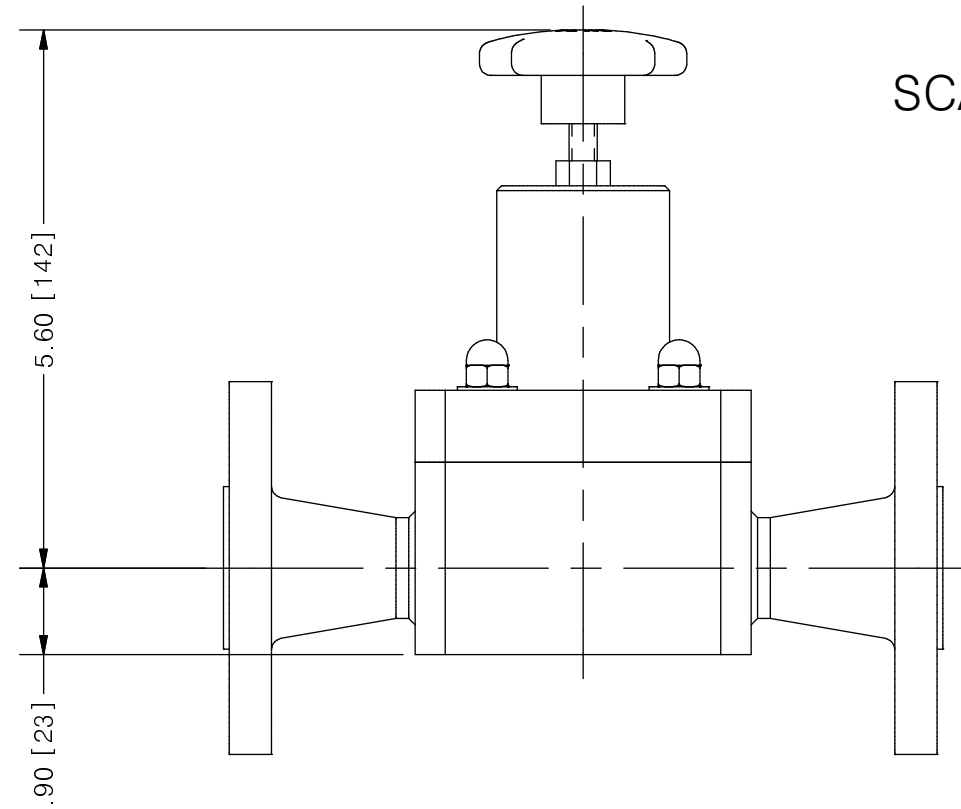


THIS DRAWING IS THE PROPERTY OF PRIMARY FLUID SYSTEMS INC. FROM WHICH A WRITTEN CONSENT FOR APPROVAL SHALL BE REQUIRED PRIOR TO COPYING.

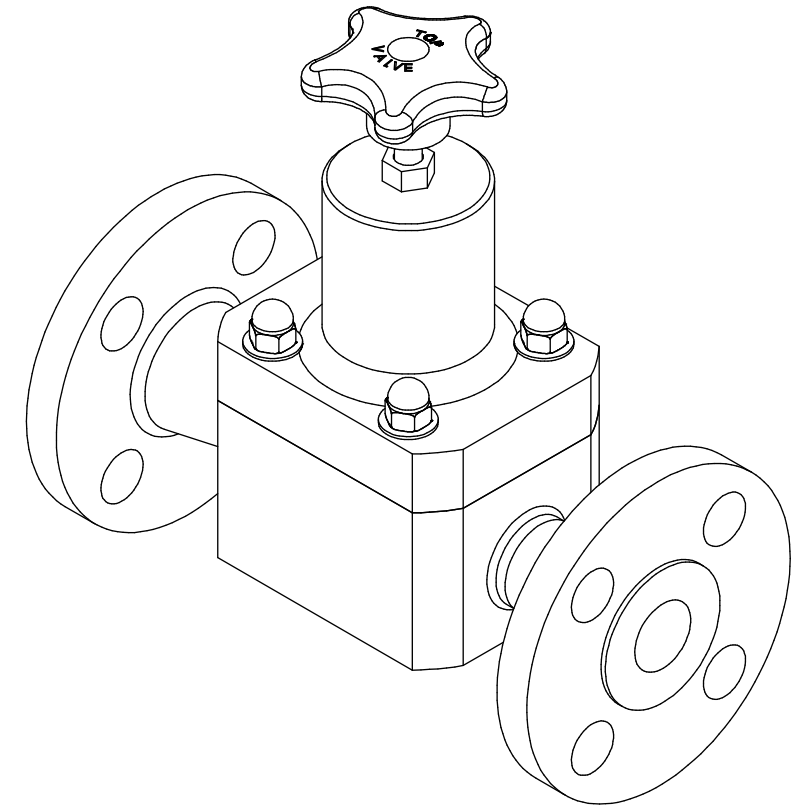
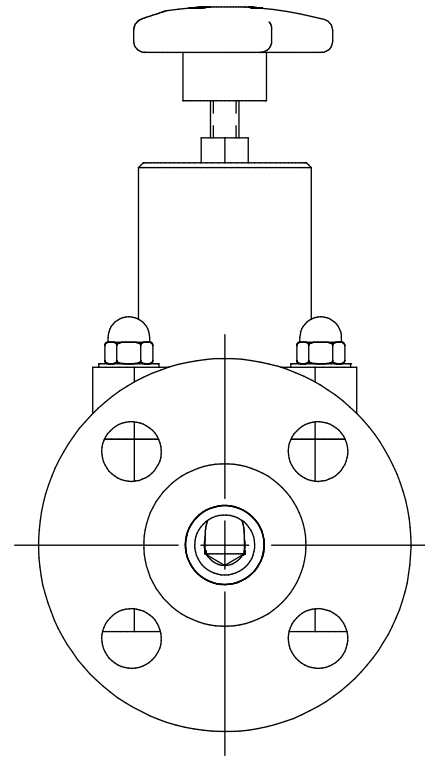
NO.	NAME	DESCRIPTION
1	MAX ALLOWABLE OPERATING TEMPERATURE	180°F (82°C)
2	MAX ALLOWABLE OPERATING PRESSURE	150 PSIG @ 70°F
CONNECTIONS		
3	SIZE: INLET/OUTLET	3/4"
4	CONNECTION TYPE	ANSI WN FLANGE B16.5
MATERIALS (WETTED)		
5	BODY	316 SS
6	DIAPHRAGM	PTFE BACKED EPDM
7	FLANGE	316 SS
MATERIALS (NON-WETTED)		
8	SPRING BONNET/TOP	CPVC
9	SPRING	NICKEL PLATED MUSIC WIRE ASTM A228
10	TOP/BOTTOM DISC	POLYPROPYLENE
11	BOLTS, NUTS, WASHERS	STAINLESS STEEL
12	FACTORY SET PRESSURE	50 PSIG
13	SPRING RANGE	7-150 PSIG



**TOP VALVE®**  
TVB BACK PRESSURE VALVE



SCALE 1 : 2



<b>PRIMARY FLUID SYSTEMS INC.</b> 1050 COOKE BLVD, BURLINGTON, ONTARIO L7T 4A8		PROJECT: TVB	SHT: 1 OF 1	DRAWN BY: NG								
TITLE: 3/4" BACK PRESSURE TOP VALVE WITH 3/4" 150# WN FLANGE CONNECTIONS		DATE DRAWN: 7/4/2016	SCALE: 1 : 2	UNITS: INCH [mm]								
DWG NAME: TOP VALVE		MATERIAL: SEE CHART	DWG NO: TVBFW75-SS_R0	REV# 0								
DWG TYPE: PLANAR VIEW		APPROVED BY:	CHECKED BY:	DIMENSIONAL TOLERANCE 0.XX = ± 0.25" 0.XXX = ± 0.25" 0.XXX = ± 0.25"								
<table border="1"> <thead> <tr> <th>REV</th> <th>DESCRIPTION</th> <th>DATE</th> <th>NAME</th> </tr> </thead> <tbody> <tr> <td>0</td> <td>NEW DRAWING</td> <td>--</td> <td>--</td> </tr> </tbody> </table>		REV	DESCRIPTION	DATE	NAME	0	NEW DRAWING	--	--			SHEET SIZE: <b>B</b>
REV	DESCRIPTION	DATE	NAME									
0	NEW DRAWING	--	--									