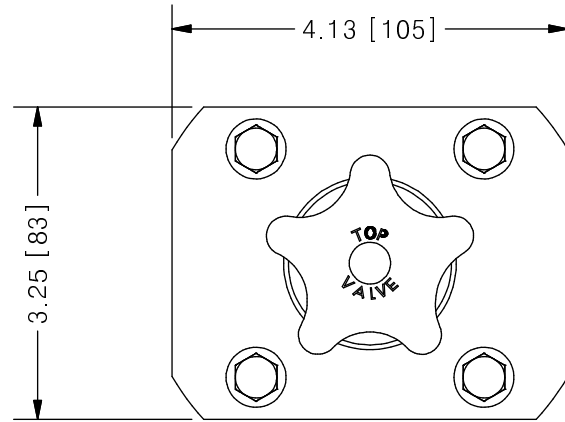
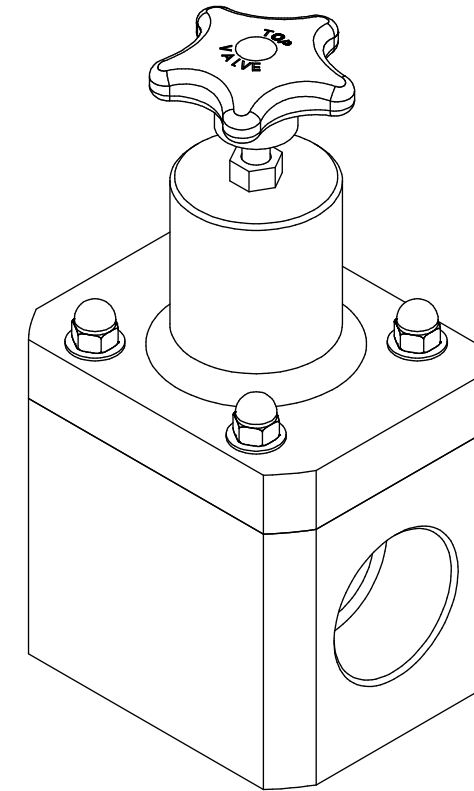
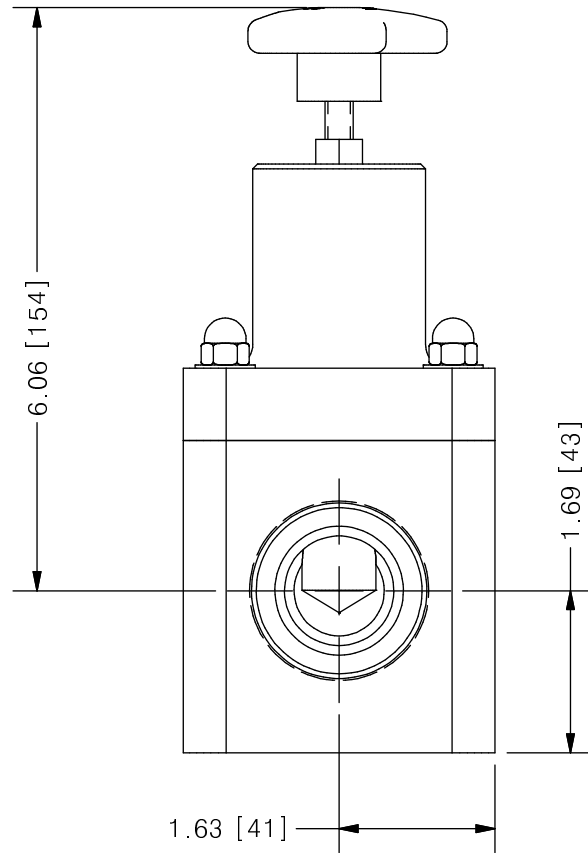
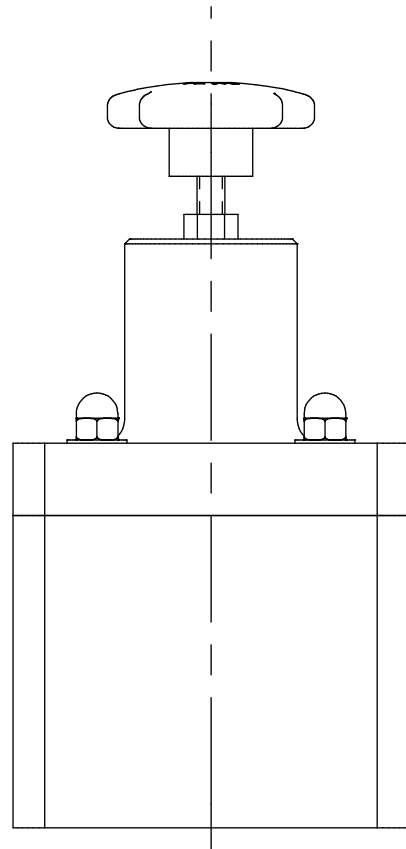


THIS DRAWING IS THE PROPERTY OF PRIMARY FLUID SYSTEMS INC. FROM WHICH A WRITTEN CONSENT FOR APPROVAL SHALL BE REQUIRED PRIOR TO COPYING.



**TOP VALVE®**  
TVB BACK PRESSURE VALVE



SCALE 1 : 2

| NO.                    | NAME                                | DESCRIPTION                        |
|------------------------|-------------------------------------|------------------------------------|
| 1                      | MAX ALLOWABLE OPERATING TEMPERATURE | 140°F (60°C)                       |
| 2                      | MAX ALLOWABLE OPERATING PRESSURE    | 150 PSIG                           |
| CONNECTIONS            |                                     |                                    |
| 3                      | SIZE: INLET/OUTLET                  | 1-1/2"                             |
| 4                      | CONNECTION TYPE                     | NPT                                |
| MATERIALS (WETTED)     |                                     |                                    |
| 5                      | BODY                                | PVC                                |
| 6                      | DIAPHRAGM                           | PTFE BACKED EPDM                   |
| MATERIALS (NON-WETTED) |                                     |                                    |
| 7                      | SPRING BONNET/TOP                   | PVC                                |
| 8                      | SPRING                              | NICKEL PLATED MUSIC WIRE ASTM A228 |
| 9                      | TOP/BOTTOM DISC                     | POLYPROPYLENE                      |
| 10                     | BOLTS, NUTS, WASHERS                | STAINLESS STEEL                    |
| 11                     | FACTORY SET PRESSURE                | 50 PSIG                            |
| 12                     | SPRING RANGE                        | 7-150 PSIG                         |

| REV | DESCRIPTION | DATE | NAME |
|-----|-------------|------|------|
| 0   | NEW DRAWING | --   | --   |

REVISION HISTORY

|   |  |                      |                       |   |
|---|--|----------------------|-----------------------|---|
| <b>PRIMARY FLUID SYSTEMS INC.</b><br>1050 COOKE BLVD, BURLINGTON, ONTARIO L7T 4A8 |  | PROJECT: TVB         | SHT: 1 OF 1           | DRAWN BY: NG  |
| TITLE: 1-1/2" BACK PRESSURE TOP VALVE WITH 1-1/2" NPT CONNECTIONS                 |  | DATE DRAWN: 7/6/2016 | SCALE: 1 : 2          | UNITS: INCH [mm]  |
| DWG NAME: TOP VALVE   |  | MATERIAL: SEE CHART  | DWG NO: TVBP15-PVC_R0 | REV# 0  |
| DWG TYPE: PLANAR VIEW   |  | APPROVED BY:         | CHECKED BY:           | DIMENSIONAL TOLERANCE<br>0.XX = ± 0.25"<br>0.XXX = ± 0.25"<br>0.XXX = ± 0.25" |
|   |  |                      |                       | SHEET SIZE:<br><b>B</b>   |