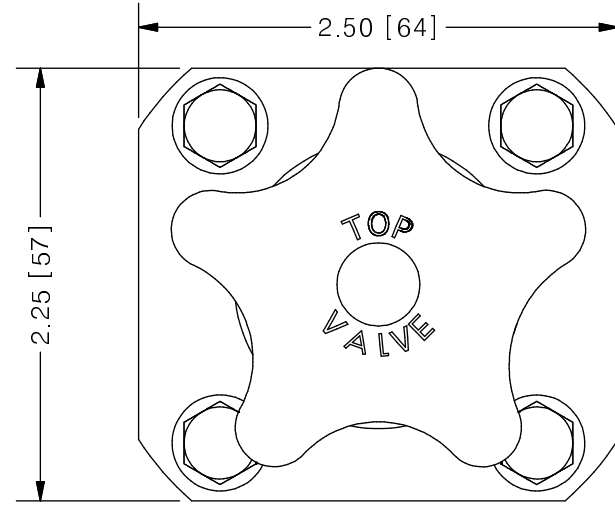
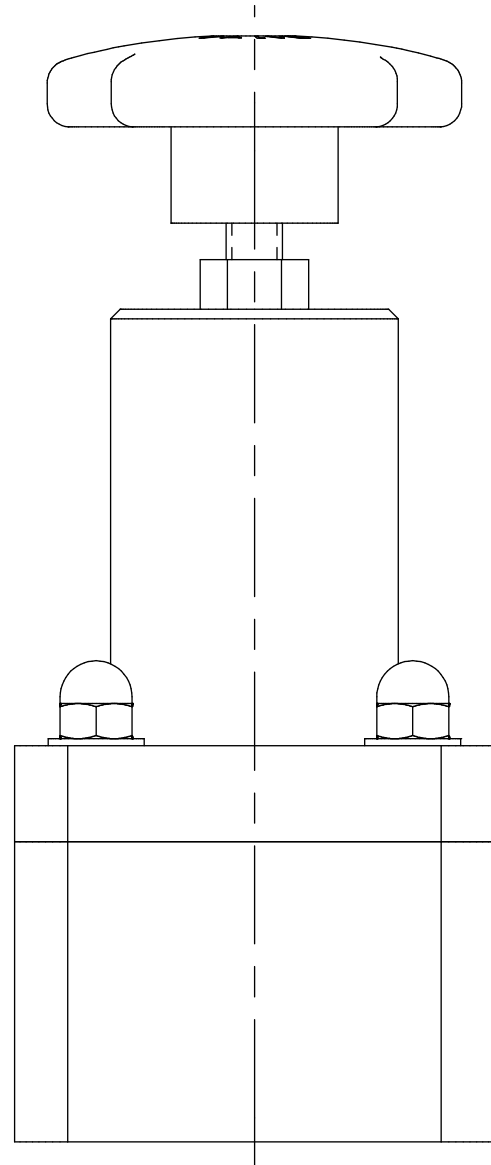


THIS DRAWING IS THE PROPERTY OF PRIMARY FLUID SYSTEMS INC. FROM WHICH A WRITTEN CONSENT FOR APPROVAL SHALL BE REQUIRED PRIOR TO COPYING.

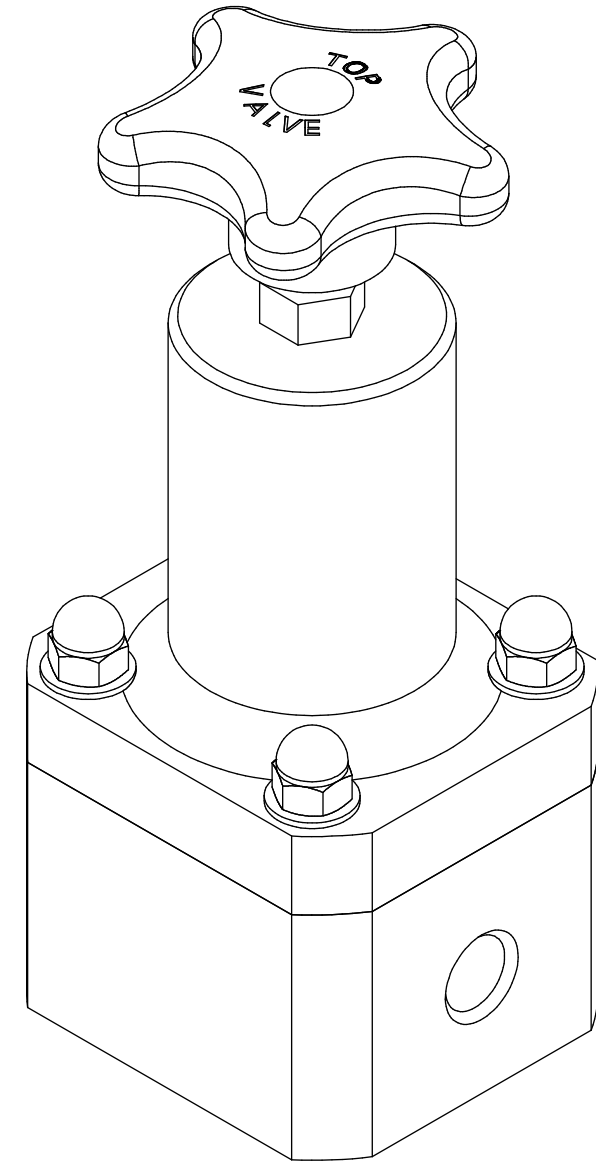
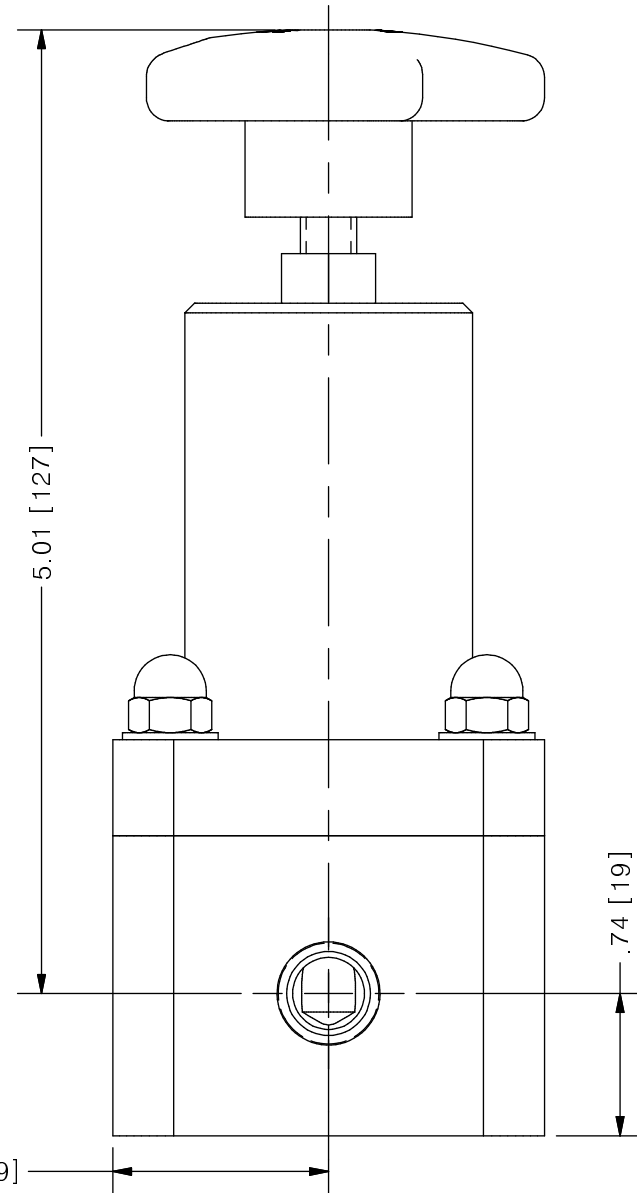
NO.	NAME	DESCRIPTION
1	MAX ALLOWABLE OPERATING TEMPERATURE	180°F (82°C)
2	MAX ALLOWABLE OPERATING PRESSURE	150 PSIG @ 70°F
CONNECTIONS	3	SIZE: INLET/OUTLET
	4	CONNECTION TYPE
MATERIALS (WETTED)	5	BODY
	6	DIAPHRAGM
MATERIALS (NON-WETTED)	7	SPRING BONNET/TOP
	8	SPRING
	9	TOP/BOTTOM DISC
	10	BOLTS, NUTS, WASHERS
	11	FACTORY SET PRESSURE
	12	SPRING RANGE



TOP VALVE® TVB BACK PRESSURE VALVE



SCALE 1 : 1



REV	DESCRIPTION	DATE	NAME
0	NEW DRAWING	--	--

PRIMARY FLUID SYSTEMS INC. 1050 COOKE BLVD, BURLINGTON, ONTARIO L7T 4A8		PROJECT: TVB	SHT: 1 OF 1	DRAWN BY: NG
TITLE: 1/4" BACK PRESSURE TOP VALVE WITH 1/4" NPT CONNECTIONS		DATE DRAWN: 7/5/2016	SCALE: 1 : 1	UNITS: INCH [mm]
DWG NAME: TOP VALVE		MATERIAL: SEE CHART	DWG NO: TVBP25-SS_R0	REV# 0
DWG TYPE: PLANAR VIEW		APPROVED BY:	CHECKED BY:	DIMENSIONAL TOLERANCE 0.XX = ± 0.25" 0.XXX = ± 0.25" 0.XXX = ± 0.25"



11 X 17
SHEET
SIZE:
B