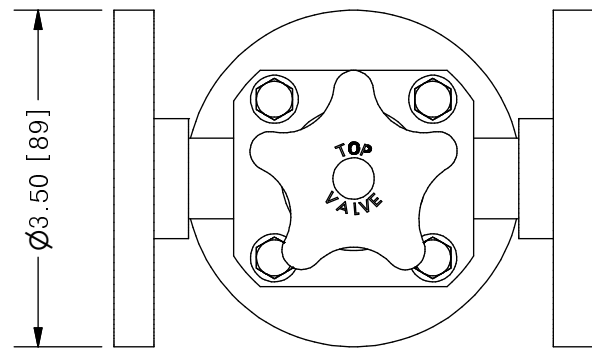
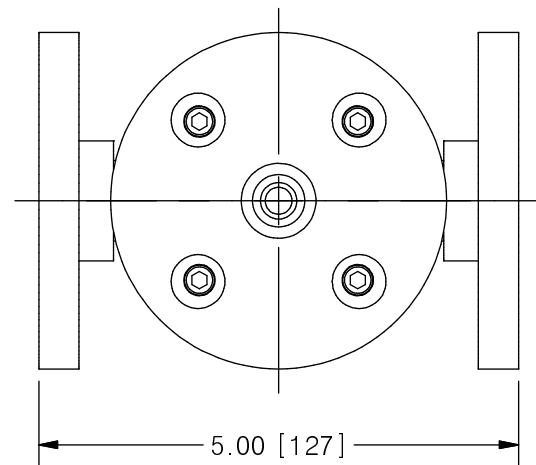
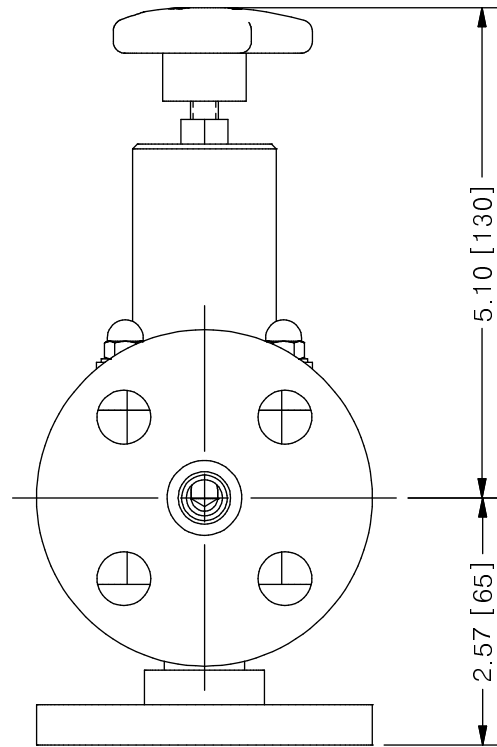
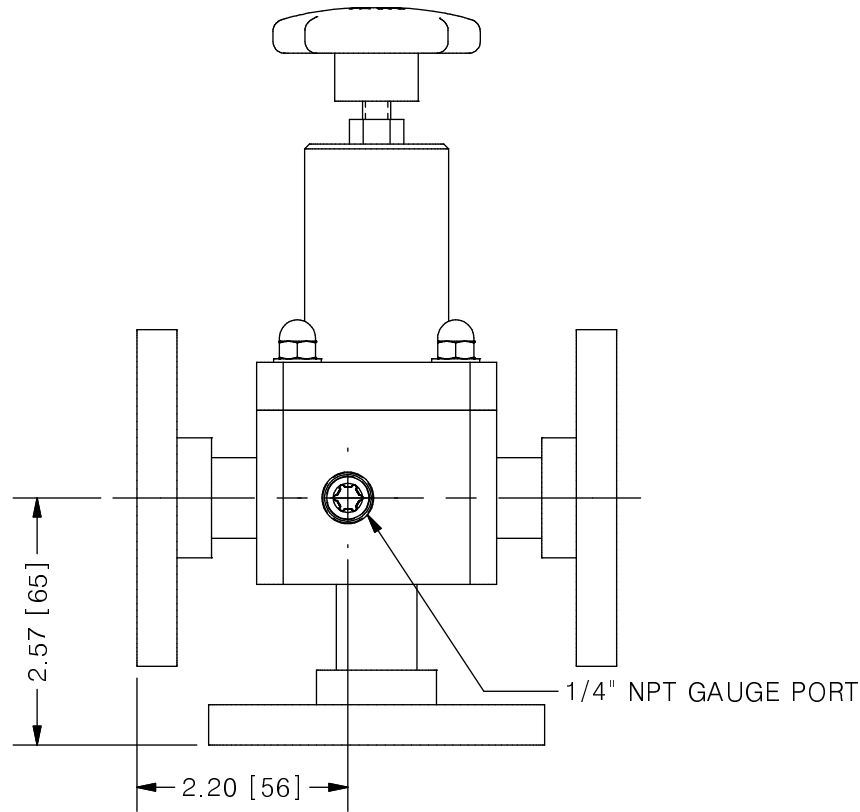


THIS DRAWING IS THE PROPERTY OF PRIMARY FLUID SYSTEMS INC. FROM WHICH A WRITTEN CONSENT FOR APPROVAL SHALL BE REQUIRED PRIOR TO COPYING.

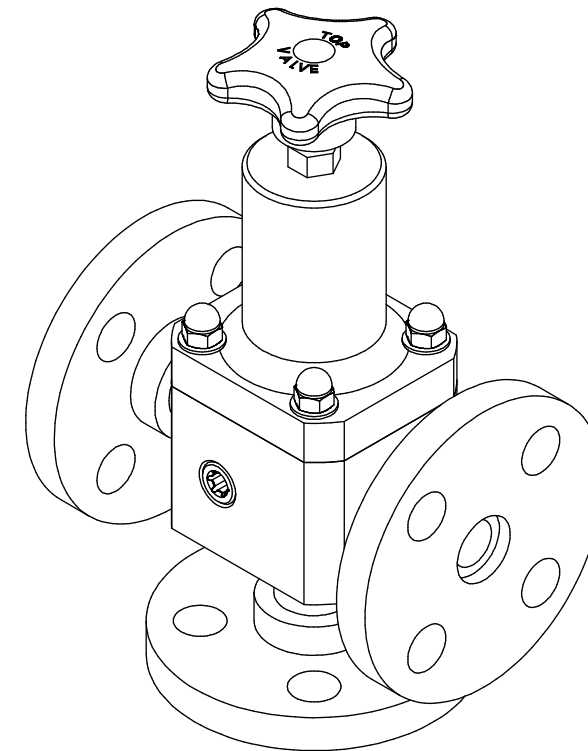


# TOP VALVE® TVP PRESSURE RELIEF VALVE



SCALE 1 : 2

| NO.                    | NAME                                | DESCRIPTION                        |
|------------------------|-------------------------------------|------------------------------------|
| 1                      | MAX ALLOWABLE OPERATING TEMPERATURE | 180°F (82°C)                       |
| 2                      | MAX ALLOWABLE OPERATING PRESSURE    | 150 PSIG @ 70°F                    |
| CONNECTIONS            |                                     |                                    |
| 3                      | SIZE: INLET/OUTLET PORTS            | 1/2"                               |
| 4                      | SIZE: RELIEF PORT                   | 1/2"                               |
| 5                      | CONNECTION TYPE                     | ANSI FLANGE FUSION WELD            |
| MATERIALS (WETTED)     |                                     |                                    |
| 6                      | BODY                                | PP/PVDF                            |
| 7                      | DIAPHRAGM                           | PTFE BACKED EPDM                   |
| 8                      | FLANGES                             | PP/PVDF                            |
| MATERIALS (NON-WETTED) |                                     |                                    |
| 9                      | SPRING BONNET/TOP                   | CPVC                               |
| 10                     | SPRING                              | NICKEL PLATED MUSIC WIRE ASTM A228 |
| 11                     | TOP/BOTTOM DISC                     | POLYPROPYLENE                      |
| 12                     | BOLTS, NUTS, WASHERS                | STAINLESS STEEL                    |
| 13                     | FACTORY SET PRESSURE                | 50 PSIG                            |
| 14                     | SPRING RANGE                        | 7-150 PSIG                         |



| REV | DESCRIPTION | DATE | NAME |
|-----|-------------|------|------|
| 0   | NEW DRAWING | --   | --   |

|   |  |                        |                        |   |
|---|--|------------------------|------------------------|---|
| <b>PRIMARY FLUID SYSTEMS INC.</b><br>1050 COOKE BLVD, BURLINGTON, ONTARIO L7T 4A8 |  | PROJECT: TVP           | SHT: 1 OF 1            | DRAWN BY: NG  |
| TITLE: 1/4" PRESSURE RELIEF TOP VALVE WITH 1/2" 150# FW FLANGES PLUS GAUGE PORT   |  | DATE DRAWN: 7/28/2016  | SCALE: 1 : 2           | UNITS: INCH [mm]  |
| DWG NAME: TOP VALVE<br>DWG TYPE: PLANAR VIEW                                      |  | MATERIAL: SEE CHART    | DWG NO: TVPF45-PP-G_R0 | DIMENSIONAL TOLERANCE<br>0.X = ± 0.25"<br>0.XX = ± 0.25"<br>0.XXX = ± 0.25" |
| APPROVED BY: _____<br>CHECKED BY: _____   |  | THIRD ANGLE PROJECTION |                        | REV# 0<br>SHEET SIZE: B   |