

THIS DRAWING IS THE PROPERTY OF PRIMARY FLUID SYSTEMS INC. FROM WHICH A WRITTEN CONSENT FOR APPROVAL SHALL BE REQUIRED PRIOR TO COPYING.

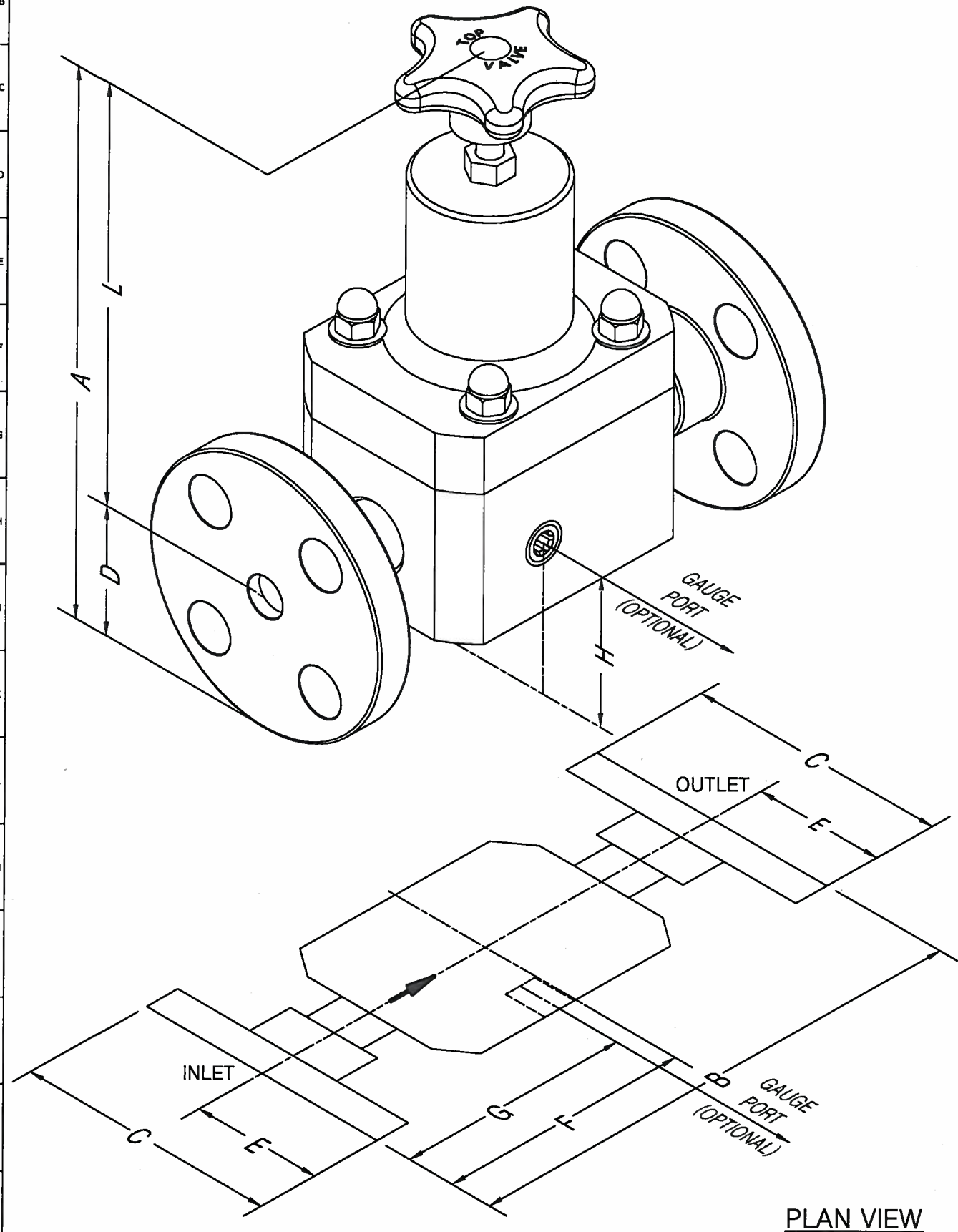
REVISION HISTORY			
REV	DESCRIPTION	DATE	NAME
4	UPDATED FORMATING; 1/4"X1/2" [DIM"A"] 6.76 WAS 6.85; ADDED DIM L	7/17/2017	BRJB

APPROVED JUL 24 2017

DIMENSIONS (INCHES)									
SIZE	OVERALL				INLET/OUTLET			GAUGE PORT (OPTIONAL)	
	A*	B	C	L*	D	E	F	G	H
1/4"X1/2"	6.76	5.94	3.50	5.01	1.75	1.75	2.97	2.67	1.75
1/2"	7.35	6.75	3.50	5.60	1.75	1.75	3.375	2.845	1.75
3/4"	7.54	6.75	3.88	5.60	1.94	1.94	3.375	2.845	1.94
1"	7.825	7.655	4.25	5.701	2.125	2.125	3.83	3.358	2.125
1.5"	8.56	8.081	5.00	6.06	2.50	2.50	4.04	3.45	2.50
2"	9.30	9.25	6.00	6.30	3.00	3.00	4.625	4.063	3.00

\* DIMENSIONS ARE APPROXIMATE FOR OVERALL HEIGHT BASED ON PRESSURE SETTING

SUBJECT TO CHANGE WITHOUT NOTICE  
TOLERANCE +/- 0.25"



PLAN VIEW

<b>PRIMARY FLUID SYSTEMS INC.</b> 1050 COOKE BLVD, BURLINGTON, ONTARIO L7T 4A8	PROJECT: TOP VALVE	SHT: 1 OF 1	DRAWN BY: BRJB
	DATE DRAWN: 7/17/2017	SCALE: NTS	UNITS: INCHES
TITLE: TOP VALVE BACK PRESSURE VALVE FLANGED DIMENSIONS	MATERIAL: PVC&CPVC	DWG NO: TVBFLGPVC&CPVC_R4	REV# 4
DWG NAME: ASSEMBLY DRAWING	APPROVED BY:	CHECKED BY: FS	DIMENSIONAL TOLERANCE 0.X = ± 0.25" 0.XX = ± 0.25" 0.XXX = ± 0.25"
DWG TYPE: PLANAR VIEW	THIRD ANGLE PROJECTION		SHEET SIZE: B