

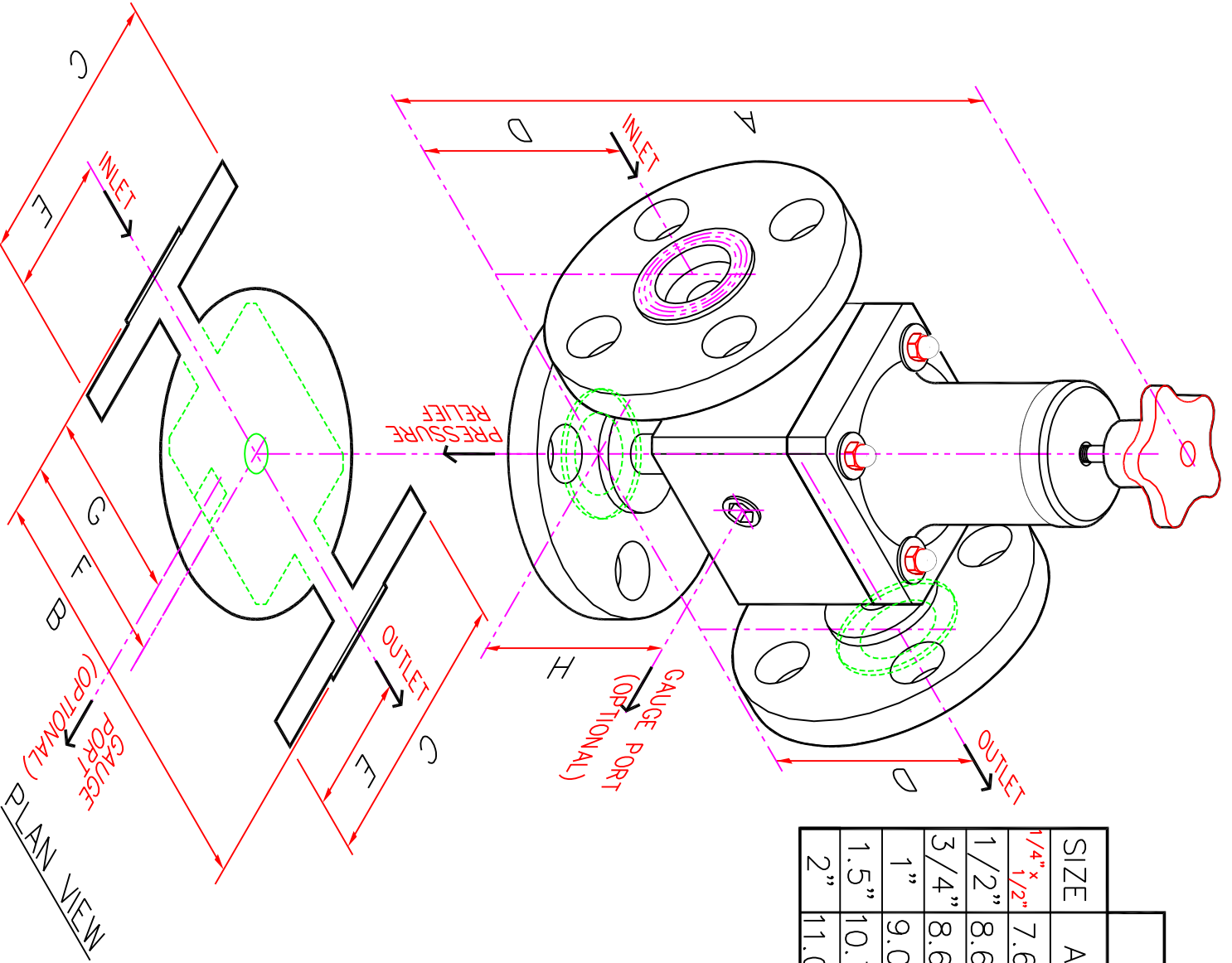
DIMENSIONS (INCHES)

| SIZE | OVERALL | | | INLET/OUTLET | | PRESS. RELIEF | GAGE PORT (OPTIONAL) | |
|-------------|---------|-------|------|--------------|-------|---------------|----------------------|-------|
| | A** | B*** | C | D*** | E | F*** | G*** | H*** |
| 1/4" x 1/2" | 7.67 | 5.00 | 3.50 | 2.57 | 1.75 | 2.50 | 2.20 | 2.57 |
| 1/2" | 8.63 | 6.75 | 3.50 | 3.025 | 1.75 | 3.375 | 2.845 | 3.025 |
| 3/4" | 8.63 | 6.75 | 3.88 | 3.025 | 1.94 | 3.375 | 2.845 | 3.025 |
| 1" | 9.00 | 7.500 | 4.25 | 3.300 | 2.125 | 3.75 | 3.28 | 3.300 |
| 1.5" | 10.70 | 7.625 | 5.00 | 4.641 | 2.500 | 3.813 | 3.219 | 4.641 |
| 2" | 11.00 | 9.03 | 6.00 | 4.685 | 3.00 | 4.513 | 3.918 | 4.685 |

* DIMENSIONS ARE APPROXIMATE FOR OVERALL HEIGHT BASED ON VALVE FACTORY SET AT 50 PSIG.

*** B, D, F, G & H DIMENSIONS BASED ON FLAT FACE FLANGES.

NOTE: RELIEF PORTS
 1-1/2" VALVES (ALL MATERIALS) RELIEF PORT IS 1" FLANGE CONNECTION
 2" VALVES (ALL MATERIALS) RELIEF PORT IS 1-1/2" FLANGE CONNECTION
 SUBJECT TO CHANGE WITHOUT NOTICE
 TOLERANCE +/- .25"



Primary Fluid Systems Inc.

1050 COOKE BOULEVARD, BURLINGTON, ONTARIO L7T4A8

TOP VALVE PRESSURE RELIEF VALVE FLANGED DIMENSIONS

POLYPROPYLENE & PVDF

| | | | | | | |
|---------|----------|----------|-----|----------|---------------|-------|
| SCALE | NTS | DISC | v12 | DRAWN BY | BRB | REV # |
| DATE | 11 03 03 | APPROVED | | DWG NO. | TVPFLGPP&PVDF | 3 |
| PROJECT | | | | | | |

DO NOT COPY WITHOUT PRIOR WRITTEN APPROVAL FROM PRIMARY FLUID SYSTEMS.