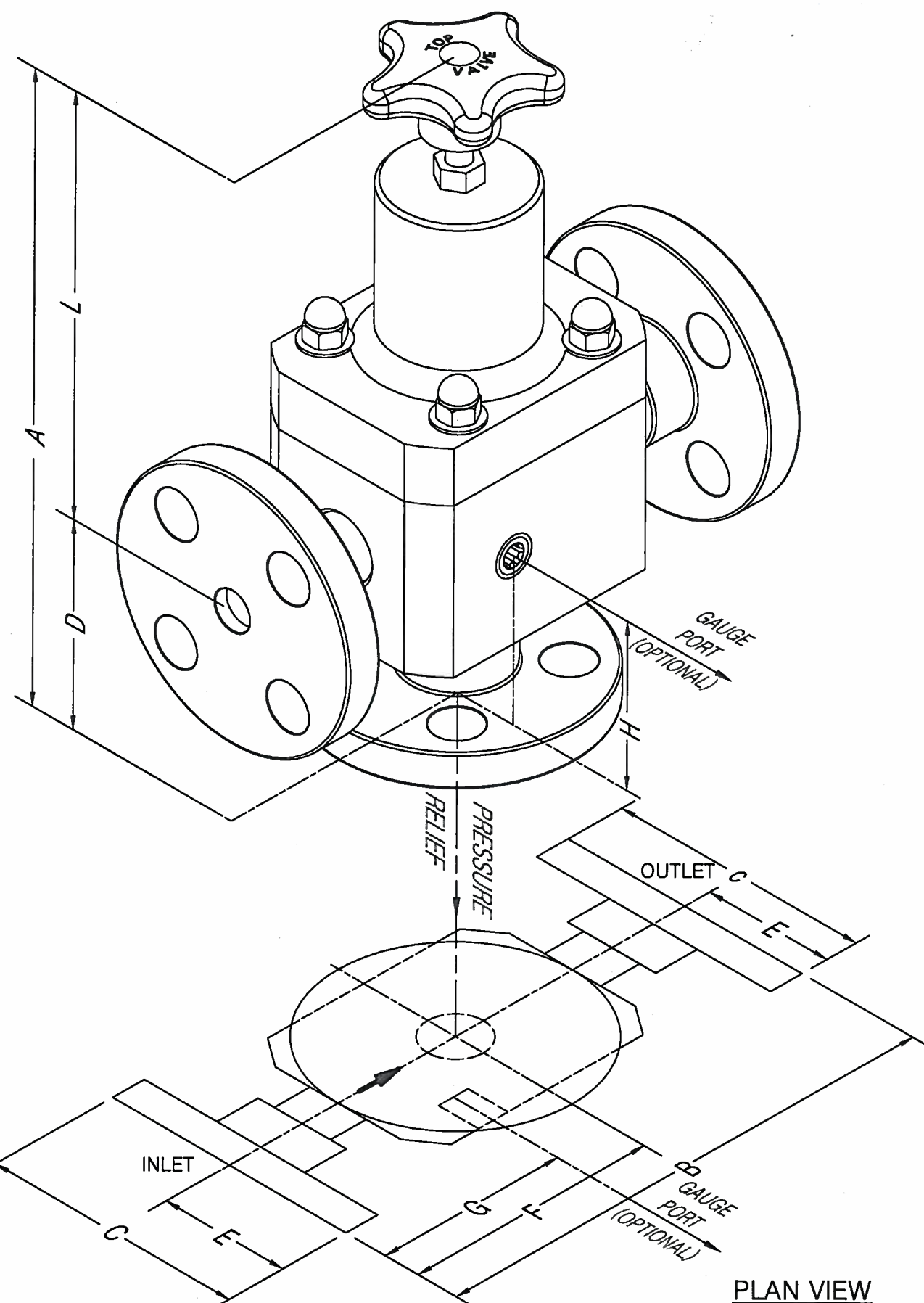


THIS DRAWING IS THE PROPERTY OF PRIMARY FLUID SYSTEMS INC. FROM WHICH A WRITTEN CONSENT FOR APPROVAL SHALL BE REQUIRED PRIOR TO COPYING.

REVISION HISTORY			
REV	DESCRIPTION	DATE	NAME
4	UPDATED FORMATING; ADDED L DIM COLUMN.	7/17/2017	BRJB

APPROVED JUL 18 2017



DIMENSIONS (INCHES)									
SIZE	OVERALL				INLET/OUTLET		PRESS. RELIEF	GAUGE PORT (OPTIONAL)	
	A*	B	C	L*	D	E	F	G	H
1/4"X1/2"	7.72	5.94	3.50	5.10	2.62	1.75	2.97	2.67	2.62
1/2"	8.38	6.75	3.50	5.60	2.775	1.75	3.375	2.845	2.775
3/4"	8.38	6.75	3.88	5.60	2.775	1.94	3.375	2.845	2.775
1"	9.09	7.655	4.25	5.701	3.385	2.125	3.83	3.358	3.385
1.5"	9.09	8.081	5.00	6.06	3.53	2.50	4.04	3.45	3.53
2"	10.98	9.25	6.00	6.30	4.685	3.00	4.625	4.063	4.685

* DIMENSIONS ARE APPROXIMATE FOR OVERALL HEIGHT BASED ON PRESSURE SETTING

NOTE: RELIEF PORTS
 1-1/2" VALVES (ALL MATERIALS) RELIEF PORT IS 1" FLANGED CONNECTION
 2" VALVES (ALL MATERIALS) RELIEF PORT IS 1-1/2" FLANGED CONNECTION

SUBJECT TO CHANGE WITHOUT NOTICE
 TOLERANCE +/- 0.25"

PRIMARY FLUID SYSTEMS INC. 1050 COOKE BLVD, BURLINGTON, ONTARIO L7T 4A8	PROJECT: TOP VALVE	SHT: 1 OF 1	DRAWN BY: BRJB
	DATE DRAWN: 7/17/2017	SCALE: NTS	UNITS: INCH
TITLE: TOP VALVE PRESSURE RELIEF VALVE FLANGED DIMENSIONS	MATERIAL: PVC&CPVC	DWG NO:	REV# 4
DWG NAME: ASSEMBLY DRAWING	TVPFLGPVC&CPVC_R4	APPROVED BY:	DIMENSIONAL TOLERANCE 0.X = ± 0.25" 0.XX = ± 0.25" 0.XXX = ± 0.25"
DWG TYPE: PLANAR VIEW	CHECKED BY: FS	THIRD ANGLE PROJECTION	SHEET SIZE: B