

# ACCU-PULSE IV Pulsation Dampeners

Chargeable / Metal



- remove pulsating flows from positive displacement pumps
- increase system efficiency and pump life
- decrease maintenance and costs
- protect pipes, meters, instruments, valves, gaskets and seals from pulsation and vibration
- ensure meter accuracy, longevity and repeatability
- reduce pressure fluctuations and diaphragm wear
- prevent foaming and splashing

## FEATURES

- compact design
- 150 psi rating
- extensive range of materials
- easy in-line maintenance
- 2 year warranty

## Technical Data

**Unit Capacity:** 4.8 US Gallons

**Weight:** 71-76 pounds

**Air Control:** Gas Fill Valve

**Inlet Port:** 3" 150# RF Flange

**Pressure Limit:** 150 psi at 70° F \*\*

**Shell Materials:** 316L Stainless Steel, Hastelloy C, Carbon Steel

**Elastomers:** Neoprene, Buna-N, EPDM, Viton, Hypalon, Silicone, Aflas

**\*\*Caution:** Temperature and pressure affect the strength and chemical resistance of plastic and rubber.



PRIMARY FLUID  
SYSTEMS INC.

Call Toll Free 1-800-776-6580  
Tel (905) 333-8743 Fax (905) 333-8746

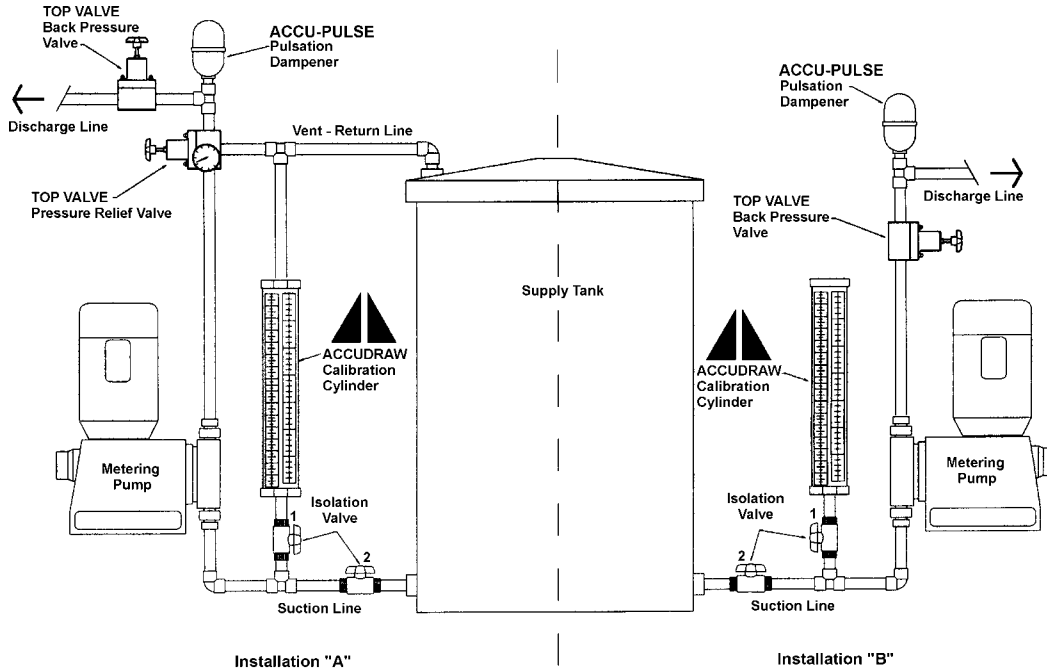
E-Mail: [primary@primaryfluid.com](mailto:primary@primaryfluid.com)  
<http://www.primaryfluid.com>

# ACCU-PULSE IV Pulsation Dampeners

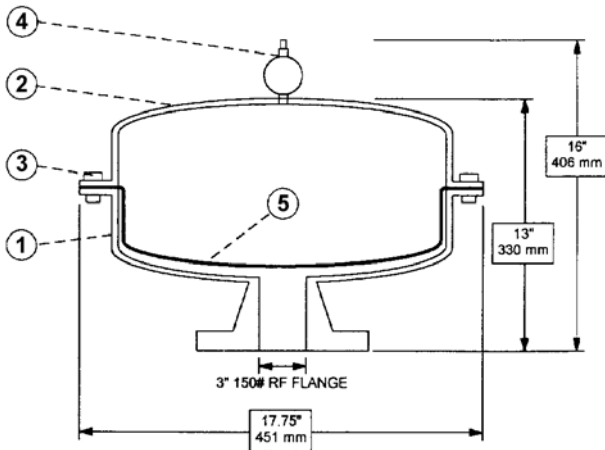
## Operation:

ACCU-Pulse pulsation dampeners operate on the principal that volume is inversely proportional to pressure. Compressed air or gas is introduced into the top section of ACCU-Pulse to a specified pressure that must be lower than the pump's discharge pressure. When a pump or valve introduces a pulse, fluid enters the dampener and compresses the trapped gas. The fluid remains in the dampener until the system pressure returns to normal, when the valve is reopened or the pump begins its next cycle. The fluid is then pushed back into the system piping as the trapped gas expands. ACCU-Pulse does NOT restrict fluid flow, or increase system pressure. ACCU-Pulse fills the fluid voids and pressure fluctuations created by reciprocating pumps.

## Typical Installations:



## Dimensions:



## Parts Description:

Item	Part #	Quantity	Description
1	4020-27	1	Stainless Steel Bottom
	4040-27		Mild Steel (MS) Bottom
	4045-27		Epoxy Coated MS Bottom
2	4020-24	1	Stainless Steel Top
	4040-24		Mild Steel Top
	4045-24		Epoxy Coated MS Top
3	4020-47	12	SS Bolt Washer, Nylok Nut
4	4020-32	1	Air Assembly - SS Models
	4040-32		Air Assembly - MS Models
5	4000-25	1	Bladder, Neoprene
	4000-29		Bladder, Buna-N
	4000-28		Bladder, Nordel (EPDM)
	4000-31		Bladder, Viton
	4000-30		Bladder, Hypalon
	4000-40		Bladder, Food Grade Silicone
	4000-55		Bladder, Aflas

Distributed by:



PRIMARY FLUID  
SYSTEMS INC.

Call Toll Free 1-800-776-6580

Tel: (905) 333-8743

Fax: (905) 333-8746

E-Mail: [primary@primaryfluid.com](mailto:primary@primaryfluid.com)

<http://www.primaryfluid.com>

Distribution Territories Available

© Registered Trade Mark of Primary Fluid Systems

