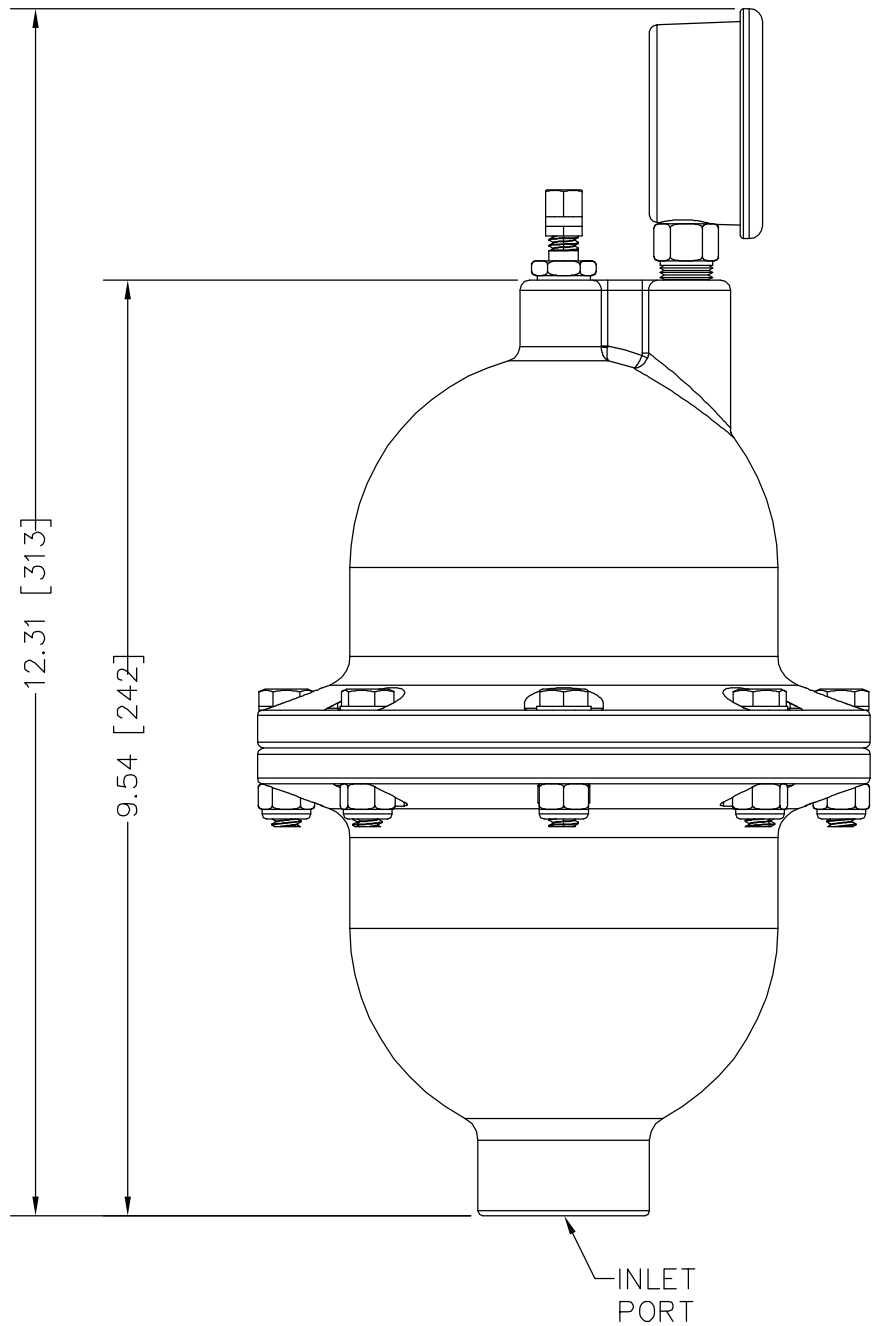
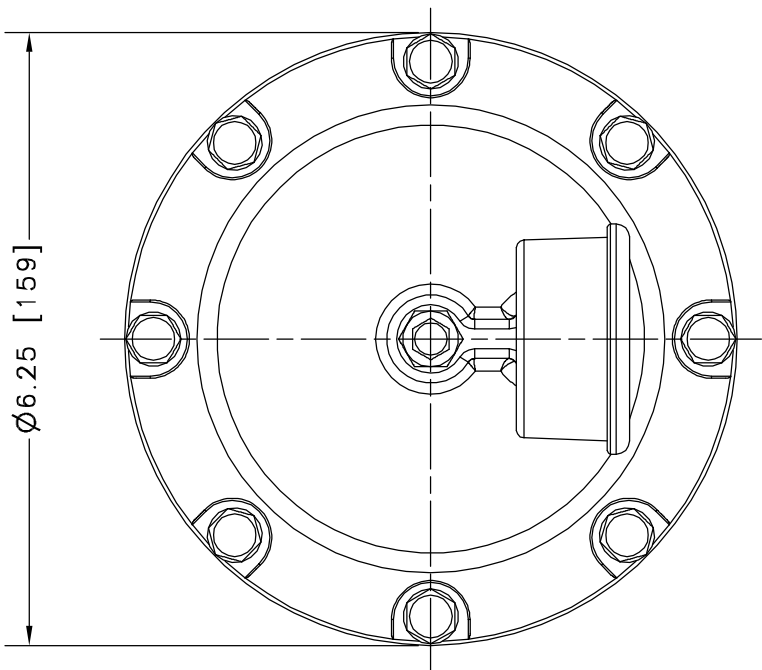
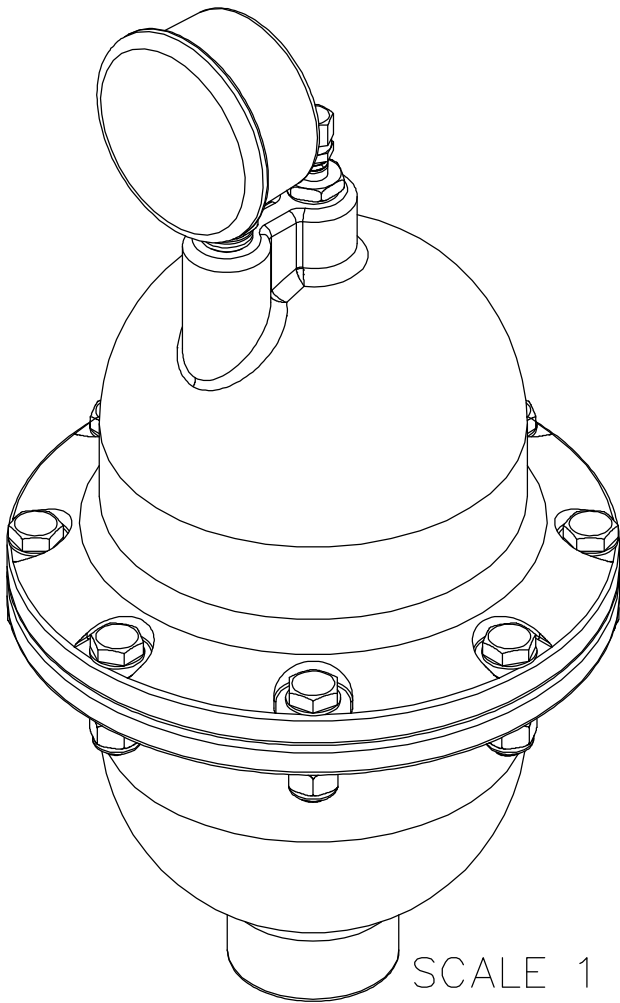


THIS DRAWING IS THE PROPERTY OF PRIMARY FLUID SYSTEMS INC. FROM WHICH A WRITTEN CONSENT FOR APPROVAL SHALL BE REQUIRED PRIOR TO COPYING.




ACCU-PULSE®
APHII PULSATION DAMPENER



SCALE 1 : 2

AVAILABLE BLADDER/BELLOW	
EPDM	
VITON	
NEOPRENE	
BUNA-N	
HYPALON	
PTFE (MAX 600 PSIG)	

NO.	NAME	DESCRIPTION
1	MAX ALLOWABLE OPERATING PRESSURE	1000PSI @ 70 (21C)
2	UNIT CAPACITY	85 CU IN
3	INLET PORT	3/4" (1" OPTIONAL)
4	CONNECTION TYPE	NPT
5	BOTTOM HOUSING (WETTED)	316 S/S / C276 / ALLOY 20
6	BLADDER (WETTED)	SEE CHART ABOVE
7	TOP HOUSING	316 S/S
8	GAUGE CASE/BACKING	STAINLESS STEEL AND BRASS
9	FILL VALVE	STAINLESS STEEL

 PRIMARY FLUID SYSTEMS INC. 1050 COOKE BLVD, BURLINGTON, ONTARIO L7T 4A8	PROJECT: AP		SHT: 1 OF 1	DRAWN BY: NIKHIL G	
	DATE DRAWN: 8/15/2016		SCALE: 1 : 2	UNITS: INCH[mm]	
TITLE: ACCU-PULSE II PULSATION DAMPENER	MATERIAL: SEE CHART			REV# 1	
	DWG NO.: APHII-ALLOY_RI			II X 17 SHEET SIZE: B	
DWG NAME: APHII	APPROVED BY:	CHECKED BY:	THIRD ANGLE PROJECTION		
DWG TYPE: <u>PLANAR VIEW 2D</u>			