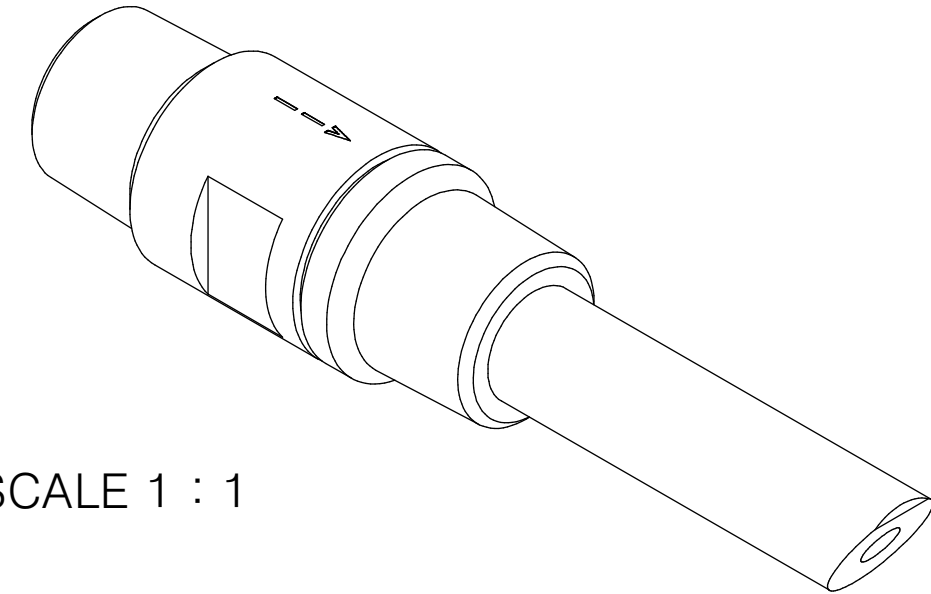
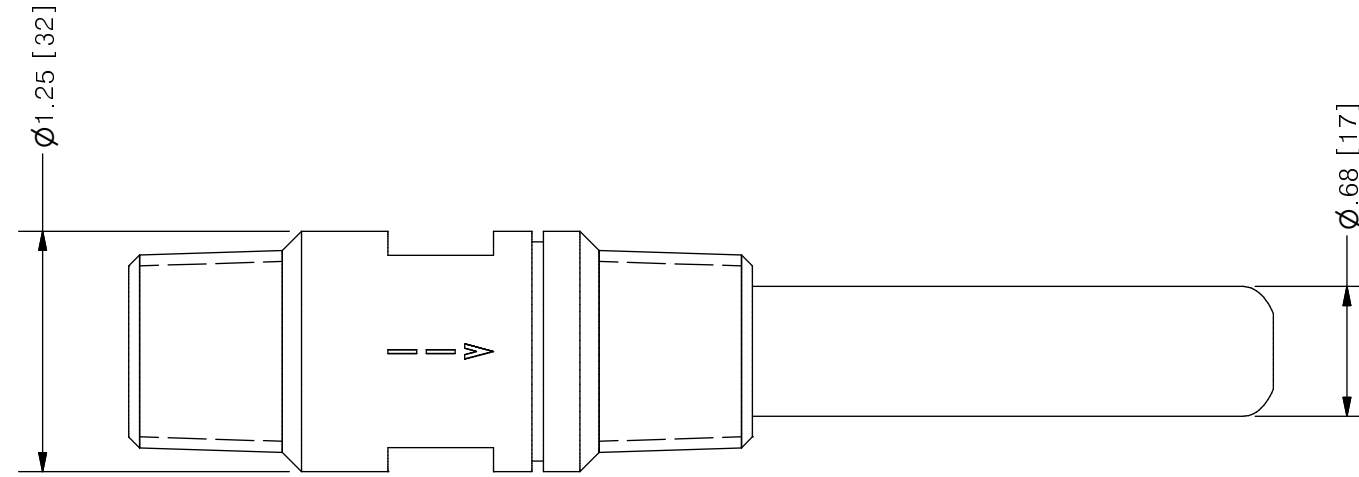


THIS DRAWING IS THE PROPERTY OF PRIMARY FLUID SYSTEMS INC. FROM WHICH A WRITTEN CONSENT FOR APPROVAL SHALL BE REQUIRED PRIOR TO COPYING.

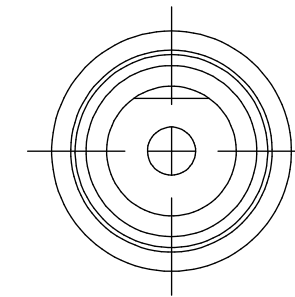
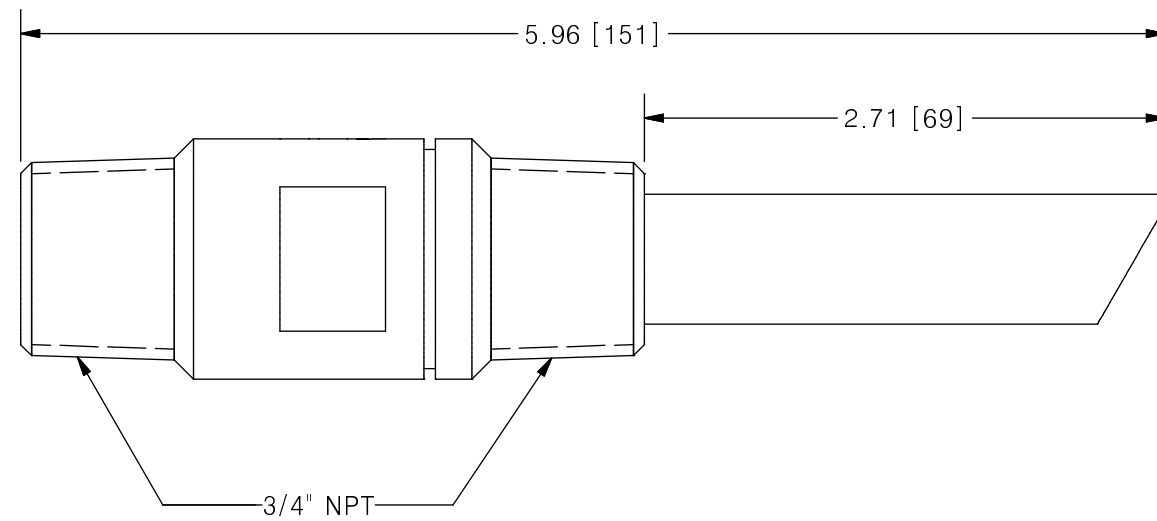
	NO.	NAME	DESCRIPTION
	1	MAX ALLOWABLE OPERATING TEMPERATURE	140°F (60°C)
	2	MAX ALLOWABLE OPERATING PRESSURE	150 PSIG
CONNECTIONS	3	INLET PORT CONNECTION	3/4"
	4	OUTLET PORT CONNECTION	3/4"
	5	TYPE	NPT
	7	ORIFICE SIZE	1/4"
MATERIALS	8	BODY, QUILL AND CHECK SEAT	PVC (CPVC, PP, PVDF OPTIONAL)
	9	BALL CHECK	CERAMIC (HAST, PVDF, TFE OPTIONAL)
	10	CHECK SPRING	316SS (HAST OPTIONAL)

INJECTION QUILLS®

MALE x MALE CONNECTION



SCALE 1 : 1



REV	DESCRIPTION	DATE	NAME
0	NEW DRAWING	--	--

REVISION HISTORY

PRIMARY FLUID SYSTEMS INC. 1050 COOKE BLVD, BURLINGTON, ONTARIO L7T 4A8		PROJECT: IQ	SHT: 1 OF 1	DRAWN BY: TJ
TITLE: 3/4" INJECTION QUILL WITH 1/4" ORIFICE		DATE DRAWN: 2/7/2017	SCALE: 1 : 1	UNITS: INCH [mm]
DWG NO: IQ-76-PVC-25		MATERIAL: SEE CHART	REV# 0	
DWG NAME: INJECTION QUILL	APPROVED BY:	CHECKED BY:	DIMENSIONAL TOLERANCE 0.XX = ± 0.25" 0.XXX = ± 0.25" 0.XXX = ± 0.25"	
DWG TYPE: PLANAR VIEW			SHEET SIZE: B	