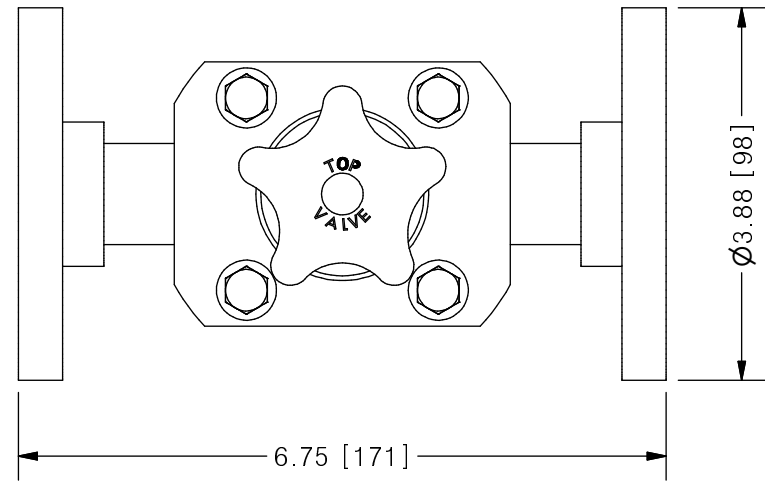
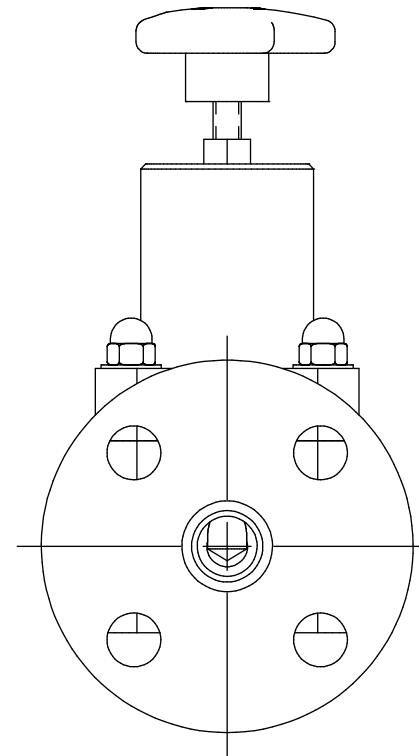
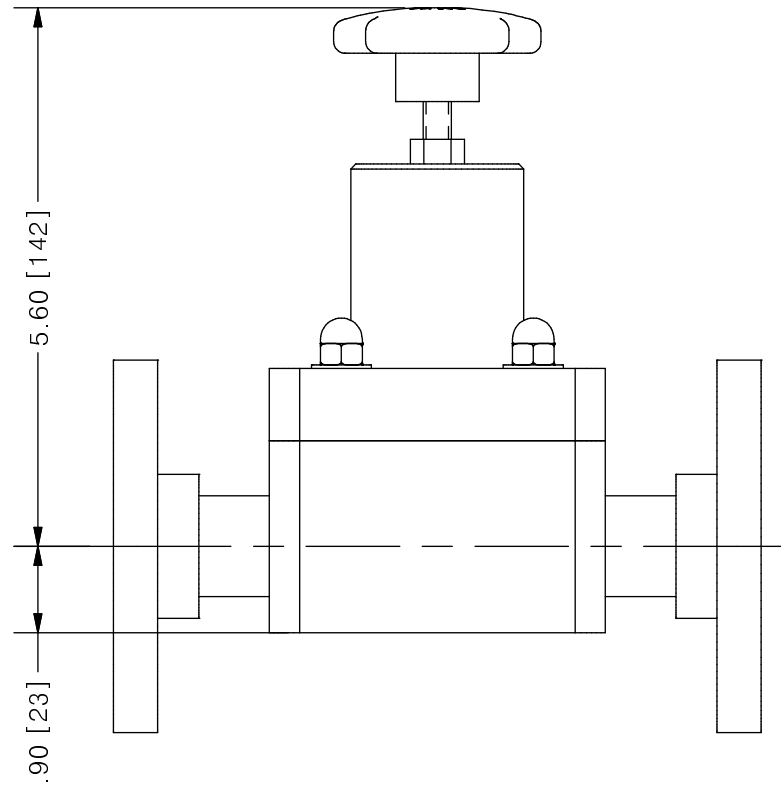
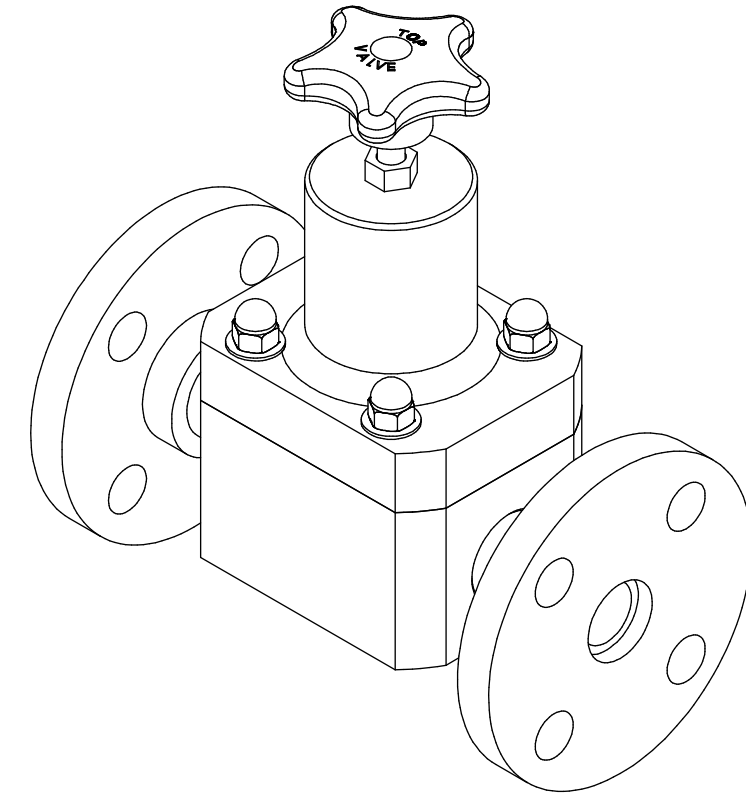


THIS DRAWING IS THE PROPERTY OF PRIMARY FLUID SYSTEMS INC. FROM WHICH A WRITTEN CONSENT FOR APPROVAL SHALL BE REQUIRED PRIOR TO COPYING.

NO.	NAME	DESCRIPTION
1	MAX ALLOWABLE OPERATING TEMPERATURE	180°F (82°C)
2	MAX ALLOWABLE OPERATING PRESSURE	150 PSIG @ 70°F
CONNECTIONS	3	SIZE: INLET/OUTLET 3/4"
	4	CONNECTION TYPE ANSI FUSION WELD FLANGE
MATERIALS (WETTED)	5	BODY PP/PVDF
	6	DIAPHRAGM PTFE BACKED EPDM
	7	FLANGE PP/PVDF
MATERIALS (NON-WETTED)	8	SPRING BONNET/TOP CPVC
	9	SPRING NICKEL PLATED MUSIC WIRE ASTM A228
	10	TOP/BOTTOM DISC POLYPROPYLENE
	11	BOLTS, NUTS, WASHERS STAINLESS STEEL
	12	FACTORY SET PRESSURE 50 PSIG
	13	SPRING RANGE 7-150 PSIG



TOP VALVE® TVB BACK PRESSURE VALVE



SCALE 1 : 2

PRIMARY FLUID SYSTEMS INC. 1050 COOKE BLVD, BURLINGTON, ONTARIO L7T 4A8		PROJECT: TVB	SHT: 1 OF 1	DRAWN BY: NG
TITLE: 3/4" BACK PRESSURE TOP VALVE WITH 3/4" 150# FW FLANGE CONNECTIONS		DATE DRAWN: 7/8/2016	SCALE: 1 : 2	UNITS: INCH [mm]
DWG NAME: TOP VALVE DWG TYPE: PLANAR VIEW		MATERIAL: SEE CHART	DWG NO: TVBF75-PP_R0	DIMENSIONAL TOLERANCE 0.XX = ± 0.25" 0.XXX = ± 0.25" 0.XXX = ± 0.25"
REV# 0		APPROVED BY:	CHECKED BY:	SHEET SIZE: B 11 X 17

REV	DESCRIPTION	DATE	NAME
0	NEW DRAWING	--	--

REVISION HISTORY