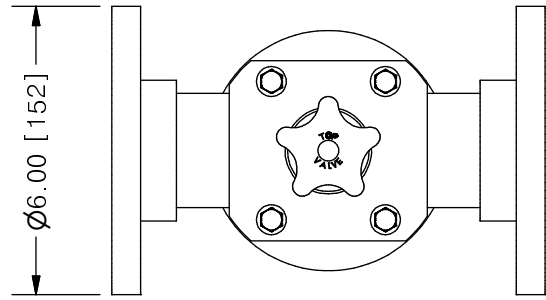
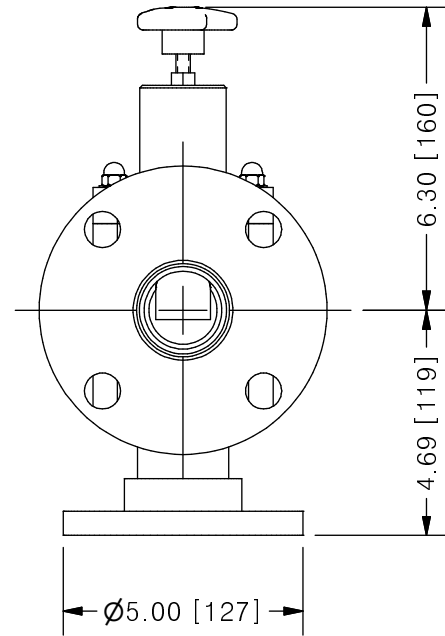
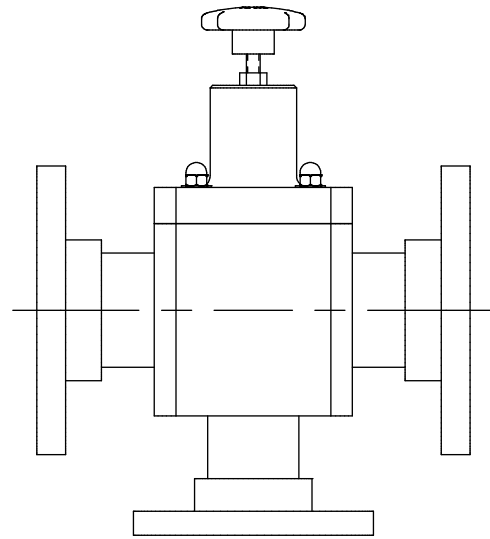


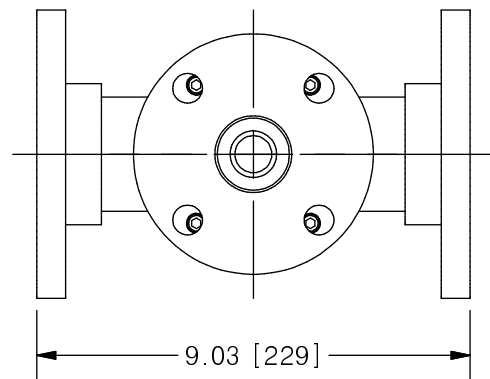
THIS DRAWING IS THE PROPERTY OF PRIMARY FLUID SYSTEMS INC. FROM WHICH A WRITTEN CONSENT FOR APPROVAL SHALL BE REQUIRED PRIOR TO COPYING.



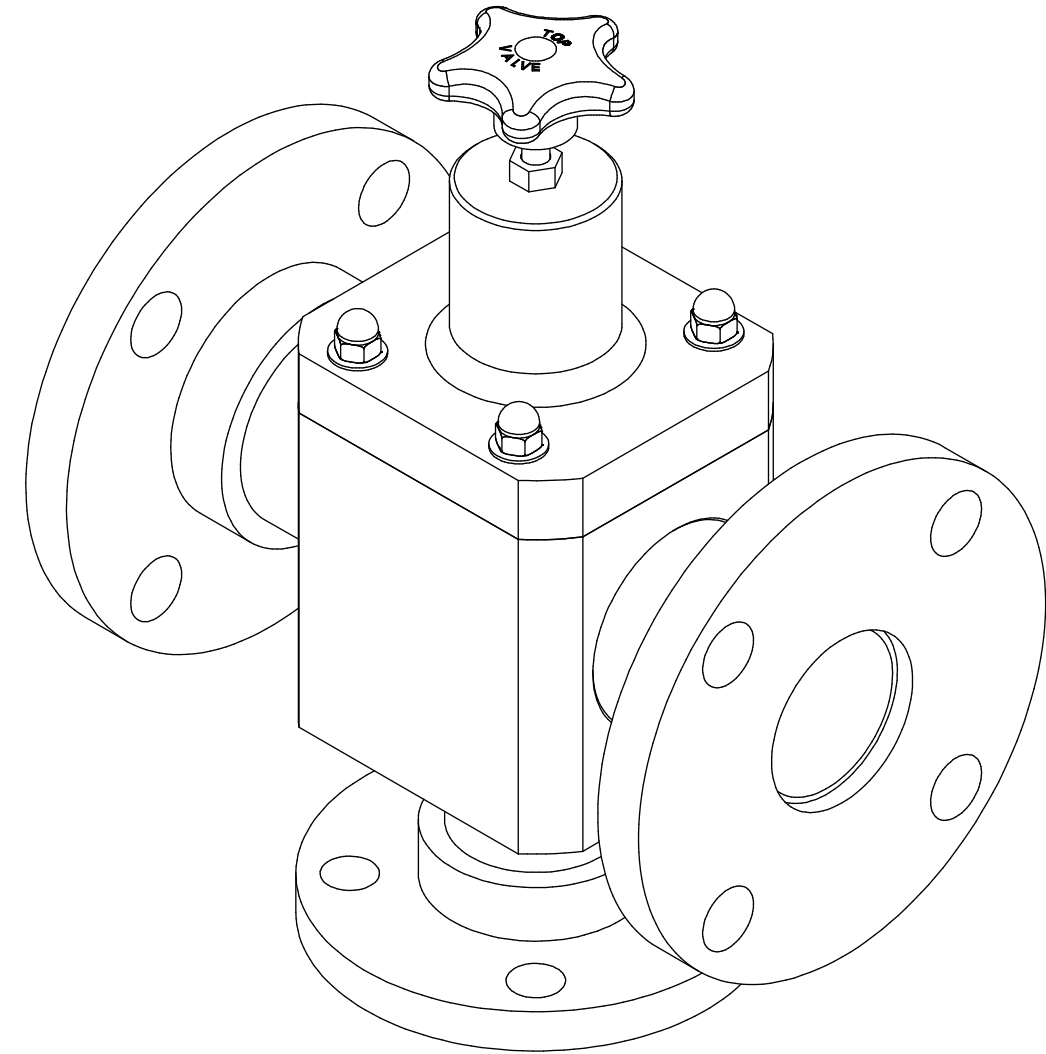
TOP VALVE® TVP PRESSURE RELIEF VALVE



SCALE 1 : 4



	NO.	NAME	DESCRIPTION
	1	MAX ALLOWABLE OPERATING TEMPERATURE	140°F (60°C)
	2	MAX ALLOWABLE OPERATING PRESSURE	150 PSIG @ 70°F
CONNECTIONS	3	SIZE: INLET/OUTLET PORTS	2"
	4	SIZE: RELIEF PORT	1-1/2"
	5	CONNECTION TYPE	ANSI FLANGE FUSION WELD
MATERIALS (WETTED)	6	BODY	PP/PVDF
	7	DIAPHRAGM	PTFE BACKED EPDM
	8	FLANGES	PP/PVDF
MATERIALS (NON-WETTED)	9	SPRING BONNET/TOP	PVC
	10	SPRING	NICKEL PLATED MUSIC WIRE ASTM A228
	11	TOP/BOTTOM DISC	POLYPROPYLENE
	12	BOLTS, NUTS, WASHERS	STAINLESS STEEL
	13	FACTORY SET PRESSURE	50 PSIG
	14	SPRING RANGE	7-150 PSIG



SCALE 1 : 2

PRIMARY FLUID SYSTEMS INC. 1050 COOKE BLVD, BURLINGTON, ONTARIO L7T 4A8		PROJECT: TVP	SHT: 1 OF 1	DRAWN BY: NG								
TITLE: 2" PRESSURE RELIEF TOP VALVE WITH 2" AND 1-1/2" 150# FW FLANGES		DATE DRAWN: 7/28/2016	SCALE: 1 : 4	UNITS: INCH [mm]								
DWG NAME: TOP VALVE		MATERIAL: SEE CHART	DWG NO: TVPF20-PP_R0	REVISION: 0								
DWG TYPE: PLANAR VIEW		APPROVED BY:	CHECKED BY:	DIMENSIONAL TOLERANCE 0.X = ± 0.25" 0.XX = ± 0.25" 0.XXX = ± 0.25"								
REVISION HISTORY <table border="1"> <thead> <tr> <th>REV</th> <th>DESCRIPTION</th> <th>DATE</th> <th>NAME</th> </tr> </thead> <tbody> <tr> <td>0</td> <td>NEW DRAWING</td> <td>--</td> <td>--</td> </tr> </tbody> </table>		REV	DESCRIPTION	DATE	NAME	0	NEW DRAWING	--	--			SHEET SIZE: B
REV	DESCRIPTION	DATE	NAME									
0	NEW DRAWING	--	--									