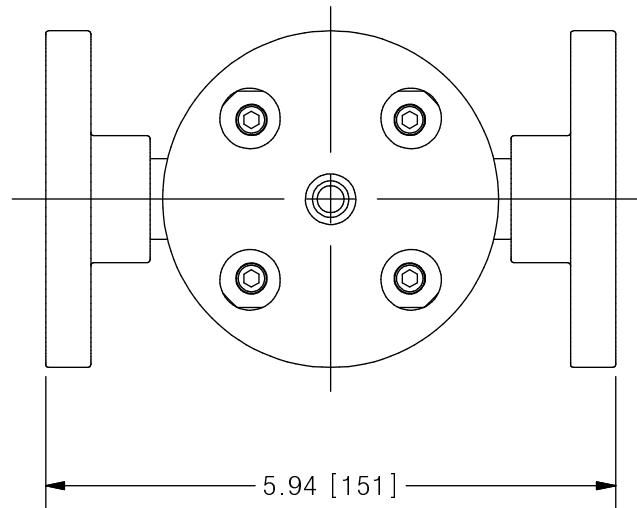
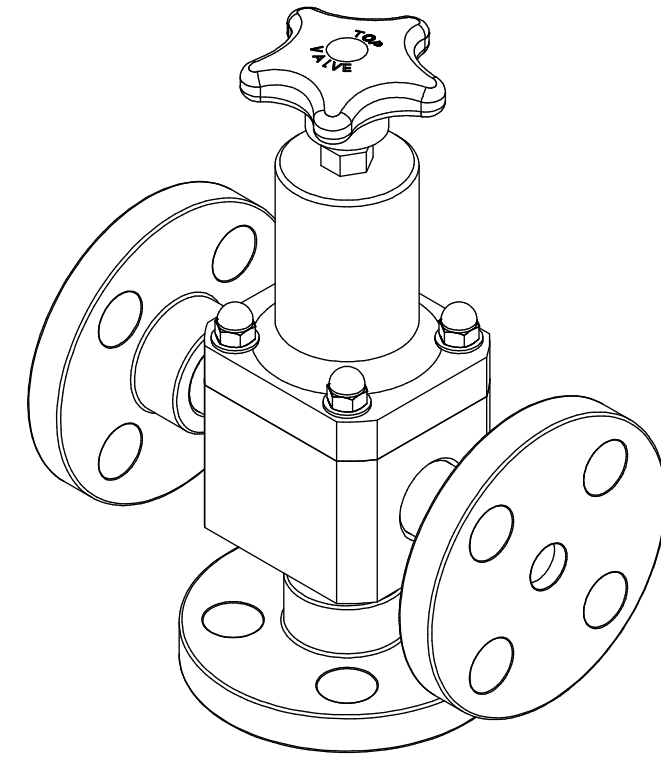
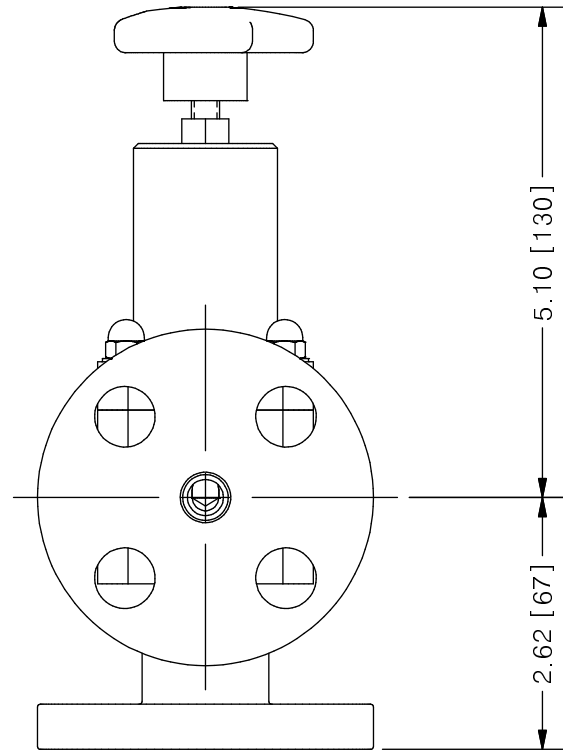
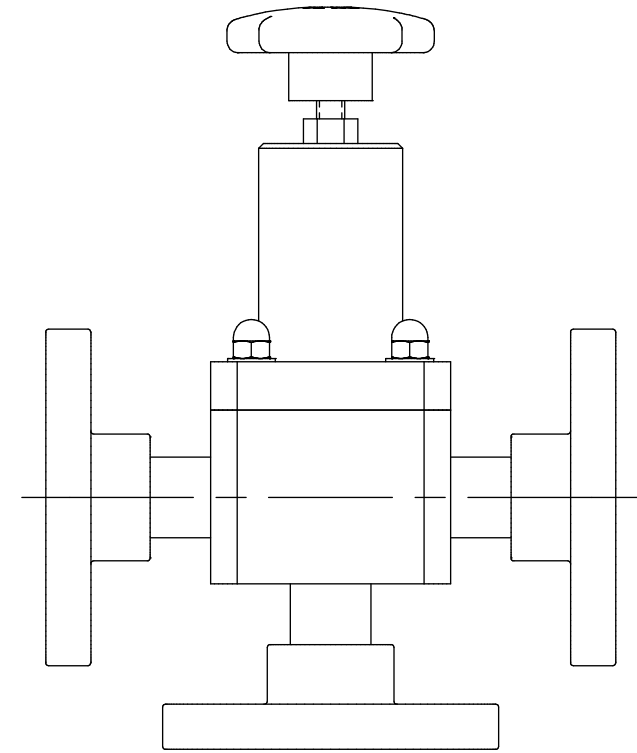
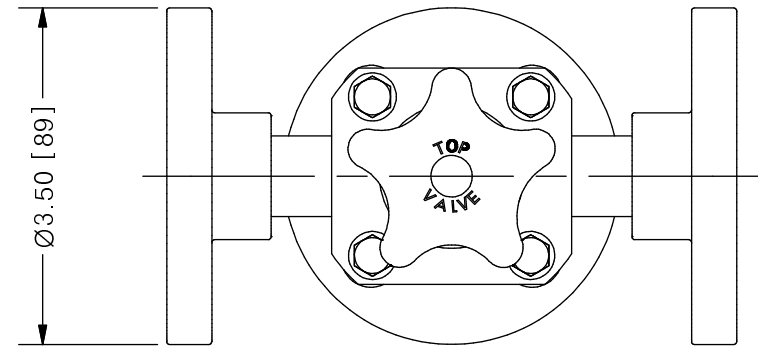


THIS DRAWING IS THE PROPERTY OF PRIMARY FLUID SYSTEMS INC. FROM WHICH A WRITTEN CONSENT FOR APPROVAL SHALL BE REQUIRED PRIOR TO COPYING.

NO.	NAME	DESCRIPTION
1	MAX ALLOWABLE OPERATING TEMPERATURE	140°F (60°C)
2	MAX ALLOWABLE OPERATING PRESSURE	150 PSIG @ 70°F
CONNECTIONS		
3	SIZE: INLET/OUTLET PORTS	1/2"
4	SIZE: RELIEF PORT	1/2"
5	CONNECTION TYPE	ANSI SW FLANGE
MATERIALS (WETTED)		
6	BODY	PVC/CPVC
7	DIAPHRAGM	VITON/EPDM/PTFE
8	FLANGES	PVC/CPVC
MATERIALS (NON-WETTED)		
9	SPRING BONNET/TOP	CPVC
10	SPRING	NICKEL PLATED MUSIC WIRE ASTM A228
11	TOP/BOTTOM DISC	POLYPROPYLENE
12	BOLTS, NUTS, WASHERS	STAINLESS STEEL
13	FACTORY SET PRESSURE	50 PSIG
14	SPRING RANGE	7-150 PSIG

TOP VALVE® TVP PRESSURE RELIEF VALVE



SCALE 1 : 2

REV	DESCRIPTION	DATE	NAME
0	NEW DRAWING	--	--

PRIMARY FLUID SYSTEMS INC. 1050 COOKE BLVD, BURLINGTON, ONTARIO L7T 4A8		PROJECT: TVP	SHT: 1 OF 1	DRAWN BY: BRJB
TITLE: 1/4" PRESSURE RELIEF TOP VALVE WITH 1/2" 150# SW FLANGES		DATE DRAWN: 6/1/2017	SCALE: 1 : 2	UNITS: INCH [mm]
DWG NAME: TOP VALVE		MATERIAL: SEE CHART	DWG NO: TVPF45-PVC_R0	REV# 0
DWG TYPE: PLANAR VIEW		APPROVED BY:	CHECKED BY:	THIRD ANGLE PROJECTION
REVISION HISTORY		DIMENSIONAL TOLERANCE 0.XX = ± 0.25" 0.XXX = ± 0.25" 0.XXXX = ± 0.25"		11 X 17 SHEET SIZE: B