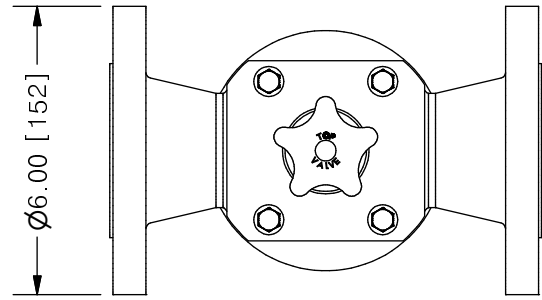
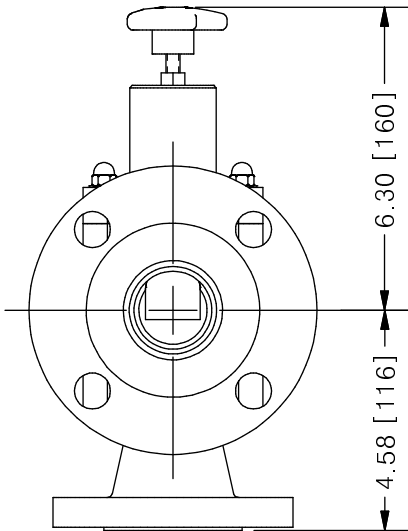
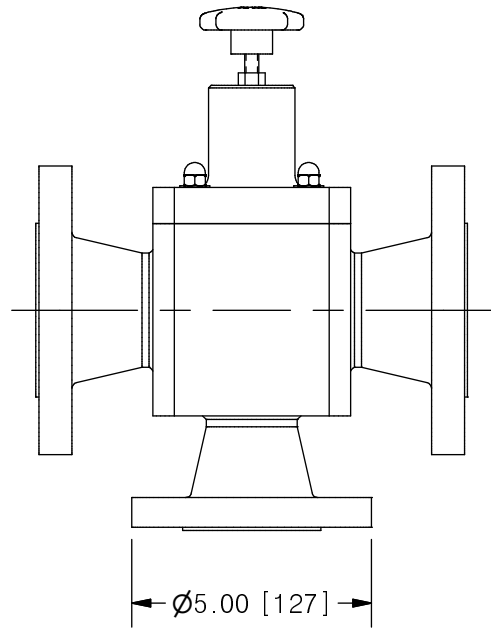


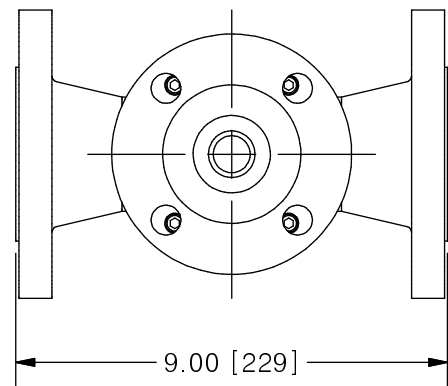
THIS DRAWING IS THE PROPERTY OF PRIMARY FLUID SYSTEMS INC. FROM WHICH A WRITTEN CONSENT FOR APPROVAL SHALL BE REQUIRED PRIOR TO COPYING.



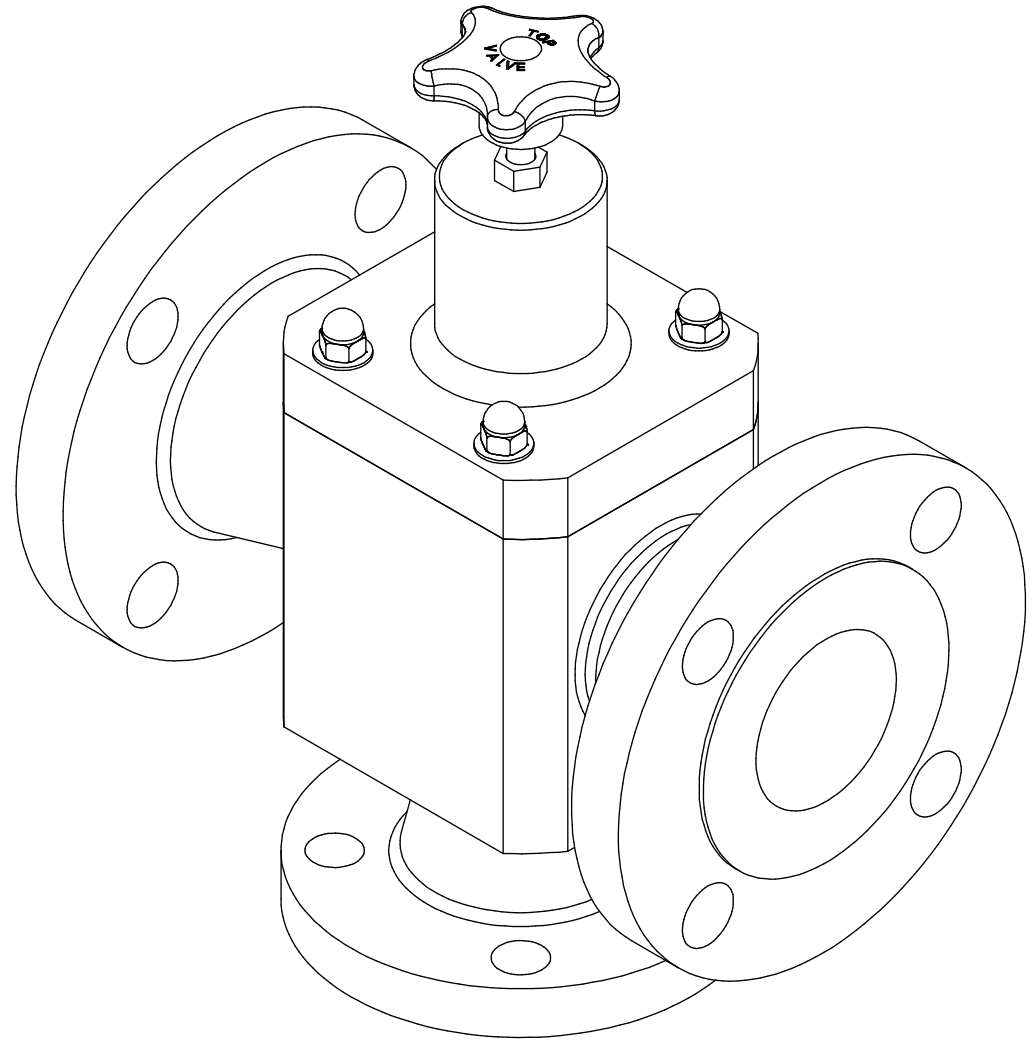
TOP VALVE® TVP PRESSURE RELIEF VALVE



SCALE 1 : 4



	NO.	NAME	DESCRIPTION
	1	MAX ALLOWABLE OPERATING TEMPERATURE	140°F (60°C)
	2	MAX ALLOWABLE OPERATING PRESSURE	150 PSIG @ 70°F
CONNECTIONS	3	SIZE: INLET/OUTLET PORTS	2"
	4	SIZE: RELIEF PORT	1-1/2"
	5	CONNECTION TYPE	ANSI FLANGE 150# RF B16.5
MATERIALS (WETTED)	6	BODY	STAINLESS STEEL
	7	DIAPHRAGM	PTFE BACKED EPDM (PVC, EPDM AND VITON OPTIONAL)
	8	FLANGES	STAINLESS STEEL
MATERIALS (NON-WETTED)	9	SPRING BONNET/TOP	PVC
	10	SPRING	NICKEL PLATED MUSIC WIRE ASTM A228
	11	TOP/BOTTOM DISC	POLYPROPYLENE
	12	BOLTS, NUTS, WASHERS	STAINLESS STEEL
	13	FACTORY SET PRESSURE	50 PSIG
	14	SPRING RANGE	7-150 PSIG



SCALE 1 : 2

PRIMARY FLUID SYSTEMS INC. 1050 COOKE BLVD, BURLINGTON, ONTARIO L7T 4A8		PROJECT: TVP	SHT: 1 OF 1	DRAWN BY: NG
TITLE: 2" PRESSURE RELIEF TOP VALVE WITH 2" AND 1-1/2" 150# WN FLANGES		DATE DRAWN: 7/28/2016	SCALE: 1 : 4	UNITS: INCH [mm]
DWG NAME: TOP VALVE DWG TYPE: PLANAR VIEW		MATERIAL: SEE CHART	DWG NO: TVPFW20-SS_R0	REVISION HISTORY
APPROVED BY: _____ CHECKED BY: _____		DIMENSIONAL TOLERANCE 0.X = ± 0.25" 0.XX = ± 0.25" 0.XXX = ± 0.25"		REV# 0 SHEET SIZE: B

REV	DESCRIPTION	DATE	NAME
0	NEW DRAWING	--	--