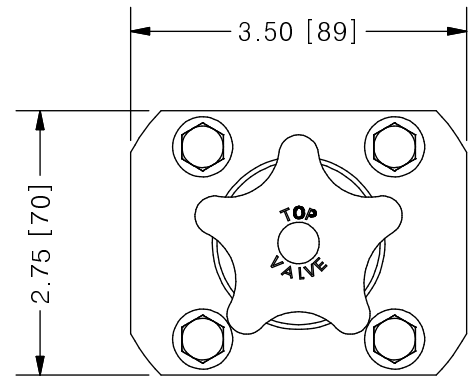
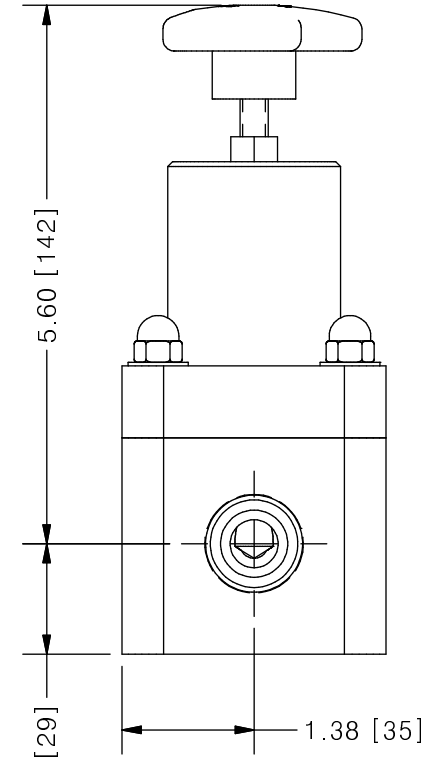
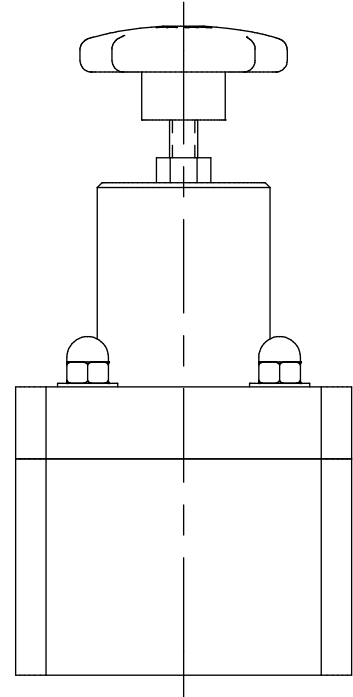


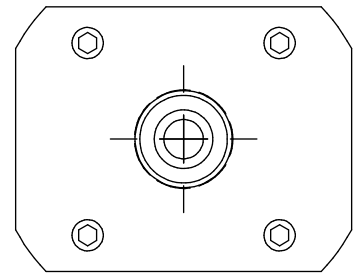
THIS DRAWING IS THE PROPERTY OF PRIMARY FLUID SYSTEMS INC. FROM WHICH A WRITTEN CONSENT FOR APPROVAL SHALL BE REQUIRED PRIOR TO COPYING.



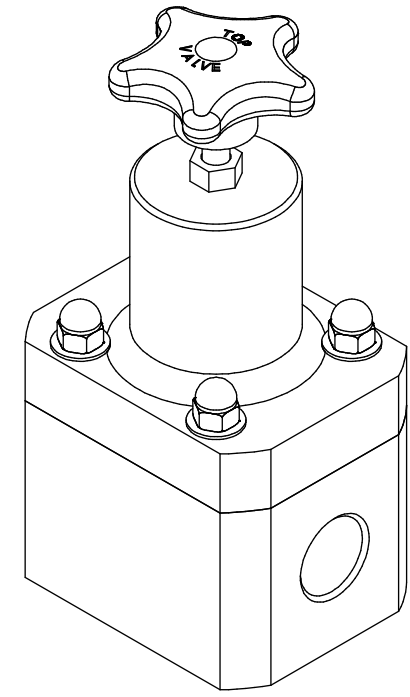
### TOP VALVE® TVP PRESSURE RELIEF VALVE



SCALE 1 : 2



NO.	NAME	DESCRIPTION
1	MAX ALLOWABLE OPERATING TEMPERATURE	140°F (60°C)
2	MAX ALLOWABLE OPERATING PRESSURE	150 PSIG
CONNECTIONS		
3	SIZE: INLET/OUTLET PORTS	3/4"
4	SIZE: RELIEF PORT	3/4"
5	CONNECTION TYPE	NPT
MATERIALS (WETTED)		
6	BODY	PVC
7	DIAPHRAGM	PTFE BACKED EPDM
MATERIALS (NON-WETTED)		
8	SPRING BONNET/TOP	CPVC
9	SPRING	NICKEL PLATED MUSIC WIRE ASTM A228
10	TOP/BOTTOM DISC	POLYPROPYLENE
11	BOLTS, NUTS, WASHERS	STAINLESS STEEL
12	FACTORY SET PRESSURE	50 PSIG
13	SPRING RANGE	7-150 PSIG



<b>PRIMARY FLUID SYSTEMS INC.</b> 1050 COOKE BLVD, BURLINGTON, ONTARIO L7T 4A8		PROJECT: TVP	SHT: 1 OF 1	DRAWN BY: NG								
TITLE: 3/4" PRESSURE RELIEF TOP VALVE WITH 3/4" NPT CONNECTIONS		DATE DRAWN: 8/1/2016	SCALE: 1 : 2	UNITS: INCH [mm]								
DWG NAME: TOP VALVE		MATERIAL: SEE CHART	DWG NO: TVPR75-PVC_R0	REVISION HISTORY								
DWG TYPE: PLANAR VIEW		APPROVED BY:	CHECKED BY:	<table border="1"> <tr> <th>REV</th> <th>DESCRIPTION</th> <th>DATE</th> <th>NAME</th> </tr> <tr> <td>0</td> <td>NEW DRAWING</td> <td>--</td> <td>--</td> </tr> </table>	REV	DESCRIPTION	DATE	NAME	0	NEW DRAWING	--	--
REV	DESCRIPTION	DATE	NAME									
0	NEW DRAWING	--	--									
				<table border="1"> <tr> <td colspan="2"> <b>DIMENSIONAL TOLERANCE</b>            0.XX = ± 0.25"            0.XXX = ± 0.25"            0.XXX = ± 0.25"         </td> <td>           11 X 17            SHEET            SIZE:  <b>B</b> </td> </tr> </table>	<b>DIMENSIONAL TOLERANCE</b> 0.XX = ± 0.25" 0.XXX = ± 0.25" 0.XXX = ± 0.25"		11 X 17 SHEET SIZE: <b>B</b>					
<b>DIMENSIONAL TOLERANCE</b> 0.XX = ± 0.25" 0.XXX = ± 0.25" 0.XXX = ± 0.25"		11 X 17 SHEET SIZE: <b>B</b>										