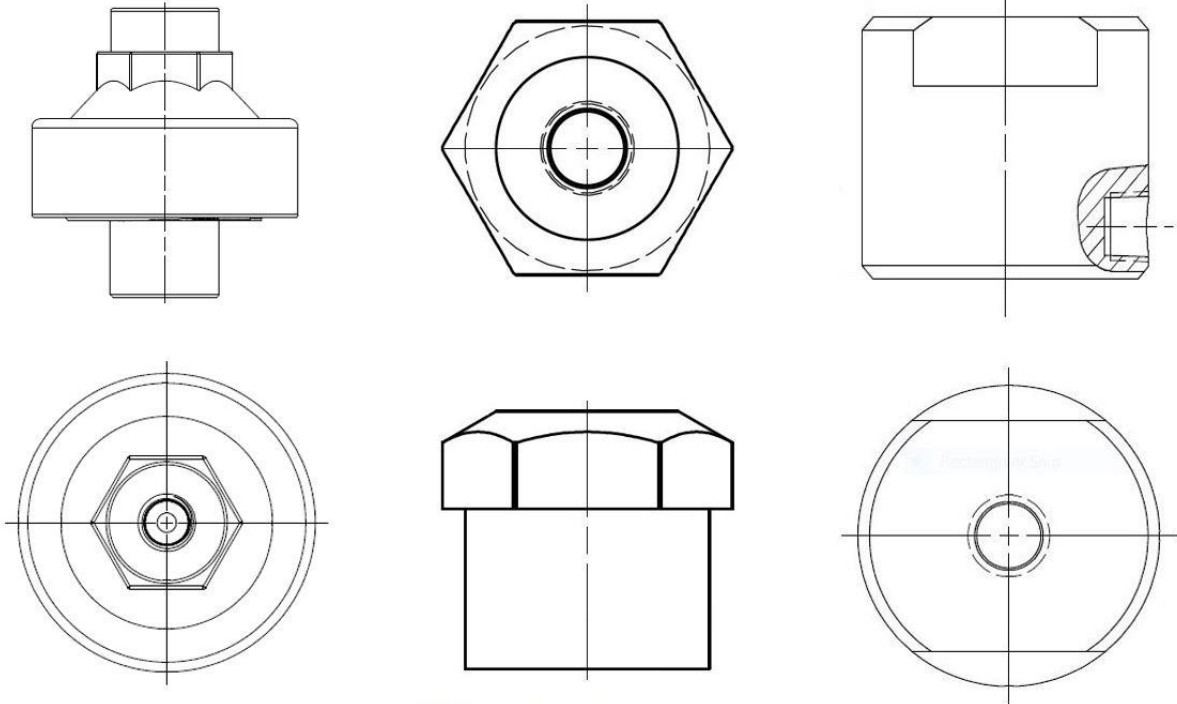


# AccuGuard

## Diaphragm Seals

### 2024 USD Price List



#### HOW TO ORDER - AccuGuard

Example Part Number: AG25A25A-PVC-V-M-[Optional Gauge]

**AG 25 A 25 A - PVC - V - M - [Optional Gauge]**  
See Gauge List

**AccuGuard Diaphragm Seal**

**Connection Size (Top)**  
25 = 1/4"

**Connection Type (Top)**  
A = FNPT

**Connection Size (Bottom)**  
25 = 1/4"  
50 = 1/2"

**Connection Type (Bottom)**  
A = FNPT  
B = BSPT

**Options**  
M = Mounted Gauge/Glycerin Filled

**Diaphragm Materials**  
V = Viton (Thermoplastic Body Only)  
E = EPDM (Thermoplastic Body Only)  
T = PTFE (Thermoplastic Body Only)  
S/S = 316 S/S (S/S & S/SV Body Only)

**Body Materials**  
PVC = Polyvinylchloride  
CPVC = CPVC Corzan  
PP = Polypropylene  
(Not Available with PTFE Diaphragm)  
PVDF = Polyvinylidene Fluoride  
(PTFE Diaphragm Only)  
S/S = 316L Stainless Steel  
S/SV = Vented 316L Stainless Steel

- Optional Gauge Appears as Separate Line Item When Ordered
- Diaphragm Seals With Gauges = Glycerin Filled As Standard
- 1/4" & 1/2" MNPT Nipples Available - Call Factory for Details

## Standard Features

- Transfers process pressure accurately without direct contact with process fluids
- Removes the need for expensive instrumentation
- Easily installed and available in five chemically resistant Materials of Construction
- Optional Diaphragm Materials
- Available with 1/4" Connection Sizes in FNPT & BSPT Female Connection Types
- Thermoplastic Units Rated to 240 PSIG (16 BARG) @ 21°C (70°F)
- 316L S/S Units Rated to 5800 PSIG (400 BARG) @ 21°C (70°F)
- Approved – 316 S/S Diaphragm Seals with CRN (Canadian Registration Number)

| Model Number         | Top Connection Size/Type | Body Material | **Diaphragm Material  | Maximum Temperature | Maximum Pressure     | Price Gauge Guard Only       |                              |
|----------------------|--------------------------|---------------|-----------------------|---------------------|----------------------|------------------------------|------------------------------|
|                      |                          |               |                       |                     |                      | *1/4" FNPT Bottom Connection | *1/2" FNPT Bottom Connection |
| AG25A(*)A-PVC- (**)  | 1/4" FNPT                | PVC           | **Viton / EPDM / PTFE | 140°F / 60°C        | 240 PSIG / 16 BARG   | \$ 61.00                     | \$ 67.00                     |
| AG25A(*)A-CPVC- (**) | 1/4" FNPT                | CPVC          | **Viton / EPDM / PTFE | 180°F / 82°C        | 240 PSIG / 16 BARG   | \$ 85.00                     | \$ 94.00                     |
| AG25A(*)A-PP- (**)   | 1/4" FNPT                | Polypropylene | **Viton / EPDM        | 180°F / 82°C        | 240 PSIG / 16 BARG   | \$ 72.00                     | \$ 80.00                     |
| AG25A(*)A-PVDF- (**) | 1/4" FNPT                | PVDF          | **PTFE                | 180°F / 82°C        | 240 PSIG / 16 BARG   | \$122.00                     | \$134.00                     |
| AG25A25A-S/S-S/S     | 1/4" FNPT                | 316 S/S       | 316 S/S               | 500°F / 260°C       | 5800 PSIG / 400 BARG | \$122.00                     | \$134.00                     |
| AG25A(*)A-S/SV-S/S   | 1/4" FNPT                | 316 S/S       | 316 S/S               | 500°F / 260°C       | 5800 PSIG / 400 BARG | \$134.00                     | \$147.00                     |

## Optional List Adders

Glycerin Fill & Gauge Mounting Charge      List Adder    \$18.50 + Cost of Gauge

*See AccuGuard Gauge Product Literature / Price List for Additional Information on Pressure Gauge Product Line*

Contact our office for more information on product availability and applications. Other materials available upon request.

## Typical Installation

The installation below is a typical installation example only. Consult your engineering department for the appropriate installation for your application or call the factory for advice.

