

CHEMICAL RESISTANCE GUIDE



PRIMARY FLUID SYSTEMS INC.

1050 COOKE BLVD., BURLINGTON, ONTARIO L7T 4A8
TEL:(905)333-8743 FAX:(905)333-8746

1-800-776-6580

email: primary@primaryfluid.com

www.primaryfluid.com

INDEX

	PAGE
Disclaimer	3
Material Guide.....	4
Chemical Guide.....	5 – 22
Chemical Formulas	23 - 35

PRIMARY FLUID SYSTEMS INC. DISCLAIMER

Primary Fluid Systems Inc. takes no responsibility for the enclosed information in use with product selection against chemical resistance.

The data in the following tables were obtained from numerous sources in the industry, and believed to be reliable but cannot be guaranteed. The information is intended as a general guide for material selection. The end user should be aware of the fact that actual service conditions will affect the chemical resistance. It is recommended that you cross reference this guide with one or two others to insure consistency.

All data provided is based on testing at 70°F [21°C].

Thermoplastics, Metals and Elastomers have outstanding resistance to a wide range of chemical reagents. Such resistance, however, is a function both of temperatures and concentration, and there are many reagents which can be handled for limited temperature ranges and concentrations. In borderline cases, it will be found that there is limited attack, generally resulting in some swelling due to absorption. There are also many cases where some attack will occur under specific conditions, but for many such applications, the use of plastic will be justified on economic grounds when considered against alternative materials. Resistance is often affected [and frequently reduced] when handling a number of chemicals or compounds containing impurities. For this reason, when specific applications are being considered, it may be worthwhile to carry out tests using the actual product that will be encountered in service.

A*	Excellent – No Effect
B	Good – Minor Effect
C	Fair – Data not Conclusive Testing Recommended
D	Not Recommended
Blank	No Data Available

* Data limited to % concentration at 70°F [21°C].

TEMPERATURE EFFECTS: Thermoplastics and thermosets will decrease in tensile strength as the temperature increases; therefore, the working pressure must be reduced accordingly. The following factors will apply:

NOTE: If the material of the valve you have chosen is rated below the working pressure of your system then you must reconsider your choice. The standard valve top material of construction is PVC and should be taken into temperature consideration. [Other materials of construction are available, consult price list or factory.]

NOTE: When considering working temperature include ambient and potential collective surface temperature [Radiant Heat]

Temperature Correction Factors for Thermoplastics

Operating Temperatures [Factors] (NR = not recommended)

F	C	PVC	CPVC	PP	PVDF
70	21	1.00	1.00	1.00	1.00
80	27	1.00	1.00	1.00	1.00
90	32	1.00	1.00	1.00	1.00
100	38	0.90	1.00	1.00	1.00
110	43	0.83	1.00	0.91	1.00
115	46	0.75	1.00	0.87	1.00
120	49	0.66	1.00	0.83	1.00
125	52	0.58	0.97	0.79	1.00
130	54	0.50	0.95	0.75	1.00
140	60	0.33	0.90	0.66	1.00
150	66	NR	0.80	0.60	0.97
160	71	NR	0.70	0.53	0.93
170	77	NR	0.60	0.43	0.86
180	82	NR	0.50	0.33	0.80
200	93	NR	0.33	NR	0.66
210	99	NR	NR	NR	0.60
240	116	NR	NR	NR	0.40
280	138	NR	NR	NR	0.16

Example:

Working ambient, collective surface temperature and fluid conditions 100°F [38°C]
 Valve chosen TVPR50-PVC set @ **75 PSIG**
 ½" PVC Valve pressure rating 230 PSIG
 (see chart below) Factor at 100°F =0.90
 230 x .90 = 207
 Valve is de-rated to **207 PSIG**
 Therefore: Suitable for application

Maximum Suggested Design Pressure by Valve Size at 73° F 22° C

Valve Size	PVC/CPVC	PP/PVDF
1/2"	230 psig	150 psig
3/4"	230	150
1"	230	150
1 1/2"	200	150
2"	200	150

THERMOPLASTICS & ELASTOMERS

PVC [Polyvinyl Chloride]

The maximum working temperature of PVC valves is **140°F [60°C]**.

CPVC [Corzan™] [Chlorinated Polyvinyl Chloride]

CPVC is similar to PVC in mechanical properties and chemical resistance. It is suitable for applications up to **200°F [95°C]**. CPVC Corzan is a high-quality and durable compound of CPVC, which outlasts most other CPVC compounds. [www.corzancpvc.com] **Available for the majority of our product lines.**

CPVC [Chlorinated Polyvinyl Chloride] * Not Corzan

CPVC is similar to PVC in mechanical properties and chemical resistance. It is suitable for applications up to **200°F [95°C]**. **Available only for Accu-Pulse products.**

PP [Polypropylene]

With a design stress of 1000 psi at **73°F [22°C]**, polypropylene has gained wide acceptance where its resistance to sulfur-bearing compounds is particularly useful in all water disposal lines, crude oil piping and low pressure gas gathering systems. Valves are suitable for service up to **195°F [90°C]**.

PVDF [Kynar®] [Polyvinylidene Fluoride]

The working temperature range of PVDF valves is **-40°F** up to **250°F [-40°C - 120°C]**.

POLYCARBONATE

Unbreakable material has a **290°F [145°C]** heat deflection temperature at 264 psi, absorbs very little moisture and resists acidic solutions.

PTFE® [Fluorocarbons abv. PTFE]

Outstanding resistance to chemical attack by most chemicals and solvents. It is a self-lubricating compound and has a temperature rating of **-20°F - 400°F [-29°C - 204°C]**. [www.dupont-dow.com]

ELASTOMER

VITON® [Fluorocarbon Rubber abv. FPM]

Viton is more expensive than EPDM and is used an alternative for only a few applications. Viton is attacked by caustic [sodium hydroxide] and low molecular weight organics. Has a broad temperature range of **-20°F - 300°F [-29°C - 149°C]** but is not suitable for steam service. [www.dupont-dow.com]

EPDM [Ethylene Propylene Diene Monomer]

This is a synthetic rubber used as the standard seal material for most valves. It is the most economical choice of elastomer and has excellent all round chemical resistance to

acids as well as alkalis, salts, alcohols and oxidizing chemicals. EPDM cannot be used on petroleum oils. The temperature range of EPDM is **-70°F - 300°F [-57°C - 149°C]**.

NEOPRENE [Chloroprene Rubber abv. CR]

This is an economical o-ring alternative where resistance to petroleum products is required. Moderate temperature range of **-20°F - 160°F [-29°C - 71°C]**.

NITRILE [Acrylonitrile-Butadiene Copolymer abv. NBR] [BUNA-N]

Nitrile diaphragms and butterfly valve seats offer high abrasion resistance along with good chemical resistance. Has a moderate temperature range of **-20°F - 180°F [-29°C - 82°C]**

HYPALON® [Chlorosulfonated Polyethylene abv. CSM] Hypalon® chlorosulfonated polyethylene

Hypalon is used as an alternative to EPDM seals when necessary for butterfly and diaphragm valves. Normal temperature range is **-20°F - 200°F [-29°C - 93°C]**. [www.dupont-dow.com]

METAL

316 S/S

316 stainless steel has very good corrosion resistance to a wide range of environments.

ALLOY 20

Has exceptional corrosion resistance in sulfuric acid environments, and is used in a range of applications involving this acid including mixing tanks, heat exchangers, process piping, pickling equipment, pumps, valves, fasteners and fittings.

TITANIUM

Titanium is resistant to dilute sulfuric and hydrochloric acid, most organic acids, most chlorine gas, and chloride solutions.

Titanium is immune to corrosive attacks by saltwater and marine atmosphere and exhibits exceptional resistance to a broad range of corrosive gases, acids and alkalis.

HASTELLOY® C-276

Has outstanding resistance to a wide variety of chemical process environments, including strong oxidizers such as wet chlorine, chlorine gas, and ferric chloride. Resistant to nitric, hydrochloric and sulfuric acids at moderate temperatures. [[see www.haynesintl.com](http://www.haynesintl.com)]

CARBON STEEL

Good resistance to stress corrosion and sulfides. Has high and low temperature strength. Used in applications up to **850°F [454°C]**.

Hastelloy® - Reg. Trade Mark Haynes International, Inc
Corzan™ - Reg. Trade Mark Noveon, Inc

PTFE® - Reg. Trade Mark DuPont Company

Viton® - Reg. Trade Mark DuPont Dow Elastomers
Hypalon® - Reg. Trademark DuPont Dow Elastomer

CHEMICAL	THERMOPLASTIC							ELASTOMER					METAL				
	PVC	CPVC - CORZAN	CPVC - Accu-Pulse only	PP	PVDF - KYNAR	Polycarbonate	PTFE	Viton	EPDM	Neoprene	Nitrile	Hypalon	316 S/S	Alloy 20	Titanium	Hastelloy C	Carbon Steel
Acetaldehyde	D	D	D	B	C	C	A	D	B	C	D	C	A	A	A	A	C
Acetaldehyde, Aqueous,40%	D		D	A	D	D	A	B	A				A		A	A	
Acetamide	D			A	D	D	A	C	A	C	A	C	A	A		A	D
Acetate Solvents, Crude	D	D	D	D	A	D							A			B	
Acetate Solvents, Pure	D		D	D	A	D	A	D	C	D	D	D	A				D
Acetic Acid 05%				A	A	C	A	A	A	B	B	A	A		A	A	D
Acetic Acid 10%	A	A	A	A	A	C	A	D	B	B	B	B	A		B	A	D
Acetic Acid 20%	A	A	B	A	A	C	A	C	B	C	B	B	A	A	A	A	D
Acetic Acid 30%	A			A		C	A	C	A	B	B	B	A		A	A	D
Acetic Acid 50%	A	D	A	A	A	B	A	C	B	C	A	A	A	A	A	A	D
Acetic Acid 60%	A			B	A		A	C	C	C			A		A	A	
Acetic Acid 80%	B	D	B	C	A		A	C	B	C	C	A	A	A	A	A	D
Acetic Acid Glacial 100%	D	D	D	A	A		A	D	B	C	C	C	A	A	B	A	C
Acetic Aldehyde (Acetaledehyde)							A	D	A	B	D	A	B	B		A	D
Acetic Anhydride,		D	C	B	B	N	A	D	C	B	C	A	A	B	B	A	C
Acetic Ester (See Ethyl Acetate)							A	D	B	D	D	D					
Acetic Ether (See Ether Acetate)							A	D	B	D	D	D					
Acetol							A										
Acetone	D	D	D	A	D	D	A	D	A	C	C	B	A	A	A	A	A
Acetonitrile (MethylCyanide)	D			B	A		A	C	A	A	C	B	A	A	A	A	A
Acetophenone	D			A	A		A	D	A	D	C	D	A			B	A
Acetyl Acetone	D		D		D		A	D	A	D	D	D	A				D
Acetyl Benzene							A	D	A	D	D	D	A				
Acetyl Bromide					A		A	A					A				
Acetyl Chloride	D	D	D	A	A		A	C	D	D	C	D	A	A			A
Acetyl Oxide							A	D	B	B	C	D					
Acetyl Propane							A	D	B	D	D	D	A				
Acetylene	B	A	C	A	A		A	A	A	B	A	A	A	A		B	A
Acetylene Dichloride	D						A	A		D	D	D					
Acetylene Tetrachloride	D						A	A	D	D	D	D	D				
Acid Mine Water	A		A	B	A		A	A	C								
Acrylic Acid	C	D	D		A		A										
Acrylic Emulsions				D												A	
Acrylonitrile	D	D	D	A	A	D	A	D	D	C	C	C	A	A		B	A
Adipic Acid Aqueous	A	A	A	A	A	A	A	A	A	A	A	A	A	B	A	A	A
Air	A		A	A	A	A	A	A	A	A	A	A	A				A
Alcohol (See Ethyl Alcohol)							A	B	A	A	A	A	A				A
Alcohol Amyl	C	B	B	A	A		A	A	A	B	A	A	A		A	A	
Alcohol, Allyl	D	D	D	A	A		A	B	A	A	A	A	A	A		A	A
Alcohol, Benzyl,	D		D	A	A		A	C	C	D			A		A	A	
Alcohol, Butyl	C	B	A	A	A		A	A	A	A	A	A	A		A	A	D
Alcohol, Diacetone,	D			C	B		A	D	A	C	C	A	A		A	A	
Alcohol, Ether							A	B	A	C	C	B					
Alcohol, Ethyl	A	A	A	A	A		A	B	A	A	A	A	A		A	A	A
Alcohol, Hexyl,	A			A			A	A	A	B	A		A		A	A	
Alcohol, Isobutyl					A		A	A	A	A	B		A		A	A	
Alcohol, Isopropyl,	A		A	A	B	A	A	A	A	B	B		A		A	A	A
Alcohol, Methyl	A	A	D	A	A	C	A	D	A	A	A	A	A		A	A	A
Alcohol, Octyl,							A		B	B			A		A	A	A
Alcohol, Polyvinyl	A		A	A			A	A	A								
Alcohol, Propargyl	A																
Alcohol, Propyl	A	A	A	A	A		A	A	A	A	A	A	A		A	A	C
Aldehyde							A	D	A	C	D	C					
Alkanes							A	A	D		A	D					
Alkazene							A	B	D	D	D	D					

CHEMICAL	THERMOPLASTIC							ELASTOMER					METAL				
	PVC	CPVC - CORZAN	CPVC - Accu-Pulse only	PP	PVDF - KYNAR	Polycarbonate	PTFE	Viton	EPDM	Neoprene	Nitrile	Hypalon	316 S/S	Alloy 20	Titanium	Hastelloy C	Carbon Steel
Allyl Aldehyde							A	A			B	B					
Allyl Bromide							A	B		D	D	D					A
Allyl Chloride	D	D		B	A		B	B	D	D	D	D	A		A	A	D
Allyl Trichloride							A	A			D	D					
Alum	A	A	A	A	A		A	A	A	A	A	A	A		A	A	C
Alum, Ammonium	D	D	D	A	A		A	A	A	B	A	A					
Alum, Chrome	A	A	A	A	A		A	A		A	A	A	A				
Alum, Potassium	A	A	A	A	A		A	A	A	A	A	A					
Aluminum, Acetate		B					A	C	A	C	B	C	A	A			D
Aluminum, Ammonium Sulfate				A	A		A	A	A	A	B		A	A			C
Aluminum, Bromide							A	A	A	A	A	A					
Aluminum, Chloride	A	A	A	A	A		A	A	A	A	A	A	C	A	C	A	B
Aluminum, Cholrohydroxide							A										
Aluminum, Citrate																	
Aluminum, Fluoride	A	A	A	A	A			A	A	A	A	A	C	B	C	B	
Aluminum, Formate							A	D			D	D					
Aluminum, Hydroxide	A	A	A	A	A	D	A	C	A	A	A		A	A	A		C
Aluminum, Nitrate	A	A	A	A	A		A	B	A	A	A	A	A	A			C
Aluminum, Oxychloride	A		A	A	A			D									
Aluminum, Phosphate							A	A	A	A	A	A	A				
Aluminum, Potassium Sulfate	A		A	A	A		A	A	A	A	A	A	A	A			D
Aluminum, Salts	A			A	A	A	A	A	A	A	A	A	D				
Aluminum, Sulfate	A	A	A	A	A		A	A	A	A	A	A	B		A	A	C
Amber Acid	A		A	A	A		A	A	A								
Amines	C	D			B		A	D	C	C	D	D	A		B	A	
Ammonia 10%	A	D		A			A	A		A	D		A		A	A	
Ammonia, Anhydrous 99.5%	D		D	A	B		A	D	A	A	C	A	A		B	A	A
Ammonia, Aqueous 25%	A	A	A	A	A						C		A				A
Ammonia, Dry Gas	A		A	A	A		A	D	A	A	A	A	A	A	A	A	A
Ammonia, Liquid	D			A	A		A	D	A	A	B	A	A	A		A	A
Ammonia, Nitrate	B		B	A	A		A	A	A	C	B		A				A
Ammonium Phosphate, Monobas	A	A		A	A		A	A	A	A	A		A		A	A	
Ammonium Phosphate, Tribasic	A			A			A	A	A	A	A		A		A	A	
Ammonium, Acetate	A	A	A	A			A	A	A	A	A	A	A	B			C
Ammonium, Alum							A			B	B						
Ammonium, Bichromate							A		A	A	A	A					
Ammonium, Bifloride	A	A	A	A	A		A	A	A	D	B		A	B		B	D
Ammonium, Bisulfide	A				A		A					A					
Ammonium, Carbonate	A	A	A	A	A		A	A	A	A	C	A	B	B	A	B	A
Ammonium, Casenite										A			A				
Ammonium, Chloride	A	A	A	A	A		A	A	A	A	B	A	B	B	A	B	C
Ammonium, Dichromate	A	A					A		A	A	A	A	A				A
Ammonium, Fluoride		A			A		A	C	A	B	B	A	C				C
Ammonium, Fluoride 10%	A		A	A	A		A	A	A	A	A	A	C		B	A	
Ammonium, Fluoride 20%	A			A	A		A	A	A								
Ammonium, Fluoride 25%	D		D	A	A		A						C				C
Ammonium, Hydroxide	A	C	D	A	A	D	A	B	A	A	A	A	A		A	A	C
Ammonium, Metaphosphate	A		A	A	A		A	A	A	B	A	B					
Ammonium, Nitrate	B	A	B	A	A		A	A	A	A	A	A	A	A		A	D
Ammonium, Oxalate	A			A		A	A			A	A		A			A	D
Ammonium, Persulfate	A	A	A	C	A		A	C	B	A	C	A	A	A	A	A	D
Ammonium, Phosphate	A	A	A	A	A		A	A	A	A	A	A	C				D
Ammonium, Phosphate Di Basic	A		A	A	A		A	A	A	A	A		A		A	A	D
Ammonium, Phosphate Monobasic	C		A	A	A		A	A	A	A	A	A	C	A	A	A	D
Ammonium, Phosphate Tribasic	C		A	A	A		A	A	A	A	A		A		A	A	D

CHEMICAL	THERMOPLASTIC							ELASTOMER					METAL				
	PVC	CPVC - CORZAN	CPVC - Accu-Pulse only	PP	PVDF - KYNAR	Polycarbonate	PTFE	Viton	EPDM	Neoprene	Nitrile	Hypalon	316 S/S	Alloy 20	Titanium	Hastelloy C	Carbon Steel
Ammonium, Salts	A			A	A	C	A	C	A	A	A	A	D				
Ammonium, Sulfate	A	A	A	A	A		A	C	A	A	A	A	B	A	A	A	D
Ammonium, Sulfide	A	A	A	A	A		A	C	A	A	A		B				C
Ammonium, Thiocyanate	A	A	A	A			A	A	A	A	A	A	A	A		A	C
Ammonium, Thiosulfate							A	A	A	A	A	A			A		D
Amyl Acetate	D	D	D	D	C	D	A	D	A	D	C	D	A		D	A	C
Amyl Alcohol (See Alcohol Amyl)	C	C	B	A			A	A	A	A	A	A	A	A	C	C	B
Amyl Borate					A		A	A	D	A	A	A					
Amyl Bromide							A	B	D	D	D	D					
Amyl Chloride	D	D	D	D	A	D	A	A	D	D	D	C	B	A	C	A	A
Aniline	D	D	D	A	C	C	A	B	A	D	D	A	A	A	B	C	C
Aniline Chlorohydrate	D															A	
Aniline Hydrochloride	D	D	D	D	A		A	B	B	D	C	C	D		A	D	C
Anthraquinone Sulfonic Acid	A		A		A	A		A									
Antichlor							A	A	A	A	A	A					
Anti-Freeze	A			A			A	A	A	A	A		A			A	A
Antimony Chloride				A	A		A	A		D	D						
Antimony Pentachloride							A			D	D	D					
Antimony Trichloride	A	A		A	A		A	A	A	A	A	A	D	A			C
Aqua Regia 80% HCL, 20% Nitric	D	C	D	C	A		A	C	C	C	C	B	D	B	B	C	D
Argon							A	A	A	D	C	D	A				A
Arochlor 1248							A	A	C	D	D		C				C
Aromatic Hydrocarbons	D		D					A	D	D	D		A				C
Arsenic Acid	A	A	A	A	A		A	A	A	A	A	A	B	A		A	D
Arsenous Acid	C				A		A		A		C		A				D
Aryl Sulfonic Acid	D		D	D	C						A						
Asphalt	C		D	A	A		A	A	D	C	B	C	A	A		A	A
Aviation Fuel(115-145 OCT)							A	A	D		C		A				A
Aviation Turbine Fuel							A										
Baking Soda (See Sodium Bicarbonate)							A	A	A	A	A	A				A	
Barium Acetate																	
Barium Carbonate	A	A	A	A	A		A	A	A	A	A	A	B	A	A	A	B
Barium Chloride	A	A	A	A	A		A	A	A	A	A	A	B	A	A	A	C
Barium Cyanide	D						A	A		A	A		A				C
Barium Hydrate							A	A	A	A	A	A	A				
Barium Hydroxide	A	A	A	A	A		A	A	A	A	A	A	A	A	B	B	C
Barium Nitrate	A	A	A	A			A	A	A	A	A	A	A	A	A		A
Barium Salts	A			A	A		A	A	A	A	A	A	A				
Barium Sulfate	A	A	A	A	A		A	A	A	A	A	A	A	A	A	A	C
Barium Sulfide	A	A	A	A	A		A	A	A	A	A	A	A	A			C
Beer	A	A	A	A	A		A	A	A	A	C	A	A	A	A	A	C
Beet Sugar Liquid	A		A	A			A	A	A	A	A	A	A				A
Beet Sugar Liquors	A	A	A	A	A		A	A	A	A	A	A	A	A			B
Benzaldehyde	D	D	D	C	C	D	A	C	A	D	D	C	A	A	A	A	A
Benzalkonium Chloride	A																
Benzene [Benzol]	D	D	D	C	B	D	A	B	D	C	C	D	A	A	A	B	A
Benzene Sulfonic Acid	D	A	D	B	B		A	A	D	A	C	A	A	A			C
Benzene Sulfonic Acid 10%	D		D	D	B		A	A									
Benzil Chloride	B	D		A	A		A	A	D	D	D	D					
Benzoic Acid	A		A	A	A	C	A	A	B	C	D	A	B	A	A	A	D
Benzol (See Benzene)																	
Benzyl Alcohol (See Alcohol Benzyl)		D					A	A	C	D	C	C	A	A			B
Benzyl Benzoate							A	A	C	D	D	D	C			B	C
Benzyl Chloride		D		A	D		A	D	D	D	D	D	C				A
Bismuth Carbonate	A	A	A	A	A		A	A	A	A	A	A					

CHEMICAL	THERMOPLASTIC							ELASTOMER					METAL				
	PVC	CPVC - CORZAN	CPVC - Accu-Pulse only	PP	PVDF - KYNAR	Polycarbonate	PTFE	Viton	EPDM	Neoprene	Nitrile	Hypalon	316 S/S	Alloy 20	Titanium	Hastelloy C	Carbon Steel
Black Liquor	A	A	A	A	A		A	A	B	A	A	A	A	A			A
Bleach (See Sodium Hypochlorite)	A	A	A	A	A		A	A	A	D	D	A				A	
Borax	A	A	A	A	A		A	A	A	A	A	A	A	A	A	A	C
Boric Acid	A	A	A	A	A		A	A	A	A	A	A	B	A	A	A	D
Brake Fluid							A	D	A	B	C	B	A	A		A	A
Brewery Slop							A	A		A	A		A				A
Brine	A	A	A	A	A		A	A	A	A	A	A	A	A		A	C
Brine Acid	A	A	A	A	A		A	A	A		A					A	
Bromic Acid	A		A	D	A		A	A	B							A	
Bromine Dry							A	A	D	D	D	D	D				D
Bromine Gas	C			D	A		A	A	D	C	D	A	C	A		A	C
Bromine Liquid	D	D	D	D	A		A	A	D	D	D	A	D	C		A	D
Bromine Water	D	D	C	D	A		A	A	D	C	C	A	D		A	A	D
Bromobenzene	D	D		D		D	A	A	D	D	C	D	A				C
Bromotoluene	D	D		D			A	C	C	C	D	C	A				A
Butadiene Gas	B	A	A	D	A	D	A	A	D	D	D	B	A	A		A	A
Butane	A	A	A	A	A		A	A	D	A	A	A	A	A		B	A
Butanediol (Butylene Glycol)	A		B		A			A	D								
Butanol (See Alcohol, Butyl)	C	C		A		C	A	A	A	A	A	A	A	A		A	A
Butter							A	A	A	B	A	B	A				D
Buttermilk							A	A	A	A	A		A				D
Butyl Acetate	D	D	D	C	B	D	A	D	B	D	C	C	C			B	A
Butyl Acrylate Pure	D		D	D	A		A	D	A								
Butyl Acrylate Saturated	C			C	A	A	A	D	A	D	A		A				C
Butyl Amine	D		D	D	B		A	D	D	D	D	C					
Butyl Benzoate							A	A	A	D	D	D					
Butyl Bromide					A		A	B		D	D						
Butyl Butyrate (Butyl Butanoate)							A	C	A	D	D	D					
Butyl Carbitol		D					A	A	A	B	C	A					
Butyl Cellosolve (Ethylene Glycol Monobutyl Ether)	A	D	D		A		A	D	B	C	C	B	A	A			
Butyl Chloride (Chlorobutane)					A		A	A	C	C	D	C	B	B		B	B
Butyl Diol	B	A	A	A	A		A	A	A								
Butyl Ether	D		D	D	A		A	D	D	C	B	C					
Butyl Formate							A			D	D						
Butyl Hydrate							A	A	B	A	A	A					
Butyl Hydride (See Butane)							A	A	D	A	A	B					
Butyl Hydroxide							A	A	B	A	A	A					
Butyl Mercaptan	D				A		A						A				
Butyl Phenol	C		A	A	A					C		B					
Butyl Phthalate [Dibutyl Phthalate]	D		D	A	A		A	C	B		D	D					
Butyl Stearate					A		A	A	B	A	B	D	A	A			C
Butylbenzene (Phenylbutane)							A	A			D	D					
Butylene (Liquified Petroleum Gas)	A		A	D	A		A	A	D	C	B	C	A				A
Butyraldehyde							A	D	B	D	D	C				A	
Butyric Acid	D	D	B	A	A	D	A	B	B	C	D	C	B	A	A	A	D
Cadmium Cyanide	A		A					A		A							
Cadmium Salts				A	A		A	A									
Caffeine Citrate	A				A		A										
Calamine							A	A		B	B	A					
Calcium Acetate	A		A	A	A		A	D	A	C	B	B	C				C
Calcium Bisulfide	A	A	A	A	A		A	A	D	A	A	C	B	A	A	A	
Calcium Bisulfite	A	A	A	A	A		A	A	D	A	A	A	A				D
Calcium Carbonate	A	A	A	A	A		A	A	A	A	A	A	A	A	A	A	C
Calcium Chlorate	A	A	A	A	A		A	A	A	A	A	A	A	A		B	C

CHEMICAL	THERMOPLASTIC							ELASTOMER					METAL				
	PVC	CPVC - CORZAN	CPVC - Accu-Pulse only	PP	PVDF - KYNAR	Polycarbonate	PTFE	Viton	EPDM	Neoprene	Nitrile	Hypalon	316 S/S	Alloy 20	Titanium	Hastelloy C	Carbon Steel
Calcium Chloride	A	A	A	A	A		A	A	A	A	A	B	A	A	A	C	
Calcium Cyanide							A		A	A	A					A	
Calcium Hydroxide	A	A	A	A	A	A	A	A	A	A	A	A	A	A	A	C	
Calcium Hypochloride							A	A	A	D	D						
Calcium Hypochlorite	A	A	A	A	A	D	A	A	A	C	C	B	B	B	B	D	
Calcium Nitrate	A	A	A	A	A		A	A	A	A	B	A	A			D	
Calcium Oxide	A	A			A		A		A	A	A	A	A			A	
Calcium Phosphate							A	A	A	C	A	A	B			C	
Calcium Sulfate	A	A	A	A	A		A	A	A	A	A	A	A	A	B	B	
Calcium Sulfide	A		A	A	A		A	A	A	A	A	A				C	
Calcium Thiosulfate							A	A	A	B	A						
Calgon (Sodium Hexametaphosphate)				C	A		A	A	A	A		A					
Cane Sugar Liquors	A	A	A	A	A		A	A	A	A	A	A			A	A	
Caprylic Acid (Octanic Acid)					A		A			C	B	A	A		A	A	
Carbinol (See Alcohol, Methyl)							A	D	A	A	A	A		B	A		
Carbolic Acid (See Phenol)			A		A		A	A	C	D	C	D		B	A	D	
Carbon Bisulfide	D		D	D	A		A	A	D	D	D	D	B		A	A	
Carbon Dioxide (Wet or Dry)	A		A	A	A		A	A	B	A	A	A	A	A	A	A	
Carbon Disulfide	D	D	D	D	A	D	A	A	D	D	C	D	A	A	A	A	
Carbon Monoxide	A	A	A	A	A		A	A	A	A	A	A	A		A	A	
Carbon Tetrachloride	D	D	D	C	A	C	A	B	D	D	C	C	A	A	A	B	
Carbonic Acid	A	A	A	A	A		A	A	A	A	B	A	B	A	A	D	
Casein					A		A	A	A	A	A	A	B				
Castor Oil	A	C	C	A	A		A	A	A	A	A	A	A		A	A	
Catsup	A		A	A			A	A	A	C	A		A		A	D	
Caustic Lime (Calcium Hydroxide)							A	B	A	A	A	A			A		
Caustic Potash (Potassium Hydroxide)	A	A	A	A	A		A	D	A	B	A	A					
Caustic Soda (Sodium Hydroxide)	A	A	A	A	A		A	B	A	B	C	A					
Cellosolve (See Butyl Cellosolve)	B	D		B	A		A	C	B	D	C	A	A			A	
Chloral Hydrate (Knockout Drops)	A	A	A	A	A			A		B	C	A	C				
Chlorasetic Acid	A			D			A	D	B	D	D		D		A	D	
Chloric Acid 10%	A	A		D	A		A			D	D	A	D			D	
Chloric Acid 20%	A		A	D	A		A						D	A	A	C	
Chlorinated Glue								A	B	D	C		A			D	
Chlorine Dioxide	A		A	C	A		A	A	D	D	D		D			D	
Chlorine Dry	D	D		C	A	C	A	C	B	C	D	C	B		D	D	
Chlorine Gas Dry	D	D	D	D	A		A	B	D	C	C	C	B	A	A	D	
Chlorine Gas Wet	D	D	D	D	A		A	C	D	D	C	D	D	C	A	D	
Chlorine Liquid	D	D	D	D	A		C		C	C	C	B	C		A	C	
Chlorine Water	A	A	A	C	A		A	A	B	C	C	B	D	A	A	C	
Chlorosulfonic Acid	D	B	D	D	C		A	D	D	D	D	C	D	B	A	C	
Chlorox Bleach 5.5%	A		A	C	A		A	A	B	D	C	B	A		D	D	
Chocolate Syrup				A			A	A	A	A	A		A		B	D	
Chresylic Acid 50%	A				B			A		D	D		A		B		
Chrome Alum (Chr. Potass. Sulf.)	A	A	A	A	A		A	A	A	A	A		A			D	
Chromic Acid 05%	A			A	A	C	A	A	A	D	D		A		A	D	
Chromic Acid 10%	A	D	A	A	A		A	A	B	D	D	A	A	A	A	C	
Chromic Acid 20%	B		B	D	A		A	B	B	C	C	A	B		A		
Chromic Acid 30%	B	D	B	A	A		A	A	C	D	D	A	B	A	A	C	
Chromic Acid 50%	D	D	D	B	A	C	A	A	C	D	D	A	B	B	A	D	
Chromium Alum	A		A	A	A		A	A	A	A	A		A			D	
Citric Acid	A	A	A	A	A	A	A	A	A	A	B	A	A		A	D	
Citric Oils		D		A			A	A	B	D	A	D	A			D	
Cobalt Chloride							A	A	A	A	A	A					
Coconut Oil	A	C	A	A	A		A	A	B	B	A	B	A	A		B	

CHEMICAL	THERMOPLASTIC							ELASTOMER					METAL				
	PVC	CPVC - CORZAN	CPVC - Accu-Pulse only	PP	PVDF - KYNAR	Polycarbonate	PTFE	Viton	EPDM	Neoprene	Nitrile	Hypalon	316 S/S	Alloy 20	Titanium	Hastelloy C	Carbon Steel
Cod Liver Oil							A	A	A	B	B	B	A				
Coffee			A	A			A	A	A	A	A	A	A	A			C
Coke Oven Gas	D		A	A	A		A	A	A	D	D		A				B
Cola Concentrates				A													
Copper Acetate	A	A	A	A	A		A	D	A	B	B	C	A	A		A	C
Copper Borofluoride	A		A	A	A		A	A	A								
Copper Carbonate	A	A	A	A	A		A	A	A		D		A	A			
Copper Chloride	A	A	A	A	A		A	A	A	A	A	A	C	A	A	A	D
Copper Cyanide	A	A	A	A	A		A	A	A	A	A	A	A	A	B	A	D
Copper Fluoborate	A						A	A		A	B		D			A	D
Copper Fluoride	A	A	A	A	A		A	A	A	A	B	A					
Copper Nitrate	A	A	A	A	A		A	A	A	A	A	A	A	A		A	D
Copper Salts	A		A	A	A		A	A	A	A	A	A					
Copper Sulfate	A	A	A	A	A		A	B	A	A	A	A	A	A	A	A	D
Copper Sulfate 5%	A			A			A	A		A	A		A		A	A	D
Corn Oil	A	D	A	A			A	A	B	C	A	C	A	A			A
Corn Syrup	A	A	A	A	A		A	A	B	A	A	A					
Cottonseed Oil	A	D	A	A	A		A	A	B	C	A	A	A	A			A
Cream	A	A	A	A			A	A		B	A		A				D
Creosol	D	D	D	D	A	D	A	A	D	D	D	B	A				A
Creosote	D	D	D				A	A	D	D	B	A	A	A		A	A
Cresols	D	D	D	C	A		A	A	D	D	D	C	A				A
Cresylic Acid	C	B	C	D	A		A	A	D	D	D	C	A	A	A	B	B
Croton Aldehyde	D	D	D	A	C		A	A	B	A	D		A				A
Crude Oil	A	A	A	A	A		A	A	D	D	D		A	A			B
Cryolite	B		B	A	A		A	A	A	A	B						
Cupric Cyanide (See Copper Cyanide)																	
Cupric Fluoride	A		A	A	A		A	A	A								
Cupric Nitrate							A	A	A	A	A	A					
Cupric Salts	A			A	A		A	A	A	D			D				
Cupric Sulfate (See Copper Sulfate)	A	A	A	A	A		A	A	A		A						
Cutting Oil							A	A	D	B	A	B	A				B
Cyanic Acid (Isocyanic Acid)							A		A	A	A	A	A				
Cyclohexane	D	D	D	C	A	C	A	A	D	D	C	C	A	A	A	A	A
Cyclohexanol	D	D	D	A	A		A	A	B	C	B	C	A	A			C
Cyclohexanone	D	D	D	C	C		A	D	C	D	C	C	A	A		A	C
Decalin	D		D	B	A	D	A	A	D	D	D	D					
Decanal							A	D	D		D	D					
Decane					A		A	A	D	D	B	C					
Detergents	A	C	A	A	A		A	A	A	A	A		A				
Detergents, Heavy Duty	A		A	A	A		A		A	A	A	A	A	A			A
Developers							A	A	C	A	A		C		A	A	D
Dextrin	A	A	A	A	A		A	A	A	A	A		A	A			B
Dextrose	A	A	A	A	A		A	A	A	A	A	A	A	A			D
Diacetone Alcohol	D	D	D	A	B		A	D	A	C	D	B	A	A		A	A
Diallyl Phthalate																	
Diazo Salts	A	A	A	A	A												
Dibenzyl Ether					A		A	D	C	D	D		A				A
Dibutyl Amine					A		A	C	D	D	C						A
Dibutyl Ether					A		A	C	C	D	C	C	A				A
Dibutyl Phthalate [see Butyl Phthalate]	D	D	D	A	A		A	B	A	D	D	D	A	A			A
Dibutyl Sebacate	B				A		A	C	B	D	D	D	A				A
Dicalcium Phosphate																	
Dichlorethane	D				C		A	C		D			A			A	A
Dichloro Benzene	D	D	D		C		A	B	D	C	D	C	A	A			

CHEMICAL	THERMOPLASTIC							ELASTOMER					METAL				
	PVC	CPVC - CORZAN	CPVC - Accu-Pulse only	PP	PVDF - KYNAR	Polycarbonate	PTFE	Viton	EPDM	Neoprene	Nitrile	Hypalon	316 S/S	Alloy 20	Titanium	Hastelloy C	Carbon Steel
Dichlorobenzene	D	D			A		A	A	D	D	D	D					
Dichloroethylene [acetylene dichloride]	D	D		A	A		A	A	D	D	D	D	B				
Dichloroisopropyl Ether					A			D	D	D	D						
Dichloromethane							A	B	D	D	D	D					
Diethyl Phthalate																	
Diesel Fuel [gas oil]	A	A	A	B	A		A	A	D	D	A	D	A	A			A
Diethanolamine								D	C	D	D		A				A
Diethyl Cellosolve					A				D	A	C		A	A			
Diethyl Ether [ethers]	D	D	D	D	A	D	A	C	C	D	D	C	A				A
Diethyl Ketone [acetone]							A	D	B	D	D	D					
Diethyl Oxide							A	D	D	C	B	C					
Diethylamine	D	D	D	A	C		A	D	B		B	C	A				A
Diethylbenzene	D			D		D	A	A	D	D	D	D	A				
Diethylene Glycol [carbitol]	A	A	A	A	A	B	A	A	C	A	A		A		A		
Diethylenetriamine					A		A		C	D	B	C					
Diglycolic Acid	A	A	A	A	A		A	A	A			A	A				
Diisobutyl Ketone					A		A	D	D	D	D		A				A
Diisobutylene					A		A	A	D	D	C	A	A				C
Diisooctyl Phthalate							A	B	B		D	D					
Diisopropyl Ketone					B		A	D	B		D		A				A
Dimethyl Amine	D	D	D	A	B		A	D	C	C	B	C	A	A			
Dimethyl Benzene							A	A	D	D	D	D					
Dimethyl Ether							A	B	B	C	B	C					
Dimethyl Formamide	D	D	D	A	A		A	C	B	C	B	A	A	A			B
Dimethyl Ketone							A	D	A	C	D	C					
Dimethyl Phthalate	D	D		D	B		A	B	B	D	D	D	A				
Dimethylamine	D	D	D	A	D			D	D								
Dioctyl Phthalate	D	D	D	D	A		A	A	A	D	D	D	A				A
Dioxane	D	D	D	B	D		A	D	B	D	D	D	A		A	A	A
Dioxolane					D			D	D	D	D						
Diphenyl				D			A	A	D	D	D	D	C				C
Diphenyl Ether (See Diphenyl Oxide)																	
Diphenyl Oxide	D	B			B			A	D	D	D		A				A
Dipropylene Glycol	B			A	B		A	A	C		A	A	A				
Disodium Methylarsonate																	
Disodium Phosphate	A	A	A	A	A		A		A		A	A	A	A			
Distilled Water	A	A	A	A	A												
Divinylbenzene	D		D	D	D		A	A			D						
Dolomite							A	A	B	A	A	A					
Dowtherm (Ethylene Glycol)										D			A				B
Dry Cleaning Solvents							A	A	D	D	A	D	A		A		A
Epichlorohydrin	D	D	D	A	A		A	D	D	D	D		A		A		C
Epsom Salts [magnesium sulfate]	A			A	A		A	A	A	A	A	A	A		A	B	A
Esters	D	D	D	C	A		A										
Ethane	D	D		C			A	A	D	C	A	B	A		A		A
Ethanol (See Alcohol, Ethyl)																	
Ethanolamine	D		D	A	D		A	D	A	D	B		A				A
Ethers	D	D	D	D	A	D	A	C	C	D	D	D	A	A		B	B
Ethyl Acetate	D	D	D	A	A	D	A	D	B	D	D	D	A	A		A	A
Ethyl Acetoacetate	D	D	D	D	A		A	D	A	D	D						A
Ethyl Acrylate	D	D	D	D	A		A	D	B	D	D	D	A	A		A	A
Ethyl Alcohol	A	C	A	A	A	C	A	B	A	A	A	A	A	A	A	A	A
Ethyl Benzene	D	D		D	A	D	A	A	D	D	D	D	A	A		A	B
Ethyl Bromide		D		D				A	D	D	C		A				A
Ethyl Butyrate	D			B		D	A	D	D	D	D		A				A

CHEMICAL	THERMOPLASTIC							ELASTOMER					METAL				
	PVC	CPVC - CORZAN	CPVC - Accu-Pulse only	PP	PVDF - KYNAR	Polycarbonate	PTFE	Viton	EPDM	Neoprene	Nitrile	Hypalon	316 S/S	Alloy 20	Titanium	Hastelloy C	Carbon Steel
Ethyl Cellosolve								D	A	D	D						
Ethyl Chloride	D	D	D	D	A	D	A	A	A	C	B	A	A	A	A	A	A
Ethyl Ether	D	D	D	C	A		A	C	D	D	D	C	A				A
Ethyl Formate	D	D		D	A		A	B	B	B	D	C	A	A			A
Ethyl Hexanol					A		A	A	A	B	B	A	A				A
Ethyl Sulfate							A	D		A	C	D	D				C
Ethylcellulose										A		A					
Ethylene Bromide	D	D	D	B	A		A	B	C	D	D	D	A	A	B	A	A
Ethylene Chloride	D	D	D	C	A	D	A	A	C	D	D	C	A	A	B	B	D
Ethylene Chlorohydrin	D	D	D	A	A		A	A	A	A	D	A	C				C
Ethylene Diamine	D	D	D	A	C		A	D	A	A	A	B	A	B			A
Ethylene Dichloride	D	D	D	D	A		A	A	D	D	D	C	A	A	A	B	
Ethylene Glycol	A	C	C	A	A	C	A	A	A	A	A		A	A		A	A
Ethylene Oxide	D	D	D	C	A	D	A	D	D	D	D	D	A	A		A	A
Extrin	A		A	A	A		A	A	A								
Fatty Acids	A	A	B	A	A		A	A	D	B	B	C	A	A	A	A	D
Ferric Acetate (Iron Acetate, Basic)	B						A	D			D	A					
Ferric Chloride, Anhydrous	A	A	A	A	A		A	A	A	B	B	B	D		A	B	D
Ferric Hydroxide	A	A	A	A			A	C	A	A	A	A	A	A			
Ferric Nitrate	A	A	A	A	A		A	A	A	A	A	A	A	A	A	A	D
Ferric Sulfate	A	A	A	A	A		A	A	A	A	A	A	B	A	A	A	D
Ferrous Chloride	A	A	A	A	A		A	A	A	A	A	B	D	C	A	B	D
Ferrous Nitrate	A		A	A	A		A	A	B	A	A	A	A	A			
Ferrous Sulfate	A	A	A	A	A		A	A	A	A	A	A	A	A	A	A	D
Fish Solubles	A	A	A	B	A												
Fluoboric Acid (Fluoro Boric Acid)	A	A	A	A	A		A	A	A	A	A	A	B	A	D	A	A
Fluorine Gas (Wet)	A	D	A	D	A		A	A	A	D	D	D	A	A			C
Fluorine, Liquid	C			D	A		B	B	C	D	D	D			D	A	
Fluosilicic Acid [hydrofluosilicic Acid]	A	A	A	A	A		A	A	A	A	A	A	B	A	D	B	D
Formaldehyde	D	D	A	A	A	A	A	B	B	A	B	A	A	A	A	B	A
Formaldehyde 35%	A		A	A	A		A	A	A	A	C	A	A	A		A	B
Formaldehyde 50%	A		A	A	A		A	B	D	A	C	C	A	A		A	B
Formic Acid	A	A	A	A	A	C	A	D	A	A	C	A	B	A	C	A	D
Freon 11 (MF)	D	C	A	A	A		A	B	D	D	B	A	A	A			B
Freon 113 (TF)	A	C			A		A	B	D	A	A	A	A	A			B
Freon 114	A	C			A		A	A	C	A	A	A	A	A			B
Freon 12	C	C	A	B	A		A	B	A	A	B	A	A	A			A
Freon 12 (Wet)	B	C		A			A	A	B	B	A		D				
Freon 22	D	C	D	A	A		A	D	B	A	D	A	A	A		A	A
Freon TF	B	C	B	D			A	B	D	A	A		A				A
Fructose	A	A	A	A	A		A	A	A	A	A	A	A	A			
Fruit Juice	A	A	A	A	A		A	A	A	A	A	A	A				D
Fruit Pulp	A		A	A	A		A										
Fuel Oil	B			B	A	C	A	A	D	B	A	A	A		A	A	A
Fumaric Acid (Boletic Acid)							A	A		B	A	B					A
Furan							A	D	D	D	D						
Furfural (Ant Oil)(Bran Oil)	D	D	D	D	B		A	D	C	D	D	A	A	A		A	A
Furfuryl Alcohol					B		A	D	C	D	D		A				A
Gallic Acid	A	A	A	A	A		A	A	A	A	A	A	A	A		A	D
Gas Natural	A	A	A	A	A		A	D		A			A				B
Gasoline, Leaded	A	A	D	D	A		A	B	D	B	A	A	A	A	D	A	A
Gasoline, Sour	A		B	D	A	C	A	A	D	C	A	D	A	A	D	A	A
Gasoline, Unleaded	C	D	D	D	A		A	B	D	B	A	A	A	A	D	A	A
Gelatin	A	A	A	A	A		A	A	A	A	A	A	A	A		A	D
Gin	A		A	A	A		A	A	A				A				

CHEMICAL	THERMOPLASTIC							ELASTOMER					METAL				
	PVC	CPVC - CORZAN	CPVC - Accu-Pulse only	PP	PVDF - KYNAR	Polycarbonate	PTFE	Viton	EPDM	Neoprene	Nitrile	Hypalon	316 S/S	Alloy 20	Titanium	Hastelloy C	Carbon Steel
Gluconic Acid 50%																	
Glucose	A	A	A	A	A	A	A	A	A	A	A	A	A		A	A	
Glue	A	A	A	A	A		A	A	B	A	A	A	A	A	A	A	A
Glycerin (See Glycerol)	A	A	A	A	A	A	A	A	A	A	A	A	A	A	A	A	A
Glycerol (Glycyl Alcohol)	A		A	A	A		A	A	A	A	A	A			A		
Glycolic Acid (See Hydroxyacetic Acid)	A	A	A	A	A		A	A	A	A	A	C	A	A		B	C
Glycols	A	A	A	A	A		A	A	A	A	A		B				B
Glyoxal							A		A	C	C	A	A				C
Gold Monocyanide					A		D	A		A	A	A					D
Grape Juice	A		A		A		A	A		A	A	A					D
Grape Sugar	A		A	A	A		A	A	A	A	A						
Grease	A			A	A		A	A	D	B	A	C	A	A		A	A
Green Liquor	A	A	A	A	A		A	A	A	B	B	A	A	A			D
Helium				A			A	A	A	A	A	A	D				D
Heptane	A	C	A	B	A		A	A	D	B	A	A	A	A		A	A
Hexane	D	A	A	B	A	D	A	A	D	B	A	A	A	A		A	A
Hexene							A	A	D	B	A	C					
Hexyl Alcohol (Hexanol)	A		A	A	A		A	A	B	B	A	A	A	A		A	A
Honey	A			A	A		A	A		A	A		A				A
Hydraulic Oil	A			D	A		A	A	D	B	A	A	A	A			A
Hydraulic Oil (Synthetic)	A			D	A		A	A	A	C	C		A				A
Hydrazine	D	D	D	D	A		A	D	A	C	C	A	A	A			D
Hydrobromic Acid	A		A	A	A		A	A	A	D	D		D		A	A	D
Hydrobromic Acid 20%	A		A	A	A		A	A	A	C	D		D	C	A	A	C
Hydrobromic Acid 50%	A		A	B	A		A	A	A	B	D	A	C	C	D	B	C
Hydrochloric Acid (Dry Gas)	A			A	A	C	A	A	A	C	D		D			A	D
Hydrochloric Acid 10%	A		A	A	A		A	A	A	A	B		D		C	A	
Hydrochloric Acid 20%	A		A	A	A		A	A	A	B	B	A	D	B	C	A	C
Hydrochloric Acid 25%	A	A	A	A	A		A	A	A	B	C	A	D				
Hydrochloric Acid 37% (Muriatic Acid)	A	A		A	A	D	A	A	C	C	C		D	B	C	B	D
Hydrocyanic Acid [prussic acid]	A	A	A	A	A		A	A	A	C	B	A	A		A	A	D
Hydrocyanic Acid 10% [formonitrile]	A		A	A	A		A	A	A	B	B	A	D	A		A	C
Hydrofluoric Acid 10%	A	A	A	A	A		A	A	A	A	B	A					
Hydrofluoric Acid 20%	A			A			A	A	A	C	D	C	D		D	B	
Hydrofluoric Acid 30%	A	D	A	A	A		A	A	A	A	C	A	C	B		A	C
Hydrofluoric Acid 40%	B		D	A	A		A	A	A	C	C	A	C	B		A	C
Hydrofluoric Acid 50%	D	C	D	A	B		A	A	A	B	C	A	D	B	D	A	C
Hydrofluoric Acid 65%	A			A	A	D	A	A	B	C	D	A	D			A	D
Hydrofluoric Acid 75%	D		C	A	A		A	A	D	D	D	A	D			A	D
Hydrofluosilicic Acid	D	B	D	A	A		A	A	A	C	A	A	D	A	A	C	D
Hydrofluosilicic Acid 20%	A			A			A	A	A	B	B		D		D	B	
Hydrogen	A	A	A	A	A		A	A	A	A	A	A	A	A		A	A
Hydrogen Chloride Gas Dry	A			A	A				A								
Hydrogen Cyanide [Hydrocyanic Acid]	A	A	A	A	A		A	A	A	B	B	A	A	A			C
Hydrogen Fluoride	D	D	D	A	A		A		A		C		A	A		A	A
Hydrogen Peroxide	A	A		A	A		A	A	B	C	C	B	B		B	A	D
Hydrogen Peroxide 05%	A		D	A	A		A	A	A				B				D
Hydrogen Peroxide 10%	A		A	A	A		A			D	A		C		C	A	
Hydrogen Peroxide 30%	A		D	C			A	A	B	D	D	C	B		B	A	
Hydrogen Peroxide 50%	B	A	B	A	A		A	A	C	D	D	A	A	A			B
Hydrogen Peroxide 90%	D		D	B	A	A	A	B	C	D	D	A	A	A	B	B	D
Hydrogen Phosphide (See Phosphine)	D		A	A	A		A				C						
Hydrogen Sulfide	A	A		A	A		A	A	A	A			A			B	
Hydrogen Sulfide (Aq. Sol.)	A	A	A	A	A		A	C	A	C	C	A	A		A	A	D
Hydrogen Sulfide (Dry)	A	A	A	A	A		A	A	A	A	A	A	A	A		A	B

CHEMICAL	THERMOPLASTIC							ELASTOMER					METAL				
	PVC	CPVC - CORZAN	CPVC - Accu-Pulse only	PP	PVDF - KYNAR	Polycarbonate	PTFE	Viton	EPDM	Neoprene	Nitrile	Hypalon	316 S/S	Alloy 20	Titanium	Hastelloy C	Carbon Steel
Hydroquinone	A	A		A	A		A	A	A	D	D	A	A	A		A	A
Hydroxyacetic Acid (Glycolic Acid)	D		A		A		A	A		A	A		C		A		C
Hydroxyacetic Acid 70%	A		A					A	A	A	A				B		
Hydroxylamine Sulfate	A		A	A	A				A	A							
Hypochlorous Acid	A	A	A	A	A		A	B	B	D	D	D	D		B	B	D
Ink				A	A		A	A	A	A	A		A	A			D
Iodine Solution	D	A	A	A	A		A	A	A	C	C	A	D	B	A	A	D
Isobutyl Alcohol (See Alcohol, Isobutyl)	A			A	A	C	A	A	A	A	C		A	A	A	B	
Isooctane [trimethylpentane]	A		A	A	A		A	A	D	A	A	A	A	A		A	A
Isophorone	D		D				A	D	D	D	D		C				C
Isopropyl Acetate	D			B			A	D	B	D	D		B	A			A
Isopropyl Alcohol (See Alcohol, Isopropanol)	A	A		A	A	A	A	A	A	A	A	A	A	A	A		B
Isopropyl Ether	D	D	D	B	A		A	D	D	D	B	C	A	A		A	A
Jet Fuel JP-3	A	A		A	A		A	A	D	C	A	C	A	A		A	A
Jet Fuel JP-4	A		A	C	A		A	A	D	D	A	C	A	A		A	A
Jet Fuel JP-5	A		A	C	A		A	A	D	C	A	C	A	A		A	A
Kerosene	A	A	A	A	A	D	A	A	D	D	A	C	A	A	A	A	A
Ketones	D	D	D	A	A		A	D	C	D	D	C	A	A	A	A	A
Kraft Liquor	A	A	A	A	A								A	A			C
Lacquer	D			A	D		A	D	D	D	D	D	A			A	D
Lacquer Thinner	C			B			A		A	D	D		A		A	A	
Lactic Acid (Milk Acid)	A	A	A	A	A	C	A	B	A	A	B	A	A	A	B	A	D
Lard	A	A	A	A	A		A	A	C	C	A	C	A				B
Lard Oil	A		A	A	A		A	A	A	C	A	C	A	A			A
Latex				A	A		A	A	B	A	A	C	A	A			
Lauric Acid	A	A	A	A	A		A						A	A			
Lauryl Chloride	A	A	A	A	A		A		A		A		A	A			
Lead Acetate (Sugar of Lead)	A	A	A	A	A		A	C	A	C	B	C	B	A	A	A	D
Lead Chloride	A	A	A	A	A		A	A	A	A	A	A	C				
Lead Nitrate	A	A	A	A			A	A	A	A	A	B	A	A			A
Lead Sulfate	A	A	A	A	A		A	A	A	B	A	A	B	B		B	C
Lemon Oil	A	D	A	D	A		D	A		D			A	A			
Levulinic Acid																	
Ligroin (Benzine)	D		D	C	A		A	A	C	B	A	C	A				A
Lime (Calcium Oxide)	A			A	A		A	A	C	A	A	A	A		A		D
Lime Sulfur Solution	A		A	A	A		A	A	A	A	D	A	A		A		A
Linoleic Acid (Linolic Acid)	B	A	A	A	A		A	B	D	D	B	C	A	A		A	C
Linseed Oil (Flaxseed Oil)	A	D	A	A	A		A	A	B	A	A	A	A	A		A	A
Lithium Bromide	A				A		A	A		D	A						A
Lithium Chloride	A	A		A			A	D	A	A	A		A	A			C
LPG	D			A	A		A						B				B
Lubricants	A			A			A	A		D	A		A		A	A	
Lubricating Oil	A	A	A	A	A		A	A	D	C	A	C	A	A		A	A
Lye Solution (See Sodium Hydroxide & Potassium Hydroxide)	A	A		A	A												
Machine Oil	A	A	A	A	A		A	A		A							
Magnesium Acetate							A	D			D	A					
Magnesium Carbonate	A	A	A	A	A		A	A	B	A	A	A	A	A		B	B
Magnesium Chloride	A	A	A	A	A		A	A	A	A	A	A	B	B	A	A	C
Magnesium Citrate	A	A	A	A	A		A	A	A		A					B	
Magnesium Hydroxide [Milk of Magnesia]	A	A	A	A	A		A	A	A	A	A		A				A
Magnesium Nitrate	A	A	A	A	A		A	A	B	A	A	A	A		A	A	C
Magnesium Oxide		A					A	A	A	A	A		A				A
Magnesium Sulfate (Epsom Salts)	A	A	A	A	A		A	A	A	A	A	A	A	A	A	A	A
Maleic Acid	A	A	A	A	A		A	A	C	D	D	C	A	A	A	A	B

CHEMICAL	THERMOPLASTIC							ELASTOMER					METAL				
	PVC	CPVC - CORZAN	CPVC - Accu-Pulse only	PP	PVDF - KYNAR	Polycarbonate	PTFE	Viton	EPDM	Neoprene	Nitrile	Hypalon	316 S/S	Alloy 20	Titanium	Hastelloy C	Carbon Steel
Maleic Anhydride							A	A	D	D	D	A			A		
Malic Acid (Apple Acid)	A	A	A	A	A		A	A	D	C	A	B	A		A	B	D
Manganese Sulfate	A	A	A	A			A	A	A	A	A	A	A				B
Mash								A		A	A	A					
Mayonnaise				A			A	A	D	D	A		A				D
Melamine (Triazane)							A				C		D				
Mercuric Chloride	A	A	A	A	A		A	A	A	A	A	A	D	B	A	A	D
Mercuric Cyanide	A	A	A	A	A		A	A	B	A	A	A	A	A	A		C
Mercuric Nitrate		A					A	A	A	A		A	A				
Mercuric Sulfate	A	A	A	A	A		A	A	A		A						
Mercurous Chloride																	
Mercurous Nitrate	A	A	A	A	A		A	A	A	C	A		A	A		C	C
Mercury (Quicksilver)	A	A	A	A	A		A	A	A	A	A	A	A	A	B	A	A
Methacrylic Acid Glacial	D							D	C	C	D						
Methane (Methyl Hydride)	A	A	A	A	A		A	A	C	B	A	A	A	A		A	A
Methane Sulfonic Acid		A			A		A										
Methanol (See Alcohol, Methyl)	A	C		A	A	C	A	D	A	A	A	A	A	A	A	A	A
Methoxyethyl Oleate	A																
Methyl Acetate	D		D	B	A		A	D	B	C	C	C	A	A		A	B
Methyl Acetone							A	D	A	C	D	C	A	A			A
Methyl Acrylate					A		A	D	B	C	D	C	A	A			A
Methyl Alcohol	A	A	A	A	A	C	A	C	A	A	A	A	A				A
Methyl Benzene (See Toluene)	D	D		C	A	C	A	A	D	D	D	D					
Methyl Bromide [Bromomethane]	D	D	D	D	A		A	A	C	D	D	C	B	B			BA
Methyl Butanol (See Alcohol, Amyl)							A	A		A	A	A					
Methyl Butyl Ketone	A				D		A	D	B	D	D	D	A				
Methyl Cellosolve	D	D	D	A	A		A	D	B	C	D	A	A	A			B
Methyl Chloride (Chloromethane)	D	D	D	D	A		A	C	C	D	C	D	A	A	A	A	A
Methyl Chloroform (Trichloroethane)	D	D	D	C	A		A	B	D	C	C	C	A	A			
Methyl Ether (See Dimethyl Ether)							A	C	C	C	B	C	C				C
Methyl Ethyl Ketone (MEK)	D	D	D	C	D	D	A	D	A	D	D	C	A	A	A	A	A
Methyl Formate		D					A	D	A	B	D	C	A	A		A	C
Methyl Isobutyl Alcohol										D	D						
Methyl Isobutyl Carbinol							A	A	A	A	A	A					
Methyl Isobutyl Ketone	D	D	D	C	A	D	A	D	B	D	D	C	A	A	A	A	C
Methyl Isopropyl Ketone	D		D	D	A	D	A	D	C	D	D	C	A				C
Methyl Methacrylate	A				D		A	D	D	C	D	A	C				C
Methyl Propanol							A	A	B	A	A	A					
Methyl Salicylate (Wintergreen Oil)	A	A	A	A	A				C	D	D						A
Methylamine	D	D	D	D	C		A	D	A	A	B		A				
Methylene Bromide	D				D		A	C	D	D	D	C	A				A
Methylene Chloride	D	D	D	D	C	D	A	B	D	D	D	D	A	A	A	A	B
Methylene Iodine	D				C		A	A	A								
Methylhexane							A	A	D	B	A	D					
Methylisobutyl Carbinol	A		A	A	A			A	A								
Methylmethacrylate		D			A		A	D	D								
Methylsulfuric Acid	A		A	A	A		A										
Milk	A	A	A	A	A		A	A	A	A	A	A	A	A			D
Mineral Oil	B	A	A	A	A	C	A	A	D	C	A	B	A	A		A	A
Molasses	A		A	A	A		A	A	A	A	A	A	A	A		A	A
Monochloroacetic Acid (See Chloroacetic Acid)	A		A	B	A		A	B	C		D						D
Monochlorobenzene (See Chlorobenzene)				B	A		A	A	D	C	D	C	A	A			A
Monoethanolamine	D				D		A	A	A	D	A		A	A			A
Morpholine				B	B		A		A	C	C	C	A	B			B
Motor Oil	A	A	A	C	A		A	A	D		A		A	A			A

CHEMICAL	THERMOPLASTIC							ELASTOMER					METAL				
	PVC	CPVC - CORZAN	CPVC - Accu-Pulse only	PP	PVDF - KYNAR	Polycarbonate	PTFE	Viton	EPDM	Neoprene	Nitrile	Hypalon	316 S/S	Alloy 20	Titanium	Hastelloy C	Carbon Steel
Mustard	A		A	A			A	A	A	A	B		A			A	B
Naphtha	A	A	A	A	A		A	A	D	D	B	C	A	A	A	A	A
Naphthalene (Tar Camphor)	D	D	D	B	A		A	B	D	D	D	C	A	A	A	A	A
Natural Gas	A		A	A	A		A	A	D	A	A	A	A	A		A	A
Neon							A	A	A	A	A	A	A				A
Nickel	A		A	A			A	A	A	A	A						
Nickel Acetate	A	A	A	A	A		A	D	A	B	B	C	C				
Nickel Chloride	A	A	A	A	A		A	A	A	A	A	A	B	A	A	A	D
Nickel Cyanide	A		A														
Nickel Nitrate	A	A	A	A	A		A	A	B	B	A	A	B	A			C
Nickel Sulfate	A	A	A	A	A		A	A	A	A	A	A	A			A	D
Nicotine	A		A	D	C		A			C	C	A	A	A			C
Nicotine Acid	A		A	A	A		A		A	A			B	B			C
Nitric Acid 10%	A	A	A	A	A	C	A	A	B	C	D	A	A	A	A	A	D
Nitric Acid 20%	A	A		A			A	A	D	D	D		A				D
Nitric Acid 30%	A	A	A	A	B		A	A	B	C	D	A	A				D
Nitric Acid 40%	A		A	C	B		A	A	D	C	D	A					C
Nitric Acid 50%	A	A	A	A	B		A	A	D	D	D	C	A	A			C
Nitric Acid 70%	D	B	D	D	D		A	C	D	D	D	C	A	A			C
Nitric Acid Concentrate	D	D	D	D	D		A	C	D	D	D	C	A				D
Nitric Acid Fuming	D		D	D	D		A	C	D	D	D	C	A	A			D
Nitrobenzene (Oil of Mirbane) [ligroin]	D	D	D	A	A	D	A	C	C	D	C	C	B	A	A	A	A
Nitroethane					A		A	D	A	C	D		A				A
Nitrogen							A	A	A	A	A	A	A	A			A
Nitrogen Dioxide					A		A										
Nitrogen Solutions										A		A					
Nitroglycerine	D						A		A				A	A			B
Nitromethane					A		A	D	B	D	D		A				A
Nitrous Oxide	A	A	A	A	A		A	A	A	C	A	B	A	A		A	B
Ocenol	A	A	A	D	A												
Octane					A		A	A	D								
Octyl Acid (Caprylic Acid)					A		A				C	B					
Octylamine							A	D			C	C					
Oils	A	D	A	A	A												
Oils, Aniline	D			A			A	A	B	D	D		A		A	A	
Oils, Anise										D			A				
Oils, Bay								A		D			A				
Oils, Bone								A		D	A		A				
Oils, Castor	A							A	B	A	A		A				
Oils, Cinnamon	A							A		D			A				
Oils, Citric				A				A		D	A		A				
Oils, Clove				B							A		A				
Oils, Coconut				A				A	A	A	A		A				
Oils, Cod Liver				A				A	A	A	A		A				
Oils, Corn			A	A				A	C	D	A		A				
Oils, Cotton Seed	A		A	A			A	A	C	D	A		A				C
Oils, Creosote				D				A	D	C	B		A				
Oils, Crude Sour		D															
Oils, Diesel Fuel			A	A				A	D	D	A		A				
Oils, Fuel	A						A	A	D	D	B		A		A	A	
Oils, Linseed	A		A	A				A	D	D	A		A				
Oils, Mineral	A			A				A	D	A	A		A				
Oils, Olive	A		A	A			A	A	B	D	A	B	A	A		A	A
Oils, Pine	A		A				A	A		D	C		A				
Oils, Silicone				A				A		A	A		A				

CHEMICAL	THERMOPLASTIC							ELASTOMER					METAL				
	PVC	CPVC - CORZAN	CPVC - Accu-Pulse only	PP	PVDF - KYNAR	Polycarbonate	PTFE	Viton	EPDM	Neoprene	Nitrile	Hypalon	316 S/S	Alloy 20	Titanium	Hastelloy C	Carbon Steel
Oils, Vegetable	A	A	A	A	A			A			A	A		A			
Oleic Acid (Red Oil)	A		B	A	A		A	B	C	B	B	A	A	A	A	C	
Oleum	D	D	D	D	D		A	D	D	D	D	A		A		B	
Orange Extract				A	A		A										
Oxalic Acid	A	A	A	A	A		A	A	A	B	B	A	A	A	C	A	D
Oxygen Gas	A	A	A	A	A		A	A	A	A	C	A	A	A	A	A	A
Ozone	A		B	C	A		A	A	A	B	D	A	A	A		A	A
Palmitic Acid 10%	A	A	A	A	A		A	A	B	B	A	C	A	A		B	A
Palmitic Acid 70%	D		A	A			A	A	B	C	A	C	A	A			A
Paraffin	A	A	A	A	A		A	B	D	A	A	D	A	A		A	A
Pentane (Amyl Hydride)	C						A	A	D	B	A	B	C		A	B	B
Peracetic Acid 40%	D		D	D	A		A	A	B								
Perchloric Acid 10%	A	A	A	A	A	D	A	A	B	A	D	A	B	A			D
Perchloric Acid 70%	D		D	A	A		A	A	A	A	D	A	B	B			
Perchloroethylene	D		D	D	A	D	A	A	D	D	D	C	A	A		A	B
Perphosphate	A		A	A			A	A	A		A						
Petrolatum (Petroleum Jelly)	A		A	A	A		A	A	C	B	A	B	A				C
Petroleum (Sour)	A							A	D		A						
Petroleum Oils	A		A	B	A		A	A	D	C	A	C	A				A
Phenols 100% (Carbolic Acid)	D	A	A	A	A	C	A	B	C	D	D	C	A	A	A	A	D
Phenylacetate							A	D	B	D	D	C					
Phenylhydrazine	D	D	D	D	A		A	C	C	D	D	C					
Phenylhydrazine Hydrochloride	D		A	D	A												
Phosgene Gas	D		D	C	A			D	A	C	D						
Phosgene Liquid	D		D	D	C			D	A	C	D						
Phosphoric Acid 10%	A	A	A	A	A	C	A	A	A	C	C	A	A	A	B	A	D
Phosphoric Acid 100%	A	A		A	A		A	A	B	D	D	C	B		B	A	
Phosphoric Acid 20%	A	A	A	A	A		A	A	A	B	C	A					
Phosphoric Acid 40%	A	A	A	A	A		A	A	B	D	D		A		A	A	
Phosphoric Acid 50%	A	A	A	A	A	C	A	A	A	C	C	A	B	A	B	A	D
Phosphoric Acid 80%	A	A	A	A	A		A	A	A								
Phosphoric Acid 85%	A	A	A	A	B	C	A	A	A	C	C	B	B	A	C	A	D
Phosphoric Acid Crude							A	A	B	D	C	A	C		C	A	
Phosphorus Oxychloride							A			D		D	D			B	D
Phosphorus Red	A		A	A	A		A						A	A			
Phosphorus Trichloride	D	D	D	D	A		A	C	C	D	D	C	A	A			B
Phosphorus Yellow	A		A	A	A		A			C							
Photographic Developer	A	A	A	A	A		A	A		A	A		A		A	A	C
Photographic Solutions	A	A	A	A	A		A	A			A		A	A			
Phthalic Acid (Terephthalic Acid)	D	D	D	D	A		A	A	A	C	C	A	A	A		A	C
Phthalic Anhydride	D		D	D	A		A	A	A	A	C		B			A	A
Pickle Brine	A		A	A	A					A		A					
Pickling Solutions	A		A	A	A		A	B	C	D	D	D					
Picric Acid	D	D	C	A	A		A	A	C	A	C	A	A	A		A	C
Pine Oil	D	D		C		C	A	A	D	C	B	D	A	A			B
Plating Solution, Arsenic	A	A	A	A	A			A		A	A		A		A	A	
Plating Solutions, Antimony	A	A	A	A	A		A	A		A	A		A		A	A	
Plating Solutions, Brass	A	A	A	A	A		A	A	A	A	A		A		A	A	
Plating Solutions, Bronze	A	A	A	A	A		A	A		A	A		A		A	A	
Plating Solutions, Cadmium	A	A	A	A	A		A	A	A	A	A		A		A	A	
Plating Solutions, Chrome	A	A	A	A	A		A	C	B	C	D	D	C	A	A	A	
Plating Solutions, Copper	A	A	A	A	A		A	A	A	A	A		D		A	A	
Plating Solutions, Gold	A	A	A	A	A		A	A	A	A	A		C		A	A	
Plating Solutions, Indium	A	A	A	A			A	A		A	A		C		A	A	
Plating Solutions, Iron	D	A	A	C			A	A		C	A		C		A	D	

CHEMICAL	THERMOPLASTIC							ELASTOMER					METAL				
	PVC	CPVC - CORZAN	CPVC - Accu-Pulse only	PP	PVDF - KYNAR	Polycarbonate	PTFE	Viton	EPDM	Neoprene	Nitrile	Hypalon	316 S/S	Alloy 20	Titanium	Hastelloy C	Carbon Steel
Plating Solutions, Lead	A	A	A	A	A		A	A	A	A	B		C		D	A	
Plating Solutions, Nickel	A	A	A	A	A		A	A	A	A	A		C	A	A	A	
Plating Solutions, Rhodium	A	A	A	A	A		A	A	A	B	A		D		D	D	
Plating Solutions, Silver	A	A	A	A	A		A	A	A	A	A		A	A	A	A	
Plating Solutions, Tin	A	A	A	A	A		A	A	A	C	B		C	A	D	A	
Plating Solutions, Zinc	A	A	A	A	A		A	A	A	A	A		D		A	D	B
Polyethylene Glycol	A	D	A	A	A		A	A	A		A	A					
Polyvinyl Acetate Emulsion					A		A	A	A	B		B					C
Polyvinyl Alcohol	A		D	A	A		A	A	A								
Potash (Potassium Carbonate)	A	A	A	A	A		A	A	A	A	A	A	A	A	A	A	C
Potassium Acetate	A	A	A	A	A		A	D	A	B	B	B	C				C
Potassium Alum (Aluminum Potassium Sulfate)	A	A	A	A	A		A	A	A	A	A	A					
Potassium Bicarbonate	A	A	A	A	A		A	A	A	A	A	A	B	A	A	B	A
Potassium Bichromate	A	A	A	A	A		A	A	A	B	A	A	A	A			B
Potassium Bisulfate	A	A	A	A	A		A	A	A	A	A	A	A	A			C
Potassium Bromate	A	A	A	A	A		A	A	A	A	A	A	A	A			A
Potassium Bromide	A	A	A	A	A		A	A	A	A	A	A	B	A	A	B	D
Potassium Carbonate (Potash)	A	A	A	A	A		A	A	A	A	A	A	A	A	A	B	C
Potassium Chlorate Aqueous	A	A	A	A	A		A	A	A	A	A	A	A	A	A	B	B
Potassium Chloride	A	A	A	A	A		A	A	A	A	A	A	A	A	A	A	C
Potassium Chromate	A	A	A	A	A		A	A	A	A	A	A	B	A		B	B
Potassium Coppercyanide	A		A	A	A		A	A	A	A	A						
Potassium Cyanide	A	A	A	A	A		A	B	A	A	A	A	B	A	A	A	B
Potassium Dichromate	A	A	A	A	A		A	A	A	A	A	A	A	A	A	B	C
Potassium Ferricyanide	A	A	A	A	A		A	A	A	A	A	A	A	A			C
Potassium Ferrocyanide	A	A	A	A	A		A	A	A	A	C	A	A	A		B	C
Potassium Fluoride	A	A	A	A	A		A	A	A	A	A	A	A	A			
Potassium Hydroxide (Caustic Potash)	A	A	A	A	A	C	A	C	B	B	C	A	A		C	B	A
Potassium Hydroxide 25%		A					A		A	A	B	A	A	A			B
Potassium Hydroxide 50%	A	A	A	A	B												
Potassium Hypochlorite	A	A	A	A	A		A	A	A	D	D	A	B	A			B
Potassium Iodide	A	A	A	A	A		A	A	A	A	A	A	A	A			B
Potassium Nitrate (Salt Peter)	A	A	A	A	A		A	B	A	A	A	A	D	A	A	A	B
Potassium Perborate	A	A	A	A	A		A			A	A						
Potassium Perchlorate	A	A	A	A	A		A		A	C	C	A					
Potassium Permanganate	A	A	A	A	A		A	B	A	A	C	A	B	A	B	A	A
Potassium Persulfate	A	A	A	A	A		A		A	C	C	A	A				
Potassium Phosphate		A	A				A	A	A	A	A		C				D
Potassium Salts				A	A		A	A	A	A	A						
Potassium Sulfate	A	A		A	A		A	A	A	A	A	A	B	A	A	A	A
Potassium Sulfide	A	A		A	A		A	A	A	A	A	A	B	B		B	C
Potassium Thiosulfate							A	A		A	A	A	C				
Propane (Dimethylmethane)	A	A	A	B	A	D	A	A	D	B	A	B	A	A		A	A
Propanol (See Alcohol, Propyl)	A	A		A	A		A	A	A	A	A	A	A	A		A	A
Propargyl Alcohol	A		A	A	A				A	A		C					
Propyl Acetate					A		A	D	B	D	D	C	A	A			A
Propyl Alcohol	A	A	A	A	A		A	A	A	A	A	A	A	A		A	A
Propylene							A	A	D	D	D	D	A				A
Propylene Dichloride	D	D	D	C	A		A	B	D	D	D	D	A				A
Propylene Glycol	C	A	C	A		C	A	A	A	A	A	A	A			B	B
Pyridine	D	D	D	A	C		B	D	C	D	D	C	C	A		A	A
Pyrogallol Acid (Pyrogallol)	B			A	D		A	A	C	A	A		A	A		A	B
Quaternary Ammonium Salts							A	A		A	A		A				D
Rayon Coagulating Bath	A		A	A	A												

CHEMICAL	THERMOPLASTIC							ELASTOMER					METAL				
	PVC	CPVC - CORZAN	CPVC - Accu-Pulse only	PP	PVDF - KYNAR	Polycarbonate	PTFE	Viton	EPDM	Neoprene	Nitrile	Hypalon	316 S/S	Alloy 20	Titanium	Hastelloy C	Carbon Steel
Rhodan Salts	A		A	A	A		A	A	A								
Rosins	C			A			A	A	D	A	A	A	A	A		B	C
Rum	A			A			A	B	A	A	A	A					
Rust Inhibitors				A				A		C	A		A				D
Salad Dressing	A			A				A			A		A				D
Salicylaldehyde	D			A	C		A	A	A		A						
Salicylic Acid	A			A	A	C	A	A	A	C	C	A	A	A			C
Saline Solutions	A		A	A	A					A							
Salt Brine	A	A	A	A	A		A	A	A	A	A	A	A			B	
Sea Water	A	A	A	A	A		A	A	A	B	A		A		A	A	D
Selenic Acid	A		A	A	A				A	A	A					A	
Sewage	A		A	A	A		A	A	A	B	A	A	A				D
Shellac Bleached				A			A	A	D	C	A		A				A
Shellac Orange				A			A	A	D	C	A		A				A
Silicic Acid	A	A	A	A	A		A	A	A	A	A						
Silicone Oil	A	A	A	A	A		A	A	A	A	A	A	A		A	A	
Silver Bromide							A						C		A	D	
Silver Cyanide	A	A	A	A	A		A	A	A	A			A	A			D
Silver Nitrate	A	A	A	A	A	A	A	A	A	A	C	A	A	A	A	A	D
Silver Salts	A			A	A		A	A	A	A			A				
Silver Sulfate	A	A	A	A	A		A	A	A	A	A			A			
Soap Solutions	A	A	A	A	A		A	A	A	A	A	A	A	A	A	A	A
Soda Ash (Sodium Carbonate)							A	A	A	A	A	A	C				C
Sodium	A		A	A	A		A	A	A								
Sodium Acetate	A	A	A	A	A	C	A	C	A	B	C	A	B	A	A	A	C
Sodium Alum	A	A	A	A	A		A	A	A	A	A	A					C
Sodium Aluminate		A					A	A	A	A	A	A	A	A	B	A	A
Sodium Benzoate	A	A	A	A	A		A		A		A						
Sodium Bicarbonate	A	A	A	A	A		A	A	A	A	A	A	A	A	A	A	C
Sodium Bichromate	A	A	A	A	A		A	A	A	A	A	A	A	A			C
Sodium Bisulfate	A	A	A	A	A		A	A	A	A	A	A	A	A	A	B	D
Sodium Bisulfite	A	A	A	A	A		A	A	A	A	A	A	A	A	A	A	D
Sodium Borate (Borax)	C	A	A	A	A		A	A	A	A	A	A	A	A	A	A	C
Sodium Bromate																	
Sodium Bromide	A	A	A	A	A		A	A	A	A	A		A	A	A		C
Sodium Carbonate (Soda Ash)	A	A	A	A	A		A	A	A	A	A		A	A	A	A	B
Sodium Chlorate	A	A	A	A	A		A	A	A	A	C	A	B	A	A	B	C
Sodium Chloride (Salt)	A	A	A	A	A		A	A	A	A	A	A	C	B	A	A	C
Sodium Chlorite	D	A	D	A			B	D	D		B	A					
Sodium Chromate		A		A			A	B	A	A	A	C	A	A	A	B	B
Sodium Cyanide	A	A	A	A	A		A	A	A	A	A	A	A	A	A		A
Sodium Dichromate	A	A	A	A	A		A	A	A	B	A	A	A	A			B
Sodium Ferricyanide	A	A	A	A	A		A	A	A		A		A	A			C
Sodium Ferrocyanide	A	A	A	A	A		A	A	A		A		A	A			
Sodium Fluoride	A	A	A	A	A		A	B	A	B	A	A	B	A	A	A	C
Sodium Hydrosulfide							A	A	A	A	D						
Sodium Hydrosulfite	C						A	A		A						A	
Sodium Hydroxide 15%	A	A	A	A	A		A	C	A	A	A	A	A		A		
Sodium Hydroxide 20%	A	A	A	A	A	D	A	C	A	A	A		A		A	A	A
Sodium Hydroxide 30%	A	A	A	A	A		A	C	A	A	A	A	A		A		B
Sodium Hydroxide 50%	A	A	A	A	A	D	A	C	A	A	A	A	A	A	A	A	B
Sodium Hydroxide 70%	A	A	A	A	B	D	A	D	A	B	C	A	B	A	A	B	C
Sodium Hydroxide Conc. (Caustic Soda)	A	A	A	A	A	C	A	B	A	B	D	B					C
Sodium Hypochlorite 20% (Bleach)	A	A	A	A	A	C	A	A	B	C	C		C		A	A	D
Sodium Hypochlorite Conc.	A	A	A	B	A	D	A	D	D	C	D	A	A	A		A	D

CHEMICAL	THERMOPLASTIC							ELASTOMER					METAL				
	PVC	CPVC - CORZAN	CPVC - Accu-Pulse only	PP	PVDF - KYNAR	Polycarbonate	PTFE	Viton	EPDM	Neoprene	Nitrile	Hypalon	316 S/S	Alloy 20	Titanium	Hastelloy C	Carbon Steel
Sodium Hyposulfate							A			C			A				D
Sodium Metaphosphate	A	A	A	A	A		A	A	A	B	A	A	A	A			C
Sodium Metasilicate	A		A	A	A		A	A	A	A	A		A				B
Sodium Nitrate	A	A	A	A	A		A	B	A	B	C	A	B	A	A	A	A
Sodium Nitrite	A	A	A	A	A		A	A	A	A	C	A	A	A			B
Sodium Palmitate	A		A	A	A		A										
Sodium Perborate	A	A	A	A	A		A	A	A	C	C	B	C	A		A	B
Sodium Perchlorate	A	A	A	A	A		A				B						
Sodium Peroxide	A		A	A	A		A	A	A	C	B	A	A	A		B	C
Sodium Phosphate Acid (Di Basic)	A	A	A	A	A		A	A	A	B	A	A	A	A		A	B
Sodium Phosphate Alkaline (Mono Basic)	A		A	A	A		A	A	A	A	A	A	A	A		A	B
Sodium Phosphate Neutral (Tri Basic)	A		A	A	A		A	A	A	A	A	A	A	A		A	B
Sodium Polyphosphate	A				A		A	A	A	D	B	B	A		A	A	D
Sodium Silicate	A	A	A	A	A		A	A	A	A	A	A	A	A	A	A	A
Sodium Sulfate	A	A	A	A	A		A	A	A	A	A	A	A	A	A	A	A
Sodium Sulfide	A	A	A	A	A		A	A	A	A	C		B	A	A	A	B
Sodium Sulfite	A	A	A	A	A		A	A	A	A	A	A	A	A	A	A	
Sodium Tetraborate	A			A	A		A	A			A		A				
Sodium Thiocyanate	A	A	A	A	A		A	A	A								
Sodium Thiosulfate	A		A	A	A		A	A	A	A	B	A	A	A			D
Sorghum							A	A		A	A		A				A
Soy Sauce							A	A		A	A		A				D
Soybean Oil	A	D	A	A	A		A	A	C	A	A	A	A	A		A	A
Stannic Chloride	A	A	A	A	A		A	A	A	C	A	A	D	A	A		D
Stannic Salts	A			A	A		A	A	A	A			D				
Stannous Chloride (Tin Salts)	A	A	A	A	A		A	B	B	A	B	A	C	A	A	A	D
Starch (Amylum)	A	A	A	A			A	A	A	A	A	A	A	A			D
Stearic Acid	A	A	A	A	A		A	A	C	C	B	A	A	A	A	A	C
Stoddard Solvent	D	D	D	C	A		A	A	D	C	A	C	A	A	A	A	A
Strontium Carbonate																	
Styrene	D	D			A		A	C	D	D	D	C	A	A		A	A
Succinic Acid (Butanedioic Acid)	A		A	A	A		A	A	A		A		A	A		A	A
Sugar Solutions		A		A			A	A	A	A	A	A	A			A	B
Sulfamic Acid	D	A	D	D	D				C	A	C	A	A	A			C
Sulfate Liquors	A	A	A	A	A		A	A	A	A	A	A	C	A		A	C
Sulfated Detergents	A		A	A	A											A	
Sulfer 10%	A			A			A	A	D	D	C		C		A	A	
Sulfer Dioxide	D			D			A	C	A	B	D		A		A	B	
Sulfite Liquor	A		A	A	A		A	A	A	C	B						
Sulfur	A	A	A	A	A		A	A	C	A	C	A	A	A	A	A	C
Sulfur Chloride	A	A	A	C	A		A	A	D	D	D	A	D	B			D
Sulfur Dioxide Dry	A	A	A	A	A	C	A	A	A	D	D	A	A	A		B	A
Sulfur Dioxide Wet	D	A	A	A	A	C	A	A	A	C	D	A	A	A		A	
Sulfur Slurries	A		A	A	A												
Sulfur Trioxide Dry	C	A	C	D	D		B	C	C	D	C	C	A				A
Sulfuric Acid 10%	A	A	A	A	A	A	A	A	A	C	C	B	C		A	A	D
Sulfuric Acid 30%	A	A	A	A	A		A	A	A	A	C	A	D	A	C	A	C
Sulfuric Acid 50%	A	A	A	A	A		A	A	B	C	C	A	D	A	C	A	D
Sulfuric Acid 60%	A	A	A	A	B		A	A	B	C	D	A	D	A	C	A	C
Sulfuric Acid 70%	A	A	A	C	A		A	A	A	D	C	A	D	A	C	B	C
Sulfuric Acid 80%	A	A	A	A	A	D	A	A	A	D	C	A	B	A	D	A	D
Sulfuric Acid 90%	B	A	A	C	A		A	A	A	D	C	A	A	A	D	A	C
Sulfuric Acid 95%	D	A	C	D	A		A	A	D	D	D	C	D	B	D	A	C
Sulfuric Acid 98%	D	A	D	D	A		B	D	D	D	C	C	D	B	D	B	C
Sulfurous Acid	A	A	A	A	A		A	A	C	C	D	A	B	A	A	B	D

CHEMICAL	THERMOPLASTIC							ELASTOMER					METAL				
	PVC	CPVC - CORZAN	CPVC - Accu-Pulse only	PP	PVDF - KYNAR	Polycarbonate	PTFE	Viton	EPDM	Neoprene	Nitrile	Hypalon	316 S/S	Alloy 20	Titanium	Hastelloy C	Carbon Steel
Sulfuryl Chloride	A						A									B	
Syrup	A			A			A	A	A	B	A		A				
Tall Oil	A	C	A	A	A		A	A	D	B	A	C	B	A		A	B
Tallow				A	A		A	A	A	B	A	B	A				
Tannic Acid	A	A	A	A	A		A	A	B	A	C	A	C	A	A	A	C
Tanning Liquors	A	A	A	A	A		A	A	B	A	C	A	A	A	A	A	
Tar	D		D	B	A		A	A	D	C	C	A	A	A		A	A
Tartaric Acid (Dihydrxy-succinic Acid)	A	A	A	A	A	C	A	A	B	A	A	A	B	A	A	A	D
Tertiary Butyl Alcohol	A		A	A	A		A	A	B	C	D						
Tetrachlorethane	D			A			A	A	D		D		A		A	A	
Tetrachloroethane	D			D	A		A	A	D	D	D	C	A	A			A
Tetraethyl Lead	B	A	A	A	A		A	B	D	C	C	C	B	A			B
Tetrahydrofuran	D	D	D	C	B		A	D	D	D	D	C	A				
Tetralin	D		D	D	A		A	A	D	D	D	D	A				A
Thionyl Chloride	D	D	D	D	D	D	A	A		D	D		D				D
Thread Cutting Oils	A		A	A	A		A		D		A		A	A		A	A
Titanium Tetrachloride	D	D	D	D	A		A	A	D	D	C	C	C	B	A	C	C
Titanous Sulfate	A		A	A	A		A										
Toluene	D	D	D	C	A	C	A	B	D	D	D	D	A	A	A	A	A
Toluene Toluol	D	D	D	C	B	C	A	C	D	D	D	D	A		A	A	A
Tomato Juice	A	A	A	A	A		A		A	A	A	C	A	A		B	D
Toxaphene-Xylene	D		D	D	A												
Transformer Oil	A		A	A	A		A	A	D	C	A	D	A	A		A	A
Tributyl Phosphate	D	D	D	B	A		A	D	A	C	D	C	A	A	A		A
Trichloroacetic Acid	A	A	A	A	A		A	D	D	D	D	A	D	B	B		D
Trichloroethane	D			D	A		A	A	D	D	D		A		A	A	C
Trichloroethylene	D	D	D	C	A		A	A	D	D	C	C	A	A	B	A	B
Trichloropropane							A	A		C	A		A		A		A
Tricresyl Phosphate	D			A	D		A	B	A	D	D		A		B	A	C
Triethanolamine	B	D		D	C		A	D	A	A	B	A	A	A	A		A
Triethyl Phosphate	A		A	A	A		A	A	A				A				
Triethylamine	A	A	A	D	C		A		A	A							
Trimethylpropane	A		A	A	A		A		A	A	A	A					
Trisodium Phosphate	A	A	A	A	A		A	A	A	A	A	A	A	A			
Turbine Oil	A		A	B			A	A	D	D	B	D	A				A
Turpentine	D	D	A	B	A	D	A	A	C	D	A	C	A	A		A	A
Urea	A	A	A	A	A	D	A	A	A	A	C	A	A	A			C
Urine	A	A	A	A	A		A	A	A	D	A	A	A	A			CA
Vanilla Extract				A			A	D		D	A		A				
Varnish	D			A	A		A	A	D	D	B	D	A	A		A	C
Vaseline	D		A	A	A		A	A	D	B	A	B	A	A		A	A
Vegetable Oil	A	D	C	A	A		A	A	A	D	A	A	A	A		B	A
Vinegar	A	A	A	A	A		A	A	A	A	C	A	A	A	A	A	D
Vinyl Acetate	D	D	D	B	A		A	D	B	C	D	C	A	B			C
Vinyl Chloride	D				A		A	A	C	D	D	D	A				C
Vinyl Ether							A	D			B	B					
Water Acid Mine	A	A	A	A	A		A	A	A	C	A	A	A	A		A	D
Water Deionized	A	A	A	A	A		A	A	A	A	A	A	A	A		A	C
Water Demineralized	A	A	A	A	A		A	A		A						A	
Water Distilled	A	A	A	A	A		A	A	A	A	A	A	A	A		A	D
Water Potable	A		A	A	A		A	A	A	A	A	A	A	A		A	B
Water Salt	A	A	A	A	A		A	A	A	A	A	A	A	A		A	D
Water Sewage	A		A	A	A		A	A	A		A					A	
Weed Killers										C	B		A				
Whey							A	A			A		A				

CHEMICAL	THERMOPLASTIC							ELASTOMER					METAL				
	PVC	CPVC - CORZAN	CPVC - Accu-Pulse only	PP	PVDF - KYNAR	Polycarbonate	PTFE	Viton	EPDM	Neoprene	Nitrile	Hypalon	316 S/S	Alloy 20	Titanium	Hastelloy C	Carbon Steel
Whiskey	A	A	A	A	A		A	A	A	A	A	A	A	A		A	D
White Acid					A		A										
White Liquor	A	A	A	A	A		A	A	A	A	B	A	A	A		A	C
Wines	A	A	A	A	A		A	A	A	A	A	A	A				D
Xenon							A	A	A	A	A	A					
Xylene	D	D	D	D	A	D	A	B	D	D	D	C	A	A		A	A
Xylol	D		D	C	A	D	A	A	D	D	C	D	C				C
Yeast				A	A		A	A	A	A							
Zeolite							A	A	A	C	B	A					
Zinc Acetate	A	A	A	A	A		A	C	A	A	B	A	A	A			C
Zinc Carbonate		A					A	A	A		A	A	B	A			C
Zinc Chloride	A	A	A	A	A		A	A	A	A	A	A	B	A	A	C	D
Zinc Chromate							A					C					
Zinc Nitrate	A	A	A	A	A		A	A	A		A	A	A	A			
Zinc Phosphate																	
Zinc Salts				A	A		A	A	A	A	A	A					
Zinc Sulfate	A	A	A	A	A		A	A	A	A	A	A	A	A	A	A	D
Zirlite							A	C	A	A	B	B					

FORMULA	CHEMICAL
CH ₃ (CH ₂) ₂ NO ₂	1-Nitropropane
(-CH ₂ -O-) _n	Acetal Resin Slurry
CH ₃ CHO	Acetaldehyde [Ethanal]
CH ₃ CONH ₂	Acetamide [Acetic Acid Amide]
CH ₃ COOR	Acetate Solvents
CH ₃ COOH	Acetic Acid
(CH ₃ CO) ₂ O	Acetic Anhydride [Acetic Oxide]
CH ₃ COCH ₃	Acetone [Dimethylketone]
(CH ₃) ₂ C(OH)CN	Acetone Cyanohydrin
CH ₃ CN	Acetonitrile [Methyl Cyanide]
C ₆ H ₅ COCH ₃	Acetophenone [Phenyl Methyl Ketone]
CH ₃ COCH ₂ COCH ₃	Acetyl Acetone (2,4-Pentanedione)
CH ₃ COCl	Acetyl Chloride
(CH ₃ OCO) C ₆ H ₄ COOH	Acetyl Salicylic Acid [Aspirin]
C ₂ H ₂	Acetylene
(CHBr ₂) ₂	Acetylene Tetrabromide [Tetra Bromoethane]
H ₂ C=CHCHO	Acrolein [Acrylaldehyde]
H ₂ C:CHCOOH	Acrylic Acid
CH ₂ CHCN	Acrylonitrile [Vinyl Cyanide]
HOOC(CH ₂) ₄ COOH	Adipic Acid [1,4-Butanedicarboxylic Acid]
(C _n H _{2n+1} OH)	Alcohol General Formula
R-OH	Alcohols
CH ₂ CHCH ₂ OH	Allyl Alcohol [2-Propen-1-ol]
H ₂ C=CHCH ₂ Br	Allyl Bromide [3-Bromopropene]
CH ₂ =CHCH ₂ Cl	Allyl Chloride [3-Chloropropene]
KAl(SO ₄) ₂ ·12H ₂ O	Alum [Aluminum Potassium Sulfate Dodecahydrate]
Al(OH) ₃	Alumina Trihydrate
AlCl ₃	Aluminum Chloride
Al ₂ (SO ₄) ₃	Aluminum Sulfate
NH ₃	Ammonia
AlNH ₄ (SO ₄) ₂ ·12H ₂ O	Ammonium Alum
NH ₄ HCO ₃	Ammonium Bicarbonate
NH ₄ HF ₂	Ammonium Bifluoride
(NH ₄) ₂ CO ₃	Ammonium Carbonate
NH ₄ Cl	Ammonium Chloride [Sal Ammoniac]
(NH ₄) ₂ Cr ₂ O ₇	Ammonium Dichromate
NH ₄ F	Ammonium Fluoride
NH ₄ OH	Ammonium Hydroxide
NH ₄ NO ₃	Ammonium Nitrate
NH ₄ NO ₂	Ammonium Nitrite
(NH ₄ OOC) ₂	Ammonium Oxalate
(NH ₄) ₂ S ₂ O ₈	Ammonium Persulfate
(NH ₄)HPO ₄	Ammonium Phosphate, [Di-basic]
(NH ₄)H ₂ PO ₄	Ammonium Phosphate, [Monobasic]
(NH ₄) ₃ PO ₄ ·3H ₂ O	Ammonium Phosphate, [Tri-basic]
(NH ₄) ₂ SO ₄	Ammonium Sulfate
(NH ₄) ₂ S	Ammonium Sulfide
(NH ₄) ₂ SO ₃ ·H ₂ O	Ammonium Sulfite
NH ₄ SCN	Ammonium Thiocyanate
(NH ₄) ₂ S ₂ O ₃	Ammonium Thiosulfate

FORMULA	CHEMICAL
$C_4H_9CH_2OH$	Amyl [1-Pentanol]
$CH_3COOC_5H_{11}$	Amyl Acetate [Banana Oil]
$CH_3(CH_2)_4OH$	Amyl Alcohol [Pentyl Alcohol]
$CH_3(CH_2)_4Cl$	Amyl Chloride [Chloropentane]
$C_{15}H_{18}$	Amyl Naphthalene
$C_6H_4(OH)C_5H_{11}$	Amyl Phenol
$C_5H_{11}BO_3$	Amyll Borate
$C_6H_5NH_2$	Aniline [Aniline Oil] [Amino Benzene]
$C_6H_5NH_2 \cdot HCl$	Aniline Hydrochloride
$C_6H_5OCH_3$	Anisole [Methylphenyl Ether]
$C_{14}H_8O_2$	Anthraquinone
$SbCl_5$	Antimony Pentachloride
$SbCl_3$	Antimony Trichloride
$HCl + HNO_3$	Aqua Regia [Nitric & Hydrochloric Acid]
C_6H_5R	Aromatic Hydrocarbons
$H_3AsO_4 \cdot 1/2H_2O$	Arsenic Acid
$AsCl_3$	Arsenic Trichloride [Arsenic Butter]
$C_6H_8O_6$	Ascorbic Acid
C_4H_5N	Azole [Pyrrole]
$NaHCO_3$	Baking Soda [Sodium Bicarbonate]
$BaCO_3$	Barium Carbonate
$BaCl_2 \cdot 2H_2O$	Barium Chloride Dihydrate
$Ba(CN)_2$	Barium Cyanide
$Ba(OH)_2$	Barium Hydroxide [Barium Hydrate]
$Ba(NO_3)_2$	Barium Nitrate
$BaSO_4$	Barium Sulfate [Blanc Fixe]
BaS	Barium Sulfide
C_6H_5CHO	Benzaldehyde
C_6H_6	Benzene [Benzol]
$C_6H_5SO_3H$	Benzene Sulfonic Acid
C_6H_5COOH	Benzoic Acid
C_6H_5COCl	Benzoyl Chloride
$CH_3CO_2CH_2C_6H_5$	Benzyl Acetate
$C_6H_5CH_2OH$	Benzyl Alcohol [Phenylcarbinol]
$C_6H_5CO_2CH_2C_6H_5$	Benzyl Benzoate
$C_6H_5(CH_2)_2OH$	Benzyl Carbinol [Phenethyl Alcohol]
$C_6H_5CH_2Cl$	Benzyl Chloride [Chlorotoluene]
$C_6H_5CHCl_2$	Benzyl Dichloride [Benzal Chloride]
$HOC_6H_4COOCH_3$	Betula Oil [Methyl Salicylate]
$C_6H_5C_6H_5$	Biphenyl [Diphenyl]
$(BiO)_2CO_3$	Bismuth Subcarbonate [Bismuth Carbonate]
$CO_1H_2CH_4CO_2N_2$	Blast Furnace Gas
$Na_2B_4O_7 \cdot 10H_2O$	Borax [Sodium Borate]
H_3BO_3	Boric Acid
$HBrO_3$	Bromic Acid
Br_2	Bromine - Anhydrous
BrF_3	Bromine Trifluoride
$Br + H_2O$	Bromine Water
C_6H_5Br	Bromobenzene
$BrCH_2Cl$	Bromochloromethane

FORMULA	CHEMICAL
$C_6H_4BrCH_3$	Bromotoluene
C_4H_6	Butadiene
C_4H_{10}	Butane [LPG] [Butyl Hydride]
$C_3H_7CH_2OH$	Butyl [Butanol]
$CH_3COOC_4H_9$	Butyl Acetate
$C_{24}H_{44}O_5$	Butyl Acetyl Ricinoleate
$CH_2CHCO_2C_4H_9$	Butyl Acrylate
$CH_3(CH_2)_3OH$	Butyl Alcohol
$CH_3(CH_2)_2CH_2NH_2$	Butyl Amine [Aminobutane]
$C_6H_5COO(CH_2)_3CH_3$	Butyl Benzoate
$CH_3(CH_2)_2CH_2Br$	Butyl Bromide
$CH_3(CH_2)_2CH_2CO_2C_4H_9$	Butyl Butyrate
$CH_3(CH_2)_3OCH_2CH_2OCH_2CH_2OH$	Butyl Carbitol®
$HOCH_2CH_2OC_4H_9$	Butyl Cellosolve®
$CH_3(CH_2)_3Cl$	Butyl Chloride (Chlorobutane)
$(CH_3(CH_2)_3)_2O$	Butyl Ether [Dibutyl Ether]
$C_{22}H_{42}O_2$	Butyl Oleate
$CH_3(CH_2)_{16}CO_2(CH_2)_3CH_3$	Butyl Stearate
C_4H_8	Butylene [Butene]
$CH_3(CH_2)_2CHO$	Butyraldehyde
$CH_3CH_2CH_2COOH$	Butyric Acid
$(CH_3CH_2CH_2CO)_2O$	Butyric Anhydride
$CH_3CH_2CH_2CN$	Butyronitrile
$Ca(CH_3COO)_2 \cdot H_2O$	Calcium Acetate Hydrate
$Ca(HSO_3)_2$	Calcium Bisulfite
$CaCO_3$	Calcium Carbonate
$Ca(ClO_3)_2$	Calcium Chlorate
$CaCl_2$	Calcium Chloride
$Ca(HS)_2 \cdot 6H_2O$	Calcium Hydrosulfide [Calcium Sulfhydrate]
$Ca(OH)_2$	Calcium Hydroxide [Slaked Lime]
$Ca(OCl)_2$	Calcium Hypochlorite 20% [Calcium Oxichloride]
$Ca(NO_3)_2$	Calcium Nitrate
CaO	Calcium Oxide [Unslaked Lime]
Ca_2SiO_4	Calcium Silicate
$CaSO_4$	Calcium Sulfate [Gypsum]
CaS	Calcium Sulfide
$CaSO_3 \cdot 2H_2O$	Calcium Sulfite
$CH_3(CH_2)_6CH_2OH$	Capryl Alcohol [Octanol]
$CH_3(CH_2)_6COOH$	Caprylic Acid [Octanoic Acid]
H_2NCO_2R	Carbamate
$(NO_2)_3C_6H_2OH$	Carbazotic Acid [Picric Acid]
C_6H_5OH	Carbolic Acid [Phenol]
CS_2	Carbon Bi or Disulfide
CO_2	Carbon Dioxide
CO	Carbon Monoxide
CCl_4	Carbon Tetrachloride
$CH_2 + H_2O$	Carbonic Acid
H_2CO_3	Carbonic Acid [Liquid]
$C_8H_{12}O_5$	Cellulose Acetate
$NaNO_3$	Chile Saltpeter [Sodium Nitrate]

FORMULA	CHEMICAL
Ca(ClO) ₂	Chlorinated Lime - 35% Bleach
Cl ₂	Chlorine [Anhydrous Liquid]
Cl ₂	Chlorine [Dry]
Cl ₂ /H ₂ O	Chlorine [Wet]
ClO ₂	Chlorine Dioxide
ClF ₃	Chlorine Trifluoride
CH ₂ ClCOOH	Chloroacetic Acid [Mono-]
ClCH ₂ COCH ₃	Chloroacetone [Monochloroacetone]
C ₆ H ₅ Cl	Chlorobenzene [Monochlorobenzene]
ClCH ₂ Br	Chlorobromomethane
C ₄ H ₅ Cl	Chlorobutadiene [Chloroprene]
CHCl ₃	Chloroform
ClSO ₂ OH	Chlorosulfonic Acid
C ₂ H ₂ ClF ₃	Chlorotrifluoroethylene
H ₂ CrO ₄	Chromic Acid
CrCl ₃	Chromic Chloride
Cr ₂ (SO ₄) ₃	Chromium Sulfate
HOC(COOH)(CH ₂ COOH) ₂	Citric Acid
C ₁₀ H ₁₂ O ₂	Clove Oil
CoCl ₂ ·6H ₂ O	Cobalt Chloride
CuCl ₂	Copper Chloride
CuCN	Copper Cyanide
Cu(NO ₃) ₂	Copper Nitrate
CUSO ₄ ·5H ₂ O	Copper Sulfate [Blue Copperas]
CuS	Copper Sulfide
NaHSO ₃	Cream of Tartar [Sodium Bisulfite]
C ₈ H ₁₀ O ₂	Cresylic Acid [Cresol]
CH ₃ CHCHCHO	Crotonaldehyde
C ₆ H ₅ CH(CH ₃) ₂	Cumene [Isopropylbenzene]
C ₆ H ₁₂	Cyclohexane
C ₆ H ₁₁ OH	Cyclohexanol
C ₆ H ₁₀ O	Cyclohexanone
C ₅ H ₁₀	Cyclopentane
C ₁₀ H ₁₄	Cymene [Isopropyltoluene]
(ClC ₆ H ₄) ₂ CHCl	DDT
CH ₃ (CH ₂) ₈ CHO	Decanal
CH ₃ (CH ₂) ₈ CH ₃	Decane
C ₁₀ H ₂₁ OH	Decyl Alcohol [Decanol]
C ₆ H ₁₂ O ₆	Dextrose
(CH ₃) ₂ C(OH)CH ₂ COCH ₃	Diacetone [Tyranon]
(CH ₃) ₂ COHCH ₂ COCH ₃	Diacetone Alcohol [Diacetone]
(C ₆ H ₅ CH ₂) ₂ O	Dibenzyl Ether
C ₂₄ H ₃₀ O ₄	Dibenzyl Sebecate
C ₁₈ H ₃₄ O ₄	Dibenzyl Sebecate [DBS]
(C ₄ H ₉) ₂ NH	Dibutyl Amine
(C ₄ H ₉) ₂ S	Dibutyl Mercaptan
C ₆ H ₄ [COO(CH ₂) ₃ CH ₃] ₂	Dibutyl Phthalate [DBP]
C ₆ H ₁₂ OCl ₂	Dichloro Isopropyl Ether
Cl ₂ CHCOOH	Dichloroacetic Acid
C ₄ H ₈ Cl ₂	Dichlorobutane

FORMULA	CHEMICAL
$(\text{ClCH}_2\text{CH}_2)_2\text{O}$	Dichloroethyl Ether
$(\text{C}_6\text{H}_{11})_2\text{NH}$	Dicyclohexylamine
$(\text{HOCH}_2\text{CH}_2)_2\text{NH}$	Diethanol Amine
$(\text{CH}_3\text{CH}_2)_2\text{NH}$	Diethyl Amine
$\text{C}_6\text{H}_4(\text{C}_2\text{H}_5)_2$	Diethyl Benzene
$(\text{C}_2\text{H}_5\text{O})_2\text{CO}$	Diethyl Carbonate
$(\text{CH}_3\text{CH}_2)_2\text{O}$	Diethyl Ether [Ether]
$\text{C}_6\text{H}_4(\text{CO}_2\text{C}_2\text{H}_5)_2$	Diethyl Phthalate [DEP]
$\text{C}_{14}\text{H}_{26}\text{O}_4$	Diethyl Sebecate
$\text{C}_4\text{H}_8\text{O}_2$	Diethylene Ether [Dioxane]
$\text{HOCH}_2\text{CH}_2\text{OCH}_2\text{CH}_2\text{OH}$	Diethylene Glycol [DEG]
$(\text{NH}_2\text{C}_2\text{H}_4)_2\text{NH}$	Diethylene Triamine
$\text{C}_4\text{H}_9\text{COC}_4\text{H}_9$	Diisobutyl Ketone
$[\text{HC}=\text{C}(\text{CH}_3)_2]_2$	Diisobutylene
$\text{C}_{26}\text{H}_{50}\text{O}_4$	Diisodecyl Adipate [DIDA]
$\text{C}_{28}\text{H}_{47}\text{O}_4$	Diisodecyl Phthalate [DIDP]
$\text{C}_{22}\text{H}_{42}\text{O}_4$	Diisooctyl Adipate [DIOA]
$\text{C}_{24}\text{H}_{39}\text{O}_4$	Diisooctyl Phthalate [DIOP]
$\text{C}_{26}\text{H}_{46}\text{O}_4$	Diisooctyl Sebecate [DIOS]
$[(\text{CH}_3)_2\text{CH}]_2\text{NH}$	Diisopropyl Amine
$\text{C}_6\text{H}_4 \cdot [\text{CH}(\text{CH}_3)_2]_2$	Diisopropyl Benzene
$[(\text{CH}_3)_2\text{CH}]_2\text{CO}$	Diisopropyl Ketone
CH_3OCH_3	Dimethyl Ether
$(\text{CH}_3)_2\text{NNH}_2$	Dimethyl Hydrazine
$\text{C}_6\text{H}_4(\text{CO}_2\text{CH}_3)_2$	Dimethyl Phthalate
$(\text{CH}_3)_2\text{SO}_4$	Dimethyl Sulfate
$(\text{CH}_3)_2\text{S}$	Dimethyl Sulfide
$\text{CH}_3\text{C}_6\text{H}_3(\text{NO}_2)_2$	Dinitrotoluene [DNT]
$\text{C}_{24}\text{H}_{38}\text{O}_4$	Diocetyl Phthalate [DOP]
$\text{C}_{26}\text{H}_{50}\text{O}_4$	Diocetyl Sebecate
$\text{C}_{10}\text{H}_{16}$	Dipentene [Limonene]
$\text{C}_6\text{H}_5\text{OC}_6\text{H}_5$	Diphenyl Oxides [Phenyl Ether]
$(\text{C}_3\text{H}_7)_2\text{CO}$	Dipropyl Ketone [Butyrene]
$(\text{CH}_3\text{CH}_2\text{CH}_2)_2\text{NH}$	Dipropylamine
$(\text{C}_3\text{H}_6\text{OH})_2\text{O}$	Dipropylene Glycol
$\text{C}_6\text{H}_4(\text{CH}=\text{CH}_2)_2$	Divinyl Benzene [DVB]
$\text{C}_6\text{H}_5(\text{CH}_2)_{11}\text{CH}_3$	Dodecyl Benzene [Alkane]
$\text{CH}_2\text{OCHCH}_2\text{Cl}$	Epichlorhydrin
$\text{C}_3\text{H}_5\text{ClO}$	Epichlorohydrin
$\text{MgSO}_4 \cdot 7\text{H}_2\text{O}$	Epsom Salts [Magnesium Sulfate]
C_2H_6	Ethane
$\text{H}_2\text{NCH}_2\text{CH}_2\text{OH}$	Ethanolamine
$(\text{C}_2\text{H}_5)_2\text{O}$	Ether
$\text{CH}_3\text{CH}_2\text{OH}$	Ethyl [Ethanol]
$\text{CH}_3\text{COOC}_2\text{H}_5$	Ethyl Acetate
$\text{CH}_3\text{COCH}_2\text{COOCH}_2\text{CH}_3$	Ethyl Acetoacetate [Acetoacetic Ester]
$\text{CH}_2\text{CHCO}_2\text{CH}_2\text{CH}_3$	Ethyl Acrylate
$\text{CH}_3\text{CH}_2\text{OH}$	Ethyl Alcohol [Ethanol]
$\text{CH}_3\text{CH}_2\text{AlCl}_2$	Ethyl Aluminum Dichloride
$\text{CH}_3\text{CH}_2\text{NH}_2$	Ethyl Amine [Monoethylamine]

FORMULA	CHEMICAL
$\text{CH}_3\text{CH}_2\text{C}_6\text{H}_5$	Ethyl Benzene
$\text{C}_6\text{H}_5\text{CO}_2\text{CH}_2\text{CH}_3$	Ethyl Benzoate
$\text{C}_2\text{H}_5\text{Br}$	Ethyl Bromide
$\text{CH}_3\text{CO}_2\text{CH}_2\text{CH}(\text{C}_2\text{H}_5)_2$	Ethyl Butyl Acetate
$\text{CH}_3\text{CH}(\text{C}_2\text{H}_5)(\text{CH}_2)_2\text{OH}$	Ethyl Butyl Alcohol
$\text{CH}_3\text{CH}_2\text{COC}_4\text{H}_9$	Ethyl Butyl Ketone
$\text{C}_6\text{H}_{12}\text{O}$	Ethyl Butyraldehyde
$\text{CH}_3\text{CH}_2\text{CH}_2\text{CO}_2\text{C}_2\text{H}_5$	Ethyl Butyrate
$\text{CH}_3(\text{CH}_2)_6\text{CO}_2\text{C}_2\text{H}_5$	Ethyl Caprylate
$\text{C}_2\text{H}_5\text{Cl}$	Ethyl Chloride [Chloroethane]
$\text{ClCO}_2\text{C}_2\text{H}_5$	Ethyl Chlorocarbonate [Ethyl Chloroformate]
$\text{C}_2\text{H}_5\text{CN}$	Ethyl Cyanide [Propionitrile]
$\text{HCOOCH}_2\text{CH}_3$	Ethyl Formate
$\text{CH}_3\text{CH}_2\text{I}$	Ethyl Iodide
$(\text{CH}_3)_2\text{CHCOOCH}_2\text{CH}_3$	Ethyl Isobutyrate
$\text{CH}_3\text{CH}_2\text{SH}$	Ethyl Mercaptan [Ethanethiol]
$\text{C}_2\text{H}_5\text{O}_2\text{CCO}_2\text{C}_2\text{H}_5$	Ethyl Oxalate
$\text{C}_2\text{H}_5\text{C}_6\text{Cl}_5$	Ethyl Pentachlorobenzene
$\text{CH}_3\text{CH}_2\text{COOCH}_2\text{CH}_3$	Ethyl Propionate
$\text{CH}_3\text{CH}_2\text{NH}_2$	Ethylamine
$\text{CH}_2\text{OHCH}_2\text{OH}$	Ethylene Alcohol (Glycol)
$(\text{CH}_2)_2\text{O}$	Ethylene Dichloride [Dutch Oil]
$(\text{CH}_2\text{OH})_2$	Ethylene Glycol [Ethylene Alcohol] [Glycol]
$\text{CH}_2\text{C}(\text{CH}_3)\text{COOCH}_3$	Ethylene Oxide
ClCHCCl_2	Ethylene Trichloride [Trichloroethene]
$\text{C}_2\text{H}_4(\text{NH}_2)_2$	Ethylenediamine
$\text{C}_{10}\text{H}_{20}\text{O}_2$	Ethylhexyl Acetate
$\text{C}_8\text{H}_{17}\text{OH}$	Ethylhexyl Alcohol [Ethylhexanol]
CH_3CHCl_2	Ethylidene Chloride
FeCl_3	Ferric Chloride
FeHO_2	Ferric Hydroxide
$\text{Fe}(\text{NO}_3)_3$	Ferric Nitrate
$\text{Fe}_2(\text{SO}_4)_3$	Ferric Sulfate
FeCl_2	Ferrous Chloride
FeSO_4	Ferrous Sulfate
HBF_4	Fluoboric Acid [Boro & Hydro] [Fluoroboric Acid]
FC_6H_5	Fluorobenzene
$\text{F}_x\text{C}_y\text{H}_z$	Fluorolube [Fluorocarbon Oils]
H_2SiF_6	Fluosilicic Acid [Hydro]
H_2SiF_6	Fluosilicic Acid [Sand Acid]
F_2	Fluorine
CH_2O	Formaldehyde [Formalin]
HCONH_2	Formamide
HCOOH	Formic Acid
$\text{HOOCCH} = \text{CHCOOH}$	Fumaric Acid [Boletic Acid]
$\text{C}_4\text{H}_4\text{O}$	Furan [Furfuran]
$\text{C}_5\text{H}_4\text{O}_2$	Furfural [Ant Oil]
$\text{C}_5\text{H}_6\text{O}_2$	Furfuryl Alcohol
$(\text{CH}_3)_2\text{CHCH}_2\text{CH}_2\text{OH}$	Fusel Oil [Grain Oil]
$\text{C}_6\text{H}_2(\text{OH})_3\text{COOH}$	Gallic Acid

FORMULA	CHEMICAL
$C_nJ_{2n+1}COOH$	General Formula for Fatty Acids
$C_{17}H_{26}O_4$	Ginger Oil
$Na_2SO_4 \cdot 10H_2O$	Glauber's Salt [Sodium Sulfate Decahydrate]
$C_6H_{12}O_7$	Gluconic Acid
$C_6H_{12}O_6$	Glucose [Corn Syrup]
$COOH(CH_2)_2CH(NH_2)COOH$	Glutamic Acid
$C_3H_8O_3$	Glycerine, Glycerol
$HOCH_2COOH$	Glycolic Acid
$CaSO_4 \cdot 2H_2O$	Gypsum
D_2O	Heavy water, Deuterium Oxide
He	Helium
$CH_3(CH_2)_5CHO$	Heptanal
C_7H_{16}	Heptane
$CH_3(CH_2)_4CHO$	Hexanal
C_6H_{14}	Hexane
$(CH_3)_2CHCH_2COCH_3$	Hexone [Methyl Isobutyl Ketone]
$CH_3(CH_2)_4CH_2OH$	Hexyl [1-Hexanol]
$C_6H_{12}(OH)_2$	Hexylene Glycol [Brake Fluid]
H_2NNH_2	Hydrazine
HBr	Hydrobromic Acid
HCl	Hydrochloric Acid
HCN	Hydrocyanic Acid [Prussic]
HF	Hydrofluoric Acid [Hydrogen Fluoride]
H_2	Hydrogen
H_2O_2	Hydrogen Peroxide
H_2S	Hydrogen Sulfide [Wet]
$C_6H_4(OH)_2$	Hydroquinone
$HOCH_2COOH$	Hydroxyacetic Acid - 105
HOCl	Hypochlorous Acid
I_2	Iodine
CHI_3	Iodoform
Fe_2O_3	Iron Oxide
$CH_3CO_2CH_2CH_2CH(CH_3)_2$	Isoamyl Acetate
$(CH_3)_2CHCH_2CH_2OH$	Isoamyl Alcohol
$C_9H_{18}O_2$	Isoamyl Butyrate
$(CH_3)_2CHCH_2CH_2Cl$	Isoamyl Chloride
$C_3H_7CH_2OH$	Isobutyl [2-Methyl-1-Propanol]
$CH_3CO_2CH_2CH(CH_3)_2$	Isobutyl Acetate
$(CH_3)_2CHCH_2OH$	Isobutyl Alcohol [Isobutanol]
$(CH_3)_2CHCH_2NH_2$	Isobutyl Amine
$(CH_3)_2CHCH_2Cl$	Isobutyl Chloride
$(CH_3)_2CHCOOH$	Isobutyric Acid
$(CH_3)_2CH(CH_2)_8CH_3$	Isododecane
C_8H_{18}	Isooctane [Trimethylpentane]
$(CH_3)_2CHCH_2CH_3$	Isopentane
$C_9H_{14}O$	Isophorone
$H_3CCH(OH)CH_3$	Isopropyl [2-Propanol]
$CH_3COOCH(CH_3)_2$	Isopropyl Acetate
$CH_3CH(OH)CH_3$	Isopropyl Alcohol [Isopropanol]
$C_3H_7NH_2$	Isopropyl Amine

FORMULA	CHEMICAL
$(CH_3)_2CHCl$	Isopropyl Chloride
$(CH_3)_2CHOCH(CH_3)_2$	Isopropyl Ether
$CH_3CHOH COOH$	Lactic Acid
$CH_3CHOHCO_2C_{10}H_7$	Lactol [Aliphatic Naptha Solvent]
$CH_3(CH_2)_{10}CH_2OH$	Lauryl Alcohol [n-Dodecanol]
$Pb(C_2H_3O_2)_2 \cdot 3H_2O$	Lead Acetate [Sugar of Lead]
$Pb_3(AsO_4)_2$	Lead Arsenate
$PbCl_2$	Lead Chloride
$Pb(NO_3)_2$	Lead Nitrate
Pb_3O_4 (Also PbO)	Lead Oxide Litharge
$Pb(C_2H_5)_4$	Lead Tetraethyl
$CaS+CaSO_4$	Lime Sulfur
CaO	Lime, Soda [Slaked Lime & Soda Ash]
$C_{10}H_{16}$	Limonene
$(CH_3C_6H_4O)_3PO$	Lindol [Tricresyl Phosphate] [TCP]
$C_{21}H_{21}O_4P$	Lindol [Tritolyl Phosphate]
$C_{18}H_{32}O_2$	Linoleic Acid
$LiBr$	Lithium Bromide
KOH	Lye [Potassium Hydroxide]
$MgCO_3$	Magnesium Carbonate
$MgCl_2 \cdot 6H_2O$	Magnesium Chloride
$Mg(OH)_2$	Magnesium Hydroxide [Milk of Magnesia]
$Mg(NO_3)_2 \cdot 6H_2O$	Magnesium Nitrate
MgO	Magnesium Oxide
$MgSO_4$	Magnesium Sulfate [Epsom Salts]
$(CHCOOH)_2$	Maleic Acid
$C_4H_6O_5$	Maleic Acid [Apple Acid]
$C_4H_2O_3$	Maleic Anhydride
$HgCl_2$	Mercuric Chloride
$Hg(CN)_2$	Mercuric Cyanide
$Hg_2(NO_3)_2 \cdot 2H_2O$	Mercurous Nitrate
Hg	Mercury
$(CH_3)_2C=CHCOCH_3$	Merityl Oxide
CH_4	Methane
CH_3OH	Methanol [Methyl Alcohol]
$CH_3CO_2CH_3$	Methyl Acetate
$CH_3COCH_2COOCH_3$	Methyl Acetoacetate
$CH_2CHCO_2CH_3$	Methyl Acrylate
$CH_3(CH)_2COOH$	Methyl Acrylic Acid [Crotonic Acid]
CH_3OH	Methyl Alcohol [Methanol]
CH_3NH_2	Methyl Amine [Monomethylamine]
$C_8H_{16}O_2$	Methyl Amyl Acetate
$C_6H_{13}OH$	Methyl Amyl Alcohol
$C_6H_5NH(CH_3)$	Methyl Aniline
CH_3Br	Methyl Bromide [Bromo Methane]
$CH_3COC_4H_9$	Methyl Butyl Ketone [2-hexanone]
$CH_3(CH_2)_2CO_2CH_3$	Methyl Butyrate
CH_3Cl	Methyl Chloride
C_6H_{12}	Methyl Cyclopentane
CH_2Cl_2	Methyl Dichloride

FORMULA	CHEMICAL
CH ₃ COC ₂ H ₅	Methyl Ethyl Ketone (MEK)
HCOOCH ₃	Methyl Formate
C ₇ H ₁₆	Methyl Hexane
CH ₃ I	Methyl Iodide
(CH ₃) ₂ CHCH ₂ COCH ₃	Methyl Isobutyl Ketone [Hexone]
CH ₃ COCH(CH ₃) ₂	Methyl Isopropyl Ketone
CH ₂ C(CH ₃)CO ₂ CH ₃	Methyl Methacrylate
C ₂ H ₆ O ₂	Methyl Methacrylate Slurry
C ₁₉ H ₃₆ O ₂	Methyl Oleate
CH ₃ CH ₂ CH ₂ COCH ₃	Methyl Propyl Ketone
HOC ₆ H ₄ COOCH ₃	Methyl Salicylate [Betula Oil]
CH ₃ CH ₂ COOH	Methylacetic Acid [Propionic Acid]
CH ₃ CHCHCO ₂ H	Methylacrylic Acid
CH ₃ NH ₂	Methylamine
CH ₂ Br ₂	Methylene Bromide
CH ₂ Cl ₂	Methylene Chloride
H ₂ SO ₄ +HNO ₃	Mixed Acids [Sulfuric & Nitric]
C ₆ H ₅ Cl	Monochlorobenzene
NH ₂ C ₂ H ₄ OH	Monoethanolamine
HCON(CH ₃) ₂	N,N-Dimethyl Formamide [DMF]
C ₆ H ₅ N(CH ₃) ₂	N,N-Dimethylaniline
CH ₃ (CH ₂) ₄ NH ₂	n-Amyl Amine [1-Aminopentane]
C ₁₀ H ₈	Naphthalene [Tar Camphor]
C ₁₁ H ₈ O ₂	Naphthoic Acid
C ₆ H ₁₄	Neohexane [2,2-Dimethylbutane]
Ni(CH ₃ CO ₂) ₂	Nickel Acetate
NiCl ₂	Nickel Chloride
Ni(NO ₃) ₂ ·6H ₂ O	Nickel Nitrate
NiSO ₄	Nickel Sulfate
HNO ₃	Nitric Acid
C ₆ H ₅ NO ₂	Nitrobenzene
C ₆ H ₇ O ₅ (NO ₂) ₃	Nitrocellulose
C ₂ H ₅ NO ₂	Nitroethane
N ₂	Nitrogen
N ₂ O ₄	Nitrogen Tetroxide
CH ₂ NO ₃ CHNO ₃ CH ₂ NO ₃	Nitroglycerine or Trinitro
CH ₃ NO ₂	Nitromethane
C ₆ H ₅ NH(CH ₃) ₃	N-Methyl Aniline
C ₈ H ₁₈	n-Octane
CH ₃ (CH ₂) ₂ NO ₃	NPN [n-Propyl Nitrate]
CH ₃ COO(CH ₂) ₂ CH ₃	n-Propyl Acetate
C ₇ Cl ₈	Octachlorotoluene
CH ₃ (CH ₂) ₁₆ CH ₃	Octadecane
CH ₃ (CH ₂) ₇ OH	Octyl [Caprylic Alcohol]
CH ₃ COO(CH ₂) ₇ CH ₃	Octyl Acetate
C ₆ H ₄ Cl ₂	o-Dichlorobenzene
C ₁₈ H ₃₄ O ₂	Oleic Acid [Red Oil]
C ₅₇ H ₁₀₄ O ₆	Olein[Triolene]
H ₂ SO ₄ /SO ₃	Oleum [Fuming Sulfuric Acid]
HOCCOOH·2H ₂ O	Oxalic Acid

FORMULA	CHEMICAL
O ₂	Oxygen
O ₃	Ozone
CH ₃ (CH ₂) ₁₄ COOH	Palmitic Acid
(CH ₂ O) _n	Paraformaldehyde
C ₆ H ₁₂ O ₃	Paraldehyde
C ₆ Cl ₅ OH	PCP [Pentachlorophenol]
Cl ₂ CHCCl ₃	Pentachloroethane [Pentalin]
NaS	Pentahydrate [Sodium Sulfide]
C ₅ H ₁₂	Pentane [Amyl Hydride]
C ₂ Cl ₄	Perchlorethylene
HClO ₄	Perchloric Acid
C ₆ H ₅ (CH ₂) ₂ OH	Phenethyl Alcohol [Benzyl Carbinol]
C ₆ H ₅ OC ₂ H ₅	Phenetole [Phenyl Ethyl Ether]
C ₆ H ₅ OH	Phenol [Carbolic Acid]
C ₆ H ₄ (OH)SO ₃ H	Phenol Sulfonic Acid
CH ₃ COOC ₆ H ₅	Phenyl Acetate
C ₆ H ₅ OC ₂ H ₅	Phenyl Ethyl Ether [Phenetole]
C ₆ H ₅ NHNH ₂	Phenyl Hydrazine
C ₆ H ₅	Phenylbenzene
C ₉ H ₁₄ O	Phorone [Diisopropylidene Acetone]
H ₃ PO ₄	Phosphoric Acid
POC ₁	Phosphorous Oxychloride
PCl ₃	Phosphorous Trichloride
POCl ₃	Phosphorus Oxychloride
C ₆ H ₄ (CO) ₂ O	Phthalic Anhydride
(NO ₂) ₃ C ₆ H ₂ OH	Picric Acid [Carbazotic Acid]
C ₁₀ H ₁₆	Pinene
C ₅ H ₁₁ N	Piperidine
CH ₃ CO ₂ K	Potassium acetate
AlK(SO ₄) ₂ · 12H ₂ O	Potassium Alum
KHCO ₃	Potassium Bicarbonate
KHSO ₄	Potassium Bisulfate
KHSO ₃	Potassium Bisulfite
KBr	Potassium Bromide
K ₂ CO ₃	Potassium Carbonate [Potash]
KClO ₃	Potassium Chlorate
KCl	Potassium Chloride
K ₂ CrO ₄	Potassium Chromate
K ₃ [Cu(CN) ₄]	Potassium Copper Cyanide
KCN	Potassium Cyanide
K ₂ Cr ₂ O ₇	Potassium Dichromate
KOH	Potassium Hydroxide [Caustic Potash] [Lye]
KOCl	Potassium Hypochlorite
KI	Potassium Iodide
KNO ₃	Potassium Nitrate
KNO ₂	Potassium Nitrite
KClO ₄	Potassium Perchlorate
KMnO ₄	Potassium Permanganate [Purple Salt]
KH ₂ PO ₄	Potassium Phosphate [Mono]
K ₂ Si ₂ O ₅	Potassium Silicate

FORMULA	CHEMICAL
K_2SO_4	Potassium Sulfate
K_2S	Potassium Sulfide
$K_2SO_3 \cdot 2H_2O$	Potassium Sulfite
C_3H_8	Propane
C_2H_5CHO	Propionaldehyde [Propanal]
CH_3CH_2COOH	Propionic Acid
$CH_3CH_2CO_2H$	Propionioc Acid [Methylacetic Acid]
$CH_3CH_2CH_2OH$	Propyl [Propanol]
C_3H_6	Propylene
$CH_3CH(Cl)CH_2Cl$	Propylene Dichloride
$C_3H_6(OH)_2$	Propylene Glycol [Methyl Glycol]
C_3H_6O	Propylene Oxide
$(-CH_2CHCl-)_n$	PVC
C_5H_5N	Pyridine
C_4H_5N	Pyrrole [Azole]
$NH_4(X)$	Quaternary Ammonium Salts
$C_{18}H_{34}O_2$	Red Oil [Oleic Acid]
$C_{20}H_{30}O_2$	Rosin
$C_{23}H_{22}O_6$	Rotenone
$(C_5H_8)_n/H_2O$	Rubber Latex Emulsions
NH_4Cl	Sal Ammoniac [Ammonium Chloride]
$NaCO_3$	Sal Soda [Sodium Carbonate]
HOC_6H_4COOH	Salicylic Acid
$NaCl/H_2O$	Salt Water [Brine]
SiO_2	Silica
$Si(OR)_4$	Silicate Esters
$SiCl_4$	Silicon Tetrachloride
$[(CH_3)_2SiO_2]_n$	Silicone Oils
$AgCl$	Silver Chloride
$AgCN$	Silver Cyanide
AgI	Silver Iodide
$AgNO_3$	Silver Nitrate
CH_3COONa	Sodium Acetate
$Na_2Al_2O_4$	Sodium Aluminate
$C_6H_5SO_3Na$	Sodium Benzene Sulfonate
$NaHCO_3$	Sodium Bicarbonate [Baking Soda]
$Na_2Cr_2O_7 \cdot 2H_2O$	Sodium Bichromate [Sodium Dichromate]
$NaHSO_3$	Sodium Bisulfite [Cream of Tartar]
$NaHSO_4$	Sodium Bisulfite [Niter Cake]
$Na_2B_4O_7$	Sodium Borate
$NaBr$	Sodium Bromide
$NaCO_3$	Sodium Carbonate [Sal Soda]
Na_2CO_3	Sodium Carbonate [Soda Ash]
$NaClO_3$	Sodium Chlorate
$NaCl$	Sodium Chloride
$CrH_2O_4 \cdot 2Na$	Sodium Chromate
$NaCN$	Sodium Cyanide
$Na_2Cr_2O_7 \cdot 2H_2O$	Sodium Dichromate [Sodium Bichromate]
Na_2O_2	Sodium Dioxide [Sodium Peroxide]
NaF	Sodium Fluoride

FORMULA	CHEMICAL
C ₅ H ₉ NO ₄ Na.	Sodium Glutamate (MSG)
(NaPO ₃) ₆	Sodium Hexametaphosphate [Calgon]
NaOH	Sodium Hydroxide [Caustic]
Na(OCl)	Sodium Hypochlorite
Na(PO ₃)H	Sodium Metaphosphate [Kurrol's Salt]
Na ₂ SiO ₃	Sodium Metasilicate
NaNO ₃	Sodium Nitrate [Chile Saltpeter]
NaNO ₂	Sodium Nitrite
NaBO ₃ · H ₂ O	Sodium Perborate (Mono)
NaBO ₃ · 4H ₂ O	Sodium Perborate (Tetrahydrate)
Na ₂ O ₂	Sodium Peroxide [Sodium Dioxide]
Na ₂ S ₂ O ₈	Sodium Persulfate
NaH ₂ PO ₄	Sodium Phosphate (Mono)
Na ₂ O·SiO ₂	Sodium Silicates [Water Glass]
Na ₂ SiF ₆	Sodium Silicofluoride
C ₁₇ H ₃₅ COONa	Sodium Stearate
Na ₂ SO ₄	Sodium Sulfate [Salt Cake] [Thenardite]
Na ₂ S	Sodium Sulfide [Pentahydrate]
Na ₂ SO ₃	Sodium Sulfite
Na ₂ B ₄ O ₇ ·10H ₂ O	Sodium Tetraborate
Na ₂ O ₃ S ₂	Sodium Thiosulfate [Hypo] [Antichlor]
CH ₃ (CH) ₄ COOH	Sorbic Acid
SnCl ₄	Stannic Chloride [Tin Chloride]
SnF ₂	Stannous Fluoride [Tin Salt]
(C ₆ H ₁₀ O ₅) _x	Starch
CH ₃ (CH ₂) ₁₆ COOH	Stearic Acid
C ₆ H ₅ CHCH ₂	Styrene [Vinylbenzene]
H ₂ NSO ₃ H	Sulfamic Acid
S ₂ Cl ₂	Sulfur Chloride
SF ₆	Sulfur Hexafluoride
SO ₃	Sulfur Trioxide
H ₂ SO ₄	Sulfuric Acid
H ₂ SO ₃	Sulfurous Acid
S	Sulphur
SO ₂	Sulphur Dioxide
Mg ₃ S ₁₄ O ₁₀ (OH) ₂	Talc Slurry
C ₇₆ H ₅₂ O ₄₆	Tannic Acid
HOOCCH(OH)CH(OH)COOH	Tartaric Acid
(CH ₃ C ₆ H ₄ O) ₃ PO	TCP [Lindol] [Tricresyl Phosphate]
C ₁₀ H ₁₈ O	Terpineol [Terpilenol]
C ₄ H ₁₀ S	Tertiary Butyl Mercaptan
(CH ₃) ₃ COH	Tertiary Butyl Alcohol
C ₉ H ₁₄ O ₂	Tertiary Butyl Catechol
CBr ₄	Tetra Bromomethane
Ti(C ₄ H ₉)	Tetrabutyl Titanate
(Cl ₂ FC) ₂	Tetrachlorodifluoroethane
(Cl ₂ HC) ₂	Tetrachloroethane [Acetylene Tetrachloride]
Cl ₂ C=CCl ₂	Tetrachloroethylene
Pb(C ₂ H ₅) ₄	Tetraethyl Lead
HOCH ₂ (CH ₂ OCH ₂) ₃ CH ₂ OH	Tetraethylene Glycol [TEG]

FORMULA	CHEMICAL
$C_4H_8O_2$	Tetrahydrofuran [THF]
$C_{10}H_{12}$	Tetrahydronaphthalene [Tetralin]
$CH_2SH COOH$	Thioglycolic Acid
$SOCl_2$	Thionyl Chloride
C_4H_4S	Thiophene
TiO_2	Titanium Dioxide
$TiCl_4$	Titanium Tetrachloride
$C_6H_5CH_3$	Toluene
C_7H_8	Toluene [Toluol]
$CH_3C_6H_3(NCO)_2$	Toluene Diisocyanate
$CH_3C_6H_4NH_2$	Toluidine
$C_3H_5(OCOCH_3)_3$	Triacetin
$P(OC_3H_5)_3$	Triallyl Phosphate
$(C_4H_9O)_3P(C_2H_5)$	Tributoxyl Ethyl Phosphate
$(C_4H_9)_3PO_4$	Tributyl Phosphate [TBP]
CCl_3COOH	Trichloroacetic Acid [TCA]
$C_6H_3Cl_3$	Trichlorobenzenes
$C_2H_3Cl_3$	Trichloroethane
C_2HCl_3	Trichloroethylene
$CH_2ClCHClCH_2Cl$	Trichloropropane
$(CH_3C_6H_4O)_3PO$	Tricresyl Phosphate [Lindol] [TCP]
$C_{12}H_{25}CH_2OH$	Tridecyl Alcohol [Tridecanol]
$N(C_2H_4OH)_3$	Triethanol Amine [TEA]
$(CH_2OHCH_2)_3N$	Triethanolamine
$Al(C_2H_5)_3$	Triethyl Aluminum [ATE]
$(CH_3CH_2)_3N$	Triethyl Amine
$(C_2H_5)_3B$	Triethyl Borane
$HOCH_2CH_2OCH_2CH_2OCH_2CH_2OH$	Triethylene Glycol [TEG]
$HO(CH_2)_3OH$	Trimethylene Glycol
$CH_3C_6H_2(NO_2)_3$	Trinitrotoluene [TNT]
$(C_8H_{17}O)_3PO$	Trioctyl Phosphate
$C_{10}H_{16}$	Turpentine
$CO(NH_2)_2$	Urea
$CH_3(CH_2)_3COOH$	Valeric Acid
$C_6H_3(CHO)(OCH_3)(OH)$	Vanilla Extract (Vanillin)
$CH_3COOCHCH_2$	Vinyl Acetate
CH_2CHCl	Vinyl Chloride [Chloroethylene]
CH_2CHCl	Vinyl Chloride Monomer
$C_6H_5CHCH_2$	Vinylbenzene [Styrene]
H_2O	Water
$C_6H_4(CH_3)_2$	Xylene
$(CH_3)_2C_6H_3NH_2$	Xylidines [Zylidin]
$Zn(CH_3COO)_2 \cdot 2H_2O$	Zinc Acetate
$ZnCO_3$	Zinc Carbonate
$ZnCl_2$	Zinc Chloride
$ZnHSO_3$	Zinc Hydrosulfite
ZnO	Zinc Oxide
$ZnSO_4 \cdot 7H_2O$	Zinc Sulfate
ZnS	Zinc Sulfide

Metering Pump Accessories Save \$\$\$\$

Prevent unsafe and inefficient systems by design.

ACCUDRAW Calibration Cylinders



PVC Glass Poly

- PVC, glass, polypropylene
- translucent, chemical resistant
- coloured graduations and lettering
- threaded or socket connections
- standard sizes 100 ml to 20,000 ml

Custom built in other sizes and materials.

TOP VALVE Back Pressure/Pressure Relief



- long life diaphragm
- range of 0 – 150 PSIG
- air release, optional gauge port
- PVC, CPVC, PVDF, PTFE, polypropylene, stainless, Alloy 20 and Hastelloy C
- 7 sizes 1/4" – 2" NPT
- colour coded handles indicate size

Designed to enhance the accuracy and safety of your metering pumps.

ACCU-PULSE

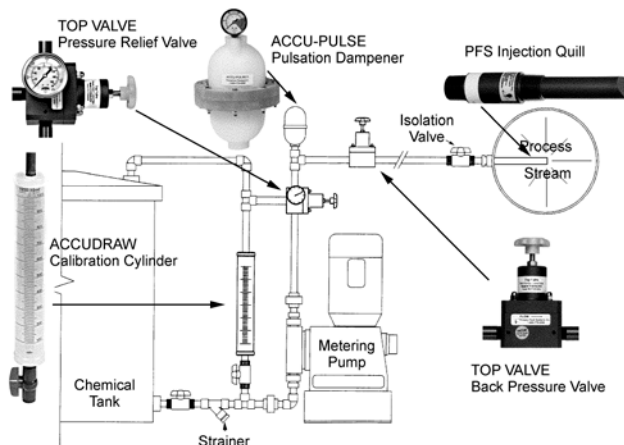
Pulsation Dampeners



Designed to remove pulsating flows from positive displacement pumps.

- increase system efficiency and pump life
- decrease maintenance and costs
- protect pipes, meters, valves and instrumentation from pulsation and vibration
- ensure meter accuracy, longevity and repeatability
- prevent foaming and splashing
- extensive range of materials and sizes
- lightweight, compact design

Typical Metering Pump System



AutoCad drawings available from our web site.

Visit www.primaryfluid.com

PFS Injection Quills



Designed to inject chemical into the center stream of process.

- provides for a more homogenous mix in the pipeline
- built-in checks to prevent back siphoning
- 2 sizes 6" and 8" length
- 1/2" or 3/4" NPT, BSPT or Flg'd Conn.
- PVC, CPVC, PVDF, polypropylene, Stainless, Hastelloy C & Titanium
- pressure to 3000 PSIG
- temperature to 260°C (500°F)

Custom built in other sizes and materials.

Accu-Vent



Designed to automatically vent gases and vapours.

- vents gases and vapors released from Sodium Hypochlorite, Sulfuric Acid & Hydrogen Peroxide
- CPVC (Corzan) and Viton corrosion resistant wetted materials of construction
- specially designed float material automatically vents built up gases on system start up and under working pressure
- standard 1/2" or 3/4" NPT threaded connections or optional socket weld
- available in other materials

PFS Corporation Stops



Designed to inject chemical into the center stream of process.

- isolation valve allows for ease of maintenance
- available in 6 materials of construction
- wetted components have comparable or greater chemical resistance than quill construction material
- standard and custom lengths available
- connection in NPT, metric or flanged

Custom built in other sizes & materials.



**PRIMARY FLUID
SYSTEMS INC.**

Call Toll Free 1-800-776-6580
Tel (905) 333-8743 Fax (905) 333-8746

E-mail: primary@primaryfluid.com
<http://www.primaryfluid.com>