

TOP VALVE*

*pat. #5,857,486 & 5,944,050

Backpressure and Pressure Relief Valves 2024 USA List Price

Table of Contents

Page	
2	Standard 150# Backpressure and Pressure Relief Valves
3	Flanged Non-Metallic Valves
4	Welded Flanged Metallic
5	Threaded Companion Flanged Valves
6	High Pressure Series
7	High Temperature Series
8	Dimensional Drawings
9	Parts Breakdown Schematic
11	Parts Pricing
13	Top Valve Accessories
14	Clamping Device
15	Typical Installations
16	Terms and Conditions

e.g.: Part # TVBP50-S/S-V-S

TV - B - P - 50 - S/S - V - S

Top Valve

Valve Type

B = Backpressure
P = Pressure Relief (3 port)
P2= Pressure Relief (2 port)

Valve style or connection

P = Backpressure, FNPT thr'd
R = Pressure relief, FNPT thr'd* (3 port)
*(Do Not Add to Part # for P2 Valve)**
FW = Welded Flanged
FT = Thr'd Companion Flg'd
F = Flanged Non-Metallic
S = Socket
B = BSPT thread
T = High Temperature to 300°F (149C°)
H = High Pressure to 350 psig – Metallic
M = Mid-Range Pressure to 230 psig – Thermoplastic
U = Union Type Connection (S/S only, see page 4)

Valve Port Connection Size

25 = ¼"	10 = 1"
45 = ¼ / ½"	15 = 1½"
50 = ½"	20 = 2"
75 = ¾"	

Top Options

Polycarbonate Top (standard on ½" – 2" sizes)
C = CPVC Top (standard on 25 & 45)
P = PVC Top (optional 1.5" +)
A = Aluminum Top
S = 316 S/S Top

Misc. Options

E = EPDM Diaphragm
V = Viton Diaphragm
G = Gauge Port

Body Material of Construction

PVC = Polyvinylchloride
CPVC = Corzan
PP = Polypropylene
(unavailable for mid-range valves)
PVDF = Polyvinylidene fluoride
S/S = 316 Stainless steel
ALL20 = Alloy 20
Hast = Hastelloy C 276

Distributed by:

Manufactured by:



PRIMARY FLUID SYSTEMS INC. TEL (905) 333-8743
FAX (905) 333-8746

E-Mail: primary@primaryfluid.com

<http://www.primaryfluid.com>



TOP VALVE*

*pat. #5,857,486 & 5,944,050

CODING:

E.g.: Top Valve, Back Pressure valve, ¼”npt, PVDF wetted material, the Part #TVBP25-PVDF

See ordering codes on first page for optional materials, connections, and styles.

Standard diaphragm material is TFE/EPDM.

Prices below are for 150# rated valves only.

(Std. Top material is Polycarbonate and S/S fasteners for sizes ½” up to 2”.)

(Std. Top material is CPVC for sizes ¼” and ¼” / ½”.)

NOTE: CRN is available on certain valves. Please contact factory for price and availability.

Back Pressure Valves (NPT/BSPT or Socket Weld)

CODE A

Size Model	¼" npt TVBP25-__	½" npt TVBP45-__ ¼" body	½" npt TVBP50-__	¾" npt TVBP75-__	1" npt TVBP10-__	1½" npt TVBP15-__	2" npt TVBP20-__
-PVC	\$ 256.00	\$ 277.00	\$ 377.00	\$ 414.00	\$ 539.00	\$ 967.00	\$ 1,258.00
-CPVC	\$ 373.00	\$ 440.00	\$ 475.00	\$ 503.00	\$ 750.00	\$ 1,067.00	\$ 1,814.00
-PP	\$ 265.00	\$ 304.00	\$ 396.00	\$ 423.00	\$ 547.00	\$ 1,014.00	\$ 1,385.00
-PVDF	\$ 506.00	\$ 564.00	\$ 719.00	\$ 753.00	\$ 987.00	\$ 1,543.00	\$ 2,684.00
-S/S	\$ 625.00	\$ 702.00	\$ 737.00	\$ 775.00	\$ 1,018.00	\$ 1,799.00	\$ 2,806.00
-ALL20	Call Factory	N/A	Call Factory	Call Factory	Call Factory	Call Factory	Call Factory
-HAST	Call Factory	N/A	Call Factory	Call Factory	Call Factory	Call Factory	Call Factory

Note: See Page 3 for Additional Options

Pressure Relief Valves (3 port in line design) (NPT/BSPT or Socket Weld)

CODE A

Size Model	¼" npt TVPR25-__	½" npt TVPR45-__ ¼" body	½" npt TVPR50-__	¾" npt TVPR75-__	1" npt TVPR10-__	1½" npt TVPR15-__	2" npt TVPR20-__
-PVC	\$ 287.00	\$ 308.00	\$ 404.00	\$ 450.00	\$ 585.00	\$ 1,069.00	\$ 1,387.00
-CPVC	\$ 415.00	\$ 458.00	\$ 514.00	\$ 535.00	\$ 806.00	\$ 1,148.00	\$ 1,969.00
-PP	\$ 297.00	\$ 320.00	\$ 414.00	\$ 459.00	\$ 589.00	\$ 1,085.00	\$ 1,416.00
-PVDF	\$ 560.00	\$ 579.00	\$ 752.00	\$ 826.00	\$ 1,075.00	\$ 1,712.00	\$ 2,979.00
-S/S	\$ 654.00	\$ 724.00	\$ 787.00	\$ 839.00	\$ 1,108.00	\$ 1,911.00	\$ 2,989.00
-ALL20	Call Factory	N/A	Call Factory	Call Factory	Call Factory	Call Factory	Call Factory
-HAST	Call Factory	N/A	Call Factory	Call Factory	Call Factory	Call Factory	Call Factory

Note: See Page 3 for Additional Options

Pressure Relief Valves (2 port off line) (NPT/BSPT or Socket Weld)

CODE A

Size Model	¼" npt TVP2-25-__	½" npt TVP2-45-__ ¼" body	½" npt TVP2-50-__	¾" npt TVP2-75-__	1" npt TVP2-10-__	1½" npt TVP2-15-__	2" npt TVP2-20-__
-PVC	\$ 256.00	\$ 277.00	\$ 377.00	\$ 414.00	\$ 539.00	\$ 967.00	\$ 1,258.00
-CPVC	\$ 373.00	\$ 440.00	\$ 475.00	\$ 503.00	\$ 750.00	\$ 1,067.00	\$ 1,814.00
-PP	\$ 265.00	\$ 304.00	\$ 396.00	\$ 423.00	\$ 547.00	\$ 1,014.00	\$ 1,385.00
-PVDF	\$ 506.00	\$ 564.00	\$ 719.00	\$ 753.00	\$ 987.00	\$ 1,543.00	\$ 2,684.00
-S/S	\$ 625.00	\$ 702.00	\$ 737.00	\$ 775.00	\$ 1,018.00	\$ 1,799.00	\$ 2,806.00
-ALL20	Call Factory	N/A	Call Factory	Call Factory	Call Factory	Call Factory	Call Factory
-HAST	Call Factory	N/A	Call Factory	Call Factory	Call Factory	Call Factory	Call Factory

Note: See Page 3 for Additional Options

Optional Tops (Adder to above Valves)

Model + Code	TVxx25-__	TVxx45-__	TVxx50-__	TVxx75-__	TVxx10-__	TVxx15-__	TVxx20-__
Aluminum = A	\$ 203.00	\$ 203.00	\$ 269.00	\$ 269.00	\$ 336.00	\$ 435.00	\$ 435.00
316S/ = S	\$ 370.00	\$ 370.00	\$ 435.00	\$ 435.00	\$ 475.00	\$ 802.00	\$ 802.00
CPVC = C	\$ 100.00	\$ 100.00	\$ 110.00	\$ 110.00	\$ 148.00	\$ 622.00	\$ 622.00

Mid-Range Pressure Thermoplastic Valves

20-230 psig range. Available in PVC, CPVC, and PVDF. List Adder - \$70.00

Flanged Non-Metallic Valves

This series incorporates 150# socket-welded flanges on the PVC and CPVC valves. And threaded 150# companion flanges on Polypropylene and PVDF valves.

The CPVC and PVDF flanged valves are also available in the High Temperature series and prices are on application.

CODING:

E.g.: Top Valve, Back Pressure valve, 1/2" flg, PVDF wetted material, the Part #TVBF50-PVDF

Flanged Back Pressure Valves

CODE B

Size Model	1/4" flg. TVBF25-__	1/2" flg. TVBF45-__ 1/4" body	1/2" flg. TVBF50-__	3/4" flg. TVBF75-__	1" flg. TVBF10-__	1 1/2" flg. TVBF15-__	2" flg. TVBF20-__
-PVC	N/A	\$ 451.00	\$ 491.00	\$ 542.00	\$ 700.00	\$ 1,258.00	\$ 1,616.00
-CPVC	N/A	\$ 601.00	\$ 617.00	\$ 654.00	\$ 936.00	\$ 1,386.00	\$ 1,987.00
-PP	N/A	\$ 571.00	\$ 754.00	\$ 884.00	\$ 1,015.00	\$ 1,574.00	\$ 2,268.00
-PVDF	N/A	\$ 1,195.00	\$ 1,281.00	\$ 1,399.00	\$ 1,899.00	\$ 2,537.00	\$ 5,312.00

Note: See Page 3 for Additional Options

Flanged Pressure Relief Valves (3 port in line design)

CODE B

Size Model	1/4" flg. TVPF25-__	1/2" flg. TVPF45-__ 1/4" body	1/2" flg. TVPF50-__	3/4" flg. TVPF75-__	1" flg. TVPF10-__	1 1/2" flg. TVPF15-__	2" flg. TVPF20-__
-PVC	N/A	\$ 535.00	\$ 529.00	\$ 585.00	\$ 760.00	\$ 1,392.00	\$ 1,680.00
-CPVC	N/A	\$ 662.00	\$ 670.00	\$ 697.00	\$ 1,011.00	\$ 1,499.00	\$ 2,080.00
-PP	N/A	\$ 707.00	\$ 867.00	\$ 980.00	\$ 1,071.00	\$ 1,607.00	\$ 2,375.00
-PVDF	N/A	\$ 1,513.00	\$ 1,574.00	\$ 1,751.00	\$ 2,408.00	\$ 3,216.00	\$ 5,588.00

Note: See Page 3 for Additional Options

Flanged Pressure Relief Valves (2 port off line)

CODE B

Size Model	1/4" flg. TVP2F25-__	1/2" flg. TVP2F45-__ 1/4" body	1/2" flg. TVP2F50-__	3/4" flg. TVP2F75-__	1" flg. TVP2F10-__	1 1/2" flg. TVP2F15-__	2" flg. TVP2F20-__
-PVC	N/A	\$ 451.00	\$ 491.00	\$ 542.00	\$ 700.00	\$ 1,258.00	\$ 1,616.00
-CPVC	N/A	\$ 601.00	\$ 617.00	\$ 654.00	\$ 936.00	\$ 1,386.00	\$ 1,987.00
-PP	N/A	\$ 571.00	\$ 754.00	\$ 884.00	\$ 1,015.00	\$ 1,574.00	\$ 2,268.00
-PVDF	N/A	\$ 1,195.00	\$ 1,281.00	\$ 1,399.00	\$ 1,899.00	\$ 2,537.00	\$ 5,312.00

Note: See Page 3 for Additional Options

Welded Flanged Metallic Valves

This series incorporates 150# weld neck flanges on all metallic valves (Top of polycarbonate material on 1/2" to 2" sizes). These flanged valves are also available in the High Temperature and High Pressure series with prices available on application.

CODING:

E.g.: Top Valve, Back Pressure valve, 1/2" flg, 316 S/S wetted material, the Part #TVBFW50-S/S

Welded Flanged Back Pressure Valves

CODE B

Size Model	1/4" flg. TVBFW25-__	1/2" flg. TVBFW45-__ 1/4" body	1/2" flg. TVBFW50-__	3/4" flg. TVBFW75-__	1" flg. TVBFW10-__	1 1/2" flg. TVBFW15-__	2" flg. TVBFW20-__
-S/S	N/A	\$1,330.00	\$1,394.00	\$1,463.00	\$1,953.00	\$3,367.00	\$4,574.00
For Alloy20 or Hastelloy C please call the Factory							

Note: See Page 3 for Additional Options

Welded Flanged Pressure Relief Valves (3 port in line design)

CODE B

Size Model	1/4" flg. TVPFW25-__	1/2" flg. TVPFW45-__ 1/4" body	1/2" flg. TVPFW50-__	3/4" flg. TVPFW75-__	1" flg. TVPFW10-__	1 1/2" flg. TVPFW15-__	2" flg. TVPFW20-__
-S/S	N/A	\$1,681.00	\$1,826.00	\$1,911.00	\$2,567.00	\$4,427.00	\$4,904.00
For Alloy20 or Hastelloy C please call the Factory							

Note: See Page 3 for Additional Options

Welded Flanged Pressure Relief Valves (2 port off line)

CODE B

Size Model	1/4" flg. TVP2FW25-__	1/2" flg. TVP2FW45-__ 1/4" body	1/2" flg. TVP2FW50-__	3/4" flg. TVP2FW75-__	1" flg. TVP2FW10-__	1 1/2" flg. TVP2FW15-__	2" flg. TVP2FW20-__
-S/S	N/A	\$1,330.00	\$1,394.00	\$1,463.00	\$1,953.00	\$3,367.00	\$4,574.00
For Alloy20 or Hastelloy C please call the Factory							

Note: See Page 3 for Additional Options

Union Type Connections

This series incorporates union nuts on 316L Stainless Steel valves (top of polycarbonate material). These Union valves are also available in High Temperature and High Pressure Series with prices available on application.

Union Type Back Pressure Valves

Size Model	1/4" NPT TVBU25-__	1/2" NPT TVBU45-__ 1/4" body	1/2" NPT TVBU50-__
-S/S	\$1,328.00	\$1,337.00	\$1,325.00

Note: Available with BSP Thread, Add Suffix -B to part number.

Union Type 2-Port Pressure Relief Valves

Size Model	1/4" NPT TVP2U25-__	1/2" NPT TVP2U45-__ 1/4" body	1/2" NPT TVP2U50-__
-S/S	\$1,328.00	\$1,337.00	\$1,325.00

Note: Available with BSP Thread, Add Suffix -B to part number.

Threaded Companion Flanged Metallic Valves

This series incorporates 150# threaded companion flanges on all metallic valves.

CODING:

E.g.: Top Valve, Back Pressure valve, 1/2" flg, 316 S/S wetted material, the Part #TVBFT50-S/S

Threaded Flanged Back Pressure Valves

CODE B

Size Model	¼" flg. TVBFT25-__	½" flg. TVBFT45-__ ¼" body	½" flg. TVBFT50-__	¾" flg. TVBFT75-__	1" flg. TVBFT10-__	1½" flg. TVBFT15-__	2" flg. TVBFT20-__
-S/S	N/A	\$ 751.00	\$ 892.00	\$ 963.00	\$ 1,233.00	\$2,521.00	\$3,774.00
For Alloy20 or Hastelloy C please call the Factory							

Note: See Page 3 for Additional Options

Threaded Flanged Pressure Relief Valves (3 port in line design)

CODE B

Size Model	¼" flg. TVPFT25-__	½" flg. TVPFT45-__ ¼" body	½" flg. TVPFT50-__	¾" flg. TVPFT75-__	1" flg. TVPFT10-__	1½" flg. TVPFT15-__	2" flg. TVPFT20-__
-S/S	N/A	N/A	\$1,124.00	\$1,181.00	\$1,443.00	\$2,866.00	\$4,186.00
For Alloy20 or Hastelloy C please call the Factory							

Note: See Page 3 for Additional Options

Threaded Flanged Pressure Relief Valves (2 port off line)

CODE B

Size Model	¼" flg. TVPFT25-__	½" flg. TVPFT45-__ ¼" body	½" flg. TVPFT50-__	¾" flg. TVPFT75-__	1" flg. TVPFT10-__	1½" flg. TVPFT15-__	2" flg. TVPFT20-__
-S/S	N/A	\$ 751.00	\$ 892.00	\$ 963.00	\$ 1,233.00	\$2,521.00	\$3,774.00
For Alloy20 or Hastelloy C please call the Factory							

Note: See Page 3 for Additional Options

Temperature Correction Factors: Thermoplastics

Temperature Effects: Thermoplastics and thermosets will decrease in tensile strength as the temperature increases; therefore, the working pressure must be reduced accordingly. The following factors will apply:

The maximum pressure rating for valves regardless of size is 150 PSIG (1034 kPa) at 73° F (22°C)

NR = not recommended

Operating Temperatures		Factors			
F	C	PVC	CPVC	PP	PVDF
70	21	1.00	1.00	1.00	1.00
80	27	1.00	1.00	1.00	1.00
90	32	1.00	1.00	1.00	1.00
100	38	.90	1.00	1.00	1.00
110	43	.83	1.00	.91	1.00
115	46	.75	1.00	.87	1.00
120	49	.66	1.00	.83	1.00
125	52	.58	.97	.79	1.00
130	54	.50	.95	.75	1.00
140	60	.33	.90	.66	1.00
150	66	NR	.80	.60	.97
160	71	NR	.70	.53	.93
170	77	NR	.60	.43	.86
180	82	NR	.50	.33	.80
200	93	NR	.33	NR	.66
210	99	NR	NR	NR	.60
240	116	NR	NR	NR	.40
280	138	NR	NR	NR	.16

Primary Fluid Systems, Inc. takes no responsibility for the enclosed data

High Pressure Series

(Metallic body to 350 psig, Thermoplastic body to 230 psig)

Pressure setting range from 50 to 350 psig

This series incorporates a metallic top, viton diaphragm, high pressure spring with metallic top and bottom discs. Viton diaphragm is the standard, optional diaphragm material available upon request.

The metallic top is made of aluminum, optional metallic materials available upon request.

NOTE: CRN is available on certain valves. Please contact factory for price and availability.

CODING:

E.g.: Top Valve, Back Pressure, High Pressure valve, ¼"npt, 316 S/S wetted material, the Part #TVBH25-S/S

See ordering codes on first page for optional materials, connections, and styles.

For flanged or socket weld connections please contact factory for pricing.

High Pressure Back Pressure Valves (NPT/BSPT or Socket Weld)

CODE A

Size Model	¼" npt TVBH25-__	½" npt TVBH45-__ ¼" body	½" npt TVBH50-__	¾" npt TVBH75-__	1" npt TVBH10-__	1½" npt TVBH15-__	2" npt TVBH20-__
-S/S	\$ 775.00	\$ 848.00	\$ 948.00	\$ 986.00	\$ 1,285.00	\$ 2,224.00	\$ 3,225.00
-ALL20	Call Factory	N/A	Call Factory	Call Factory	Call Factory	Call Factory	Call Factory
-HAST	Call Factory	N/A	Call Factory	Call Factory	Call Factory	Call Factory	Call Factory

Note: See Page 3 for Additional Options

High Pressure Relief Valves (3 port in line design) (NPT/BSPT or Socket Weld)

CODE A

Size Model	¼" npt TVPH25-__	½" npt TVPH45-__ ¼" body	½" npt TVPH50-__	¾" npt TVPH75-__	1" npt TVPH10-__	1½" npt TVPH15-__	2" npt TVPH20-__
-S/S	\$ 793.00	\$ 867.00	\$ 999.00	\$ 1,034.00	\$ 1,374.00	\$ 2,356.00	\$ 3,380.00
-ALL20	Call Factory	N/A	Call Factory	Call Factory	Call Factory	Call Factory	Call Factory
-HAST	Call Factory	N/A	Call Factory	Call Factory	Call Factory	Call Factory	Call Factory

Note: See Page 3 for Additional Options

High Pressure Relief Valves (2 port in line design) (NPT/BSPT or Socket Weld)

CODE A

Size Model	¼" npt TVP2H25-__	½" npt TVP2H45-__ ¼" body	½" npt TVP2H50-__	¾" npt TVP2H75-__	1" npt TVP2H10-__	1½" npt TVP2H15-__	2" npt TVP2H20-__
-S/S	\$ 775.00	\$ 848.00	\$ 948.00	\$ 986.00	\$ 1,285.00	\$ 2,224.00	\$ 3,225.00
-ALL20	Call Factory	N/A	Call Factory	Call Factory	Call Factory	Call Factory	Call Factory
-HAST	Call Factory	N/A	Call Factory	Call Factory	Call Factory	Call Factory	Call Factory

Note: See Page 3 for Additional Options

The above List Prices are for sale based on the terms described on page 16.

High Temperature Series

This series is designed for temperature applications that exceed the maximum 140°F rating of our standard valves with CPVC or PVC tops. These valves come standard with an aluminum top, viton diaphragm and metallic spring discs.

CODING:

E.g.: Top Valve, Back Pressure, High Temperature valve, 1/2" npt, 316 S/S wetted material, the Part #TVBT50-S/S

See ordering codes on first page for optional materials, connections, and styles.

For flanged or socket weld connections please contact factory for pricing.

NOTE: CRN is available on certain valves. Please contact factory for price and availability.

High Temperature Back Pressure Valves (NPT/BSPT or Socket Weld)

CODE A

Size Model	¼" npt TVBT25-__	½" npt TVBT45-__ ¼" body	½" npt TVBT50-__	¾" npt TVBT75-__	1" npt TVBT10-__	1½" npt TVBT15-__	2" npt TVBT20-__
-CPVC	\$ 509.00	\$ 571.00	\$ 653.00	\$ 680.00	\$ 936.00	\$ 1,443.00	Call Factory
-PVDF	\$ 637.00	\$ 687.00	\$ 893.00	\$ 933.00	\$ 1,204.00	\$ 1,919.00	\$ 3,216.00
-316S/S	\$ 746.00	\$ 819.00	\$ 914.00	\$ 952.00	\$ 1,234.00	\$ 2,154.00	\$ 3,345.00

Note: See Page 3 for Additional Options

High Temperature Pressure Relief Valves (3 port in line design) (NPT/BSPT or Socket Weld)

CODE A

Size Model	¼" npt TVPT25-__	½" npt TVPT45-__ ¼" body	½" npt TVPT50-__	¾" npt TVPT75-__	1" npt TVPT10-__	1½" npt TVPT15-__	2" npt TVPT20-__
-CPVC	\$ 547.00	\$ 587.00	\$ 691.00	\$ 715.00	\$ 990.00	\$ 1,448.00	Call Factory
-PVDF	\$ 685.00	\$ 701.00	\$ 932.00	\$ 1,002.00	\$ 1,292.00	\$ 1,984.00	\$ 3,444.00
-316S/S	\$ 764.00	\$ 837.00	\$ 964.00	\$ 1,040.00	\$ 1,324.00	\$ 2,172.00	\$ 3,487.00

For Alloy20 or Hastelloy C please call the Factory

Note: See Page 3 for Additional Options

High Temperature Pressure Relief Valves (2 port in line design) (NPT/BSPT or Socket Weld)

CODE A

Size Model	¼" npt TVP2T25-__	½" npt TVP2T45-__ ¼" body	½" npt TVP2T50-__	¾" npt TVP2T75-__	1" npt TVP2T10-__	1½" npt TVP2T15-__	2" npt TVP2T20-__
-CPVC	\$ 509.00	\$ 571.00	\$ 653.00	\$ 680.00	\$ 936.00	\$ 1,443.00	Call Factory
-PVDF	\$ 637.00	\$ 687.00	\$ 893.00	\$ 933.00	\$ 1,204.00	\$ 1,919.00	\$ 3,216.00
-316S/S	\$ 746.00	\$ 819.00	\$ 914.00	\$ 952.00	\$ 1,234.00	\$ 2,154.00	\$ 3,345.00

For Alloy20 or Hastelloy C please call the Factory

Note: See Page 3 for Additional Options

Valve Options/Documentation/Testing

Gauge Port **All Models** add suffix **-G** to Valve model number

Diaphragm Options (EPDM, Viton)

Certificate of Conformance

Metallurgical Test Reports (Alloy wetted bodies)

Air Leak Test Report/Set Pressure Certificate

Hydrostatic Leak Test

PMI Testing (Alloy wetted bodies)

List Adder \$ 53.00

List Adder \$ N/C

Net Adder \$ 13.00/per model

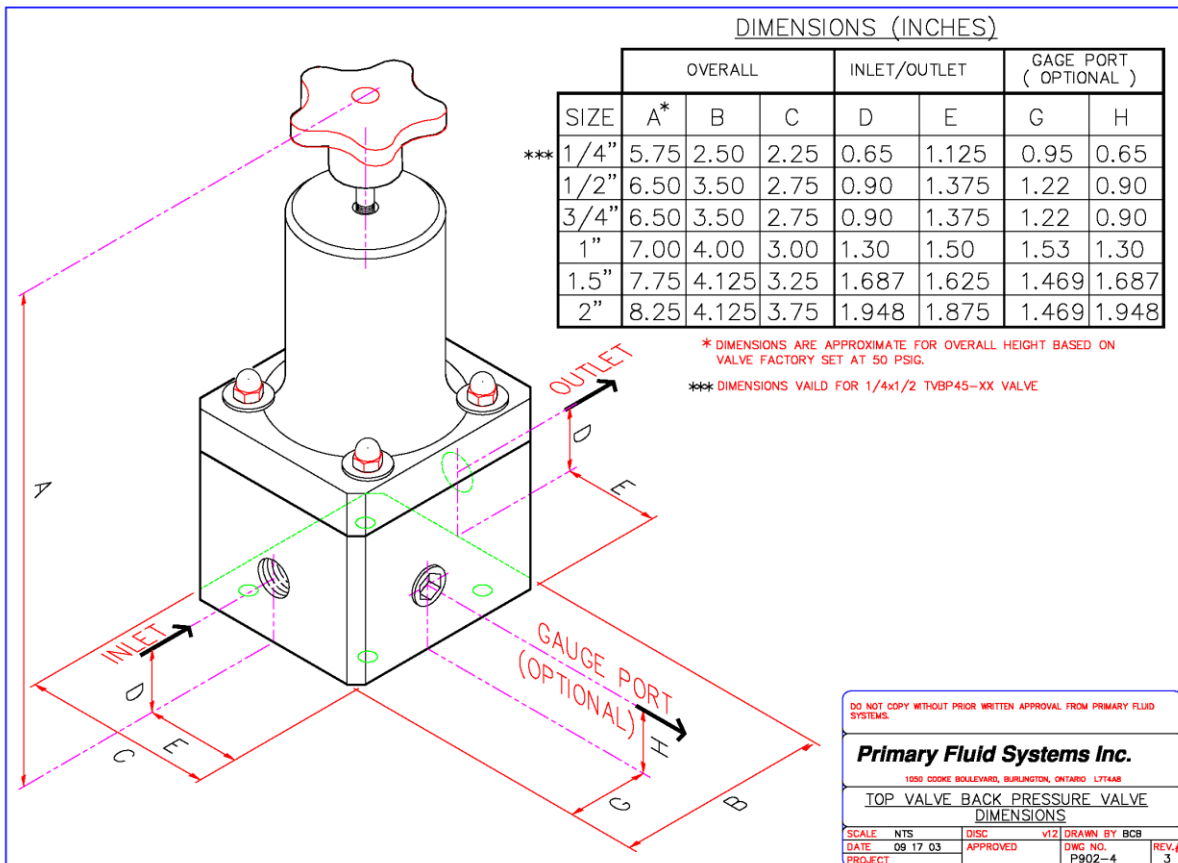
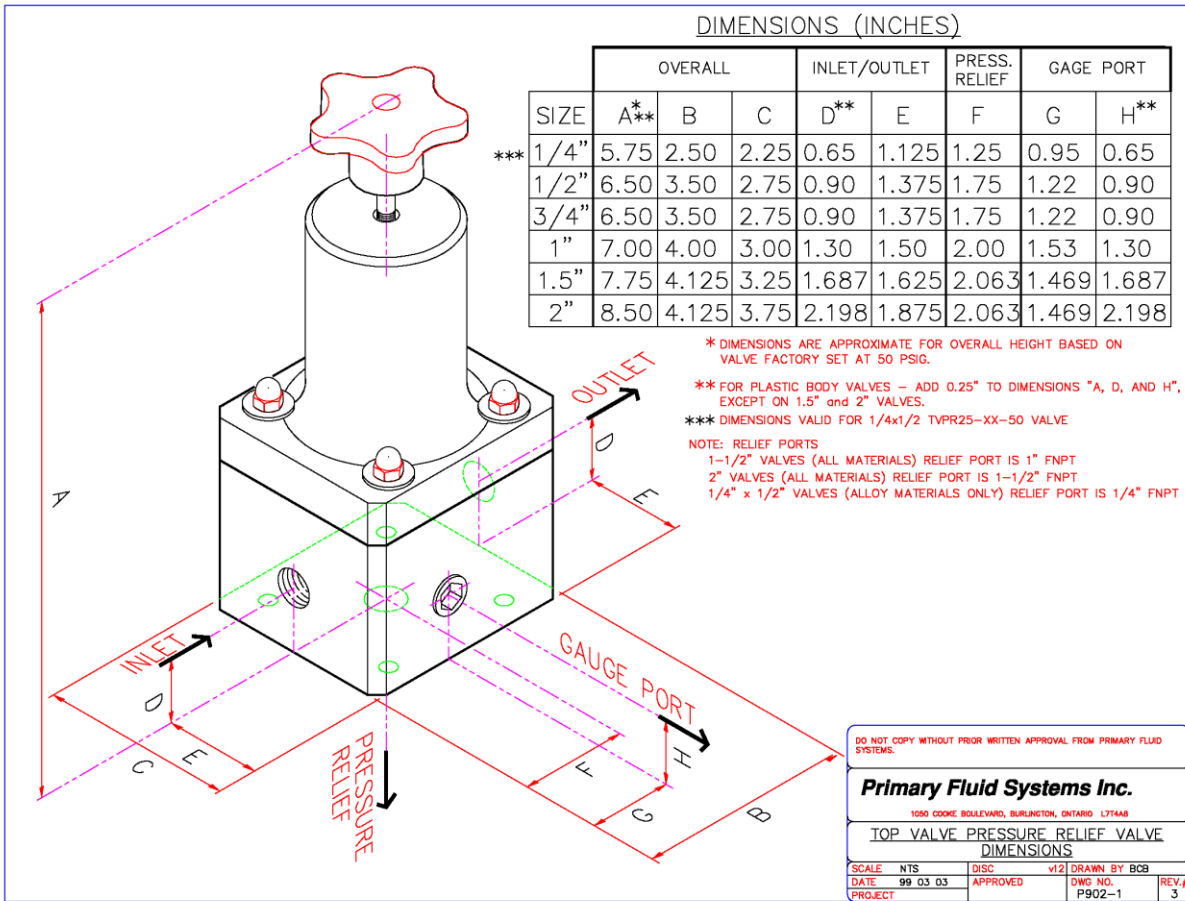
Net Adder \$ 40.00/per model

Net Adder \$ 35.00/per valve

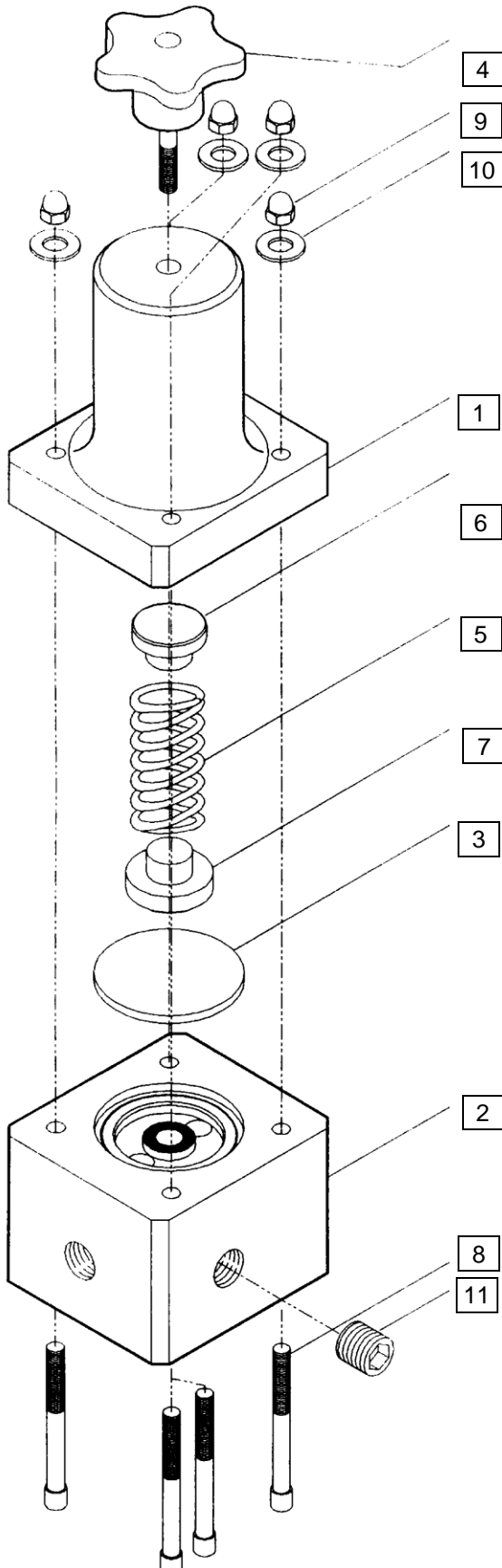
Net Adder \$ 164.00/per valve

Net Adder \$ Call factory

The above List Prices are for sale based on the terms described on page 16.

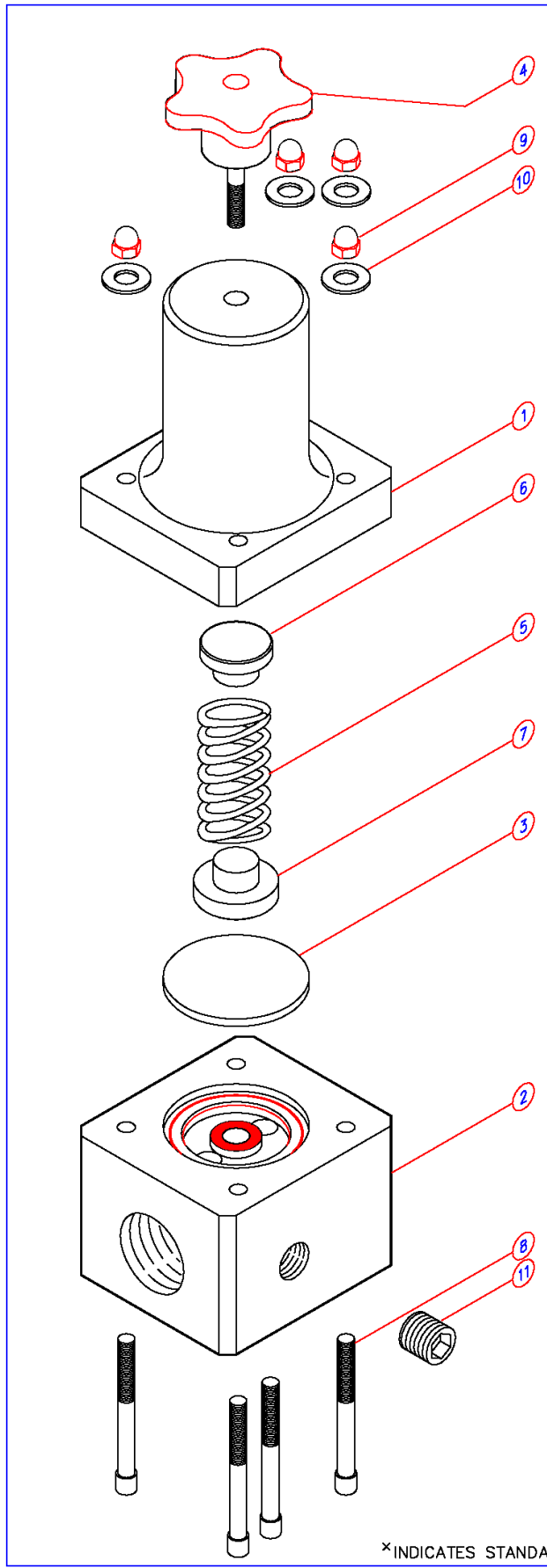


Parts Breakdown Schematic



Key	Part#	Description
1	TVT-1PC-__	Top
2	TV_-2_-_-	Body
3	TVD-3-__	Diaphragm*
4	TV_K-4	Knob
5	TVS-5-__	Spring*
6	TVTD-6-__	Top Disc*
7	TVBD-7-__	Bottom Disc*
8	TV_B-8-__	Bolts
9	TVN-9-__	Nuts
10	TVW-10-__	Washers
11	TVP-11-__	Plug (Optional) Gage

* Indicates recommended spare parts



MATERIAL/SIZE CODING			
X = PC = (POLYCARBONATE) ^x X = CPVC = (CPVC CORZAN) X = S6 = (316 STAINLESS STEEL) X = A = (ALUMINUM)			
** = 25 = 1/4" & 1/4"/1/2" VALVES ** = 57 = 1/2" & 3/4" VALVES ** = 10 = 1" VALVES ** = 15 = 1-1/2" VALVES ** = 20 = 2" VALVES			
Ω = B = BACK PRESSURE Ω = P =PRESSURE RELIEF			
Ø = "BLANK" = STD PTFE LAM. EPDM ^x Ø = V = OPTIONAL VITON Ø = E = OPTIONAL EPDM Ø = P = OPTIONAL PVC			
Φ = 25 = 1/4" VALVES Φ = 45 = 1/4"/1/2" VALVES Φ = 50 = 1/2" VALVES Φ = 75 = 3/4" VALVES Φ = 10 = 1" VALVES Φ = 15 = 1-1/2" VALVES Φ = 20 = 2" VALVES			
^ = PVC = (PVC TYPE 1) ^ = CPVC = (CPVC CORZAN) ^ = PP= (POLYPROPYLENE) ^ = PVDF = (POLYVINYLIDENE FLUORIDE KYNAR) ^ = S/S = (316 STAINLESS STEEL) ^ = HASTC = (HASTELLOY C276) ^ = ALL20 = (ALLOY20)			
⊗ = G = GREEN = 1/4" VALVES ⊗ = O = ORANGE = 1/4"/1/2" VALVES ⊗ = Y = YELLOW = 1/2" VALVES ⊗ = R = RED = 3/4" VALVES ⊗ = B = BLUE = 1" VALVES ⊗ = BK = BLACK = 1-1/2" VALVES ⊗ = W = WHITE = 2" VALVES			
⊕ = 25 = 1/4" & 1/4"/1/2" VALVES ⊕ = 51 = 1/2" THRU 2" VALVES			
ITEM#	QTY	DESCRIPTION	PART#
1	1	TOP	TVT-1 <u>X</u> - **
2	1	BODY	TV <u>Ω</u> -2 <u>^</u> - <u>Φ</u>
3	1	DIAPHRAGM	TVD-3- ** - <u>Ø</u>
4	1	KNOB	TV <u>⊗</u> K-4
5	1	SPRING	TVS-5- <u>⊕</u>
6	1	TOP DISC	TVTD-6- <u>⊕</u>
7	1	BOTTOM DISC	TVBD-7- <u>⊕</u>
8	4	BOLTS*	TV <u>Ω</u> B-8 -**
9	4	NUTS	TVN-9- <u>⊕</u>
10	4	WASHERS	TVW-10- <u>⊕</u>
11	1	GAUGE PLUG (OPTIONAL)	TVP-11- <u>^</u>

*UNDERLINED ITEMS REQUIRE CODES FROM ABOVE CHART
 *1-1/2" PRESSURE RELIEF VALVES USE TVBB-8-15
 *2" PRESSURE RELIEF VALVES USE TVBB-8-20

DO NOT COPY WITHOUT PRIOR WRITTEN APPROVAL FROM PRIMARY FLUID SYSTEMS INC.

PRIMARY FLUID SYSTEMS INC.
 1050 Cooke Blvd, Burlington, Ontario L7T 4A8

BACK PRESSURE & PRESSURE RELIEF VALVE
 EXPLODED PARTS VIEW

DATE ISSUED: 12/18/2020 SCALE: NTS SHEET: 1 OF 1
 PROJECT: TOP VALVE DRAWN BY: BRB

APPROVED BY: DWG NO.: TV-PA-257520STD-XPL REV.# 7

^x INDICATES STANDARD CONSTRUCTION

TOP VALVE PARTS

USA SUGGESTED PRICE LIST

CODE E

Key	ITEM	PART#	PRICE	PART#	PRICE	PART#	PRICE		
1	TOP	TVT-1CPVC-25	\$ 353.00	TVT-1CPVC-57	\$ 406.00	TVT-1CPVC-10	\$ 471.00		
		TVT-1PVC-15	\$ 182.00	TVT-1PVC-20	\$ 182.00	TVT-1A-25	\$ 236.00		
		TVT-1A-57	\$ 312.00	TVT-1A-10	\$ 392.00	TVT-1A-15	\$ 509.00		
		TVT-1A-20	\$ 509.00	TVT-1PC+25	\$ 331.00	TVT-1PC+57	\$ 406.00		
		TVT-1PC+10	\$ 471.00						
2	BODY	TVB-2PVC-25	\$ 216.00	TVB-2CPVC-25	\$ 228.00	TVB-2PP-25	\$ 136.00		
		TVB-2PVC-45	\$ 220.00	TVB-2CPVC-45	\$ 265.00	TVB-2PP-45	\$ 144.00		
		TVB-2PVC-50	\$ 298.00	TVB-2CPVC-50	\$ 403.00	TVB-2PP-50	\$ 346.00		
		TVB-2PVC-75	\$ 298.00	TVB-2CPVC-75	\$ 411.00	TVB-2PP-75	\$ 346.00		
		TVB-2PVC-10	\$ 401.00	TVB-2CPVC-10	\$ 599.00	TVB-2PP-10	\$ 403.00		
		TVB-2PVC-15	\$ 612.00	TVB-2CPVC-15	\$ 892.00	TVB-2PP-15	\$ 656.00		
		TVB-2PVC-20	\$ 650.00	TVB-2CPVC-20	\$1,031.00	TVB-2PP-20	\$ 963.00		
		TVB-2TFE-25	Call Factory	TVB-2PVDF-25	\$ 403.00	TVB-2S/S-25	\$ 608.00		
				TVB-2PVDF-45	\$ 583.00	TVB-2S/S-45	\$ 621.00		
		TVB-2TFE-50	Call Factory	TVB-2PVDF-50	\$ 717.00	TVB-2S/S-50	\$ 683.00		
		TVB-2TFE-75	Call Factory	TVB-2PVDF-75	\$ 779.00	TVB-2S/S-75	\$ 703.00		
		TVB-2TFE-10	Call Factory	TVB-2PVDF-10	\$1,178.00	TVB-2S/S-10	\$ 834.00		
		TVB-2TFE-15	Call Factory	TVB-2PVDF-15	\$2,178.00	TVB-2S/S-15	\$ 916.00		
		TVB-2TFE-20	Call Factory	TVB-2PVDF-20	\$2,843.00	TVB-2S/S-20	\$1,154.00		
			All Alloy20 Bodies	Call Factory					
			All Hastelloy Bodies	Call Factory					
				TVP-2PVC-25	\$ 261.00	TVP-2CPVC-25	\$ 318.00	TVP-2PP-25	\$ 312.00
				TVP-2PVC-45	\$ 261.00	TVP-2CPVC-45	\$ 318.00	TVP-2PP-45	\$ 330.00
TVP-2PVC-50	\$ 308.00			TVP-2CPVC-50	\$ 444.00	TVP-2PP-50	\$ 374.00		
TVP-2PVC-75	\$ 308.00			TVP-2CPVC-75	\$ 606.00	TVP-2PP-75	\$ 381.00		
TVP-2PVC-10	\$ 459.00			TVP-2CPVC-10	\$ 968.00	TVP-2PP-10	\$ 442.00		
TVP-2PVC-15	\$ 650.00			TVP-2CPVC-15	\$ 948.00	TVP-2PP-15	\$ 739.00		
TVP-2PVC-20	\$ 690.00			TVP-2CPVC-20	\$1,031.00	TVP-2PP-20	\$1,174.00		
TVP-2TFE-25	Call Factory			TVP-2PVDF-25	\$ 456.00	TVP-2S/S-25	\$ 394.00		
				TVP-2PVDF-45	\$ 583.00	TVP-2S/S-45	\$ 421.00		
TVP-2TFE-50	Call Factory			TVP-2PVDF-50	\$ 594.00	TVP-2S/S-50	\$ 462.00		
TVP-2TFE-75	Call Factory			TVP-2PVDF-75	\$ 796.00	TVP-2S/S-75	\$ 462.00		
TVP-2TFE-10	Call Factory			TVP-2PVDF-10	\$1,239.00	TVP-2S/S-10	\$ 942.00		
TVP-2TFE-15	Call Factory			TVP-2PVDF-15	\$2,298.00	TVP-2S/S-15	\$1,011.00		
TVP-2TFE-20	Call Factory			TVP-2PVDF-20	\$2,989.00	TVP-2S/S-20	\$1,252.00		
	All Alloy20 Bodies			Call Factory					
	All Hastelloy Bodies			Call Factory					
3	DIAPHRAGM			TVD-3-25-1	\$ 36.00	TVD-3-57	\$ 77.00	TVD-3-10	\$ 87.00
				TVD-3-15	\$ 101.00	TVD-3-20	\$ 101.00	TVD-3-25-1-V	\$ 36.00
		TVD-3-57-V	\$ 77.00	TVD-3-10-V	\$ 87.00	TVD-3-15-V	\$ 101.00		
		TVD-3-20-V	\$ 101.00						

TOP VALVE PARTS
USA SUGGESTED PRICE LIST

CODE E

Key	ITEM	PART#	PRICE	PART#	PRICE	PART#	PRICE
4	KNOB	TVGK-4	\$ 8.95	TVRK-4	\$ 10.75	TVOK-4	\$ 9.55
		TVYK-4	\$ 9.20	TVBK-4	\$ 14.75	TVWK-4	\$ 15.50
5	SPRING	TVS-5-25	\$ 23.00	TVS-5-2H	\$138.00	TVS-5-2M	\$ 23.00
		TVS-5-51	\$ 41.00	TVS-5-5H	\$196.00	TVS-5-5M	\$ 47.00
6	TOP DISC	TVTD-6-25	\$ 7.80	TVTD-6-2H	\$ 56.00	TVTD-6-2M	\$ 56.00
		TVTD-6-51	\$ 7.80	TVTD-6-5H	\$ 43.00	TVTD-6-5M	\$ 43.00
7	BOTTOM DISC	TVBD-7-25	\$ 8.65	TVBD-7-2H	\$ 56.00	TVBD-6-2M	\$ 56.00
		TVBD-7-51	\$ 8.65	TVBD-7-5H	\$ 56.00	TVBD-6-5M	\$ 56.00
8	BOLTS	TVBB-8-25	\$ 2.85	TVBB-8-20	\$ 13.25	TVPB-8-15	\$ 7.80
		TVBB-8-57	\$ 2.85	TVPB-8-25	\$ 3.10		
		TVBB-8-10	\$ 5.70	TVPB-8-57	\$ 3.10		
		TVBB-8-15	\$ 7.80	TVPB-8-10	\$ 5.70		
9	NUTS	TVN-9-25	\$ 2.85	TVN-9-51	\$ 2.85		
10	WASHERS	TVW-10-25	\$ 1.55	TVW-10-51	\$ 1.55		
11	PLUG (Gauge)	TVP-11PVC	\$ 8.65	TVP-11PVDF	\$ 15.50	TVP-11ALL20	\$ 66.00
		TVP-11CPVC	\$ 7.80	TVP-11TFE	\$ 14.25	TVP-11HASTC	\$ 97.00
		TVP-11PP	\$ 7.80	TVP-11S/S6	\$ 10.15		

All available parts are not listed in the above list.
A complete Parts Catalogue is available @
http://www.primaryfluid.com/pdf/us_parts_pricing_catalogue.pdf

Top Valve Accessories

Compression Fittings for connecting Top Valve to plastic tubing in line.

These compression fittings are available in two materials of construction, both with stainless steel grippers for a pressure rating of 220 psig.

The prefix letter "P" in the part code stands for Polypropylene material.
The prefix letter "K" in the part code stands for PVDF (Kynar) material.

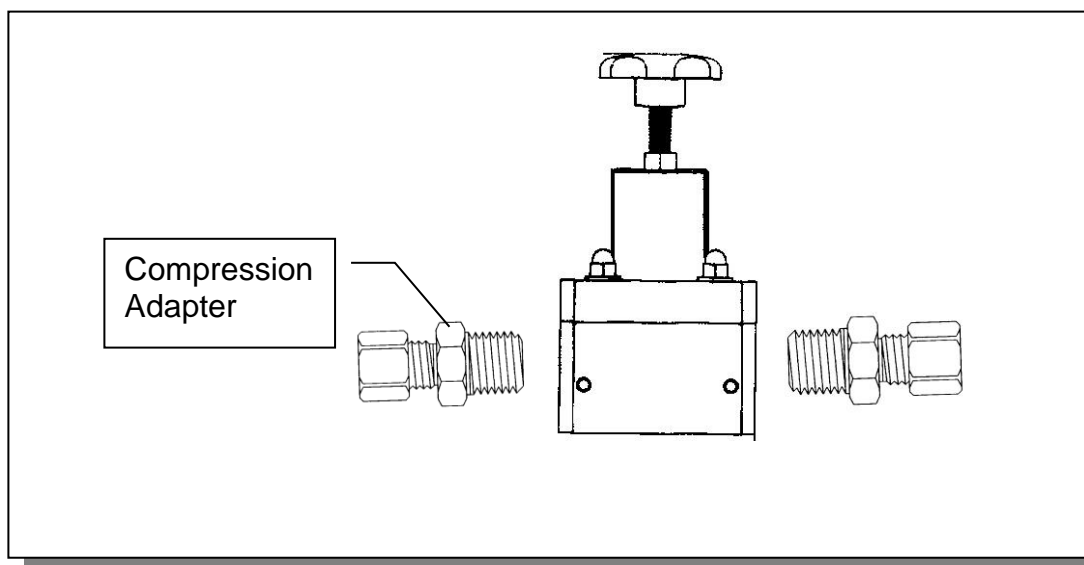
The "SG" in the part code stands for Stainless Steel gripper.

Polypropylene

Size (pipe X tube)	Part #	Price	CODE D
1/4" x 1/4	P368SG-4B	\$ 5.70	
1/4" x 3/8	P368SG-6B	\$ 7.15	
1/4" x 1/2	P368SG-8B	\$ 10.15	
1/2" x 3/8	P368SG-6D	\$ 15.50	
1/2" x 1/2	P368SG-8D	\$ 10.15	
1/2" x 5/8	P368SG-10D	\$ 13.25	
1/2" x 3/4	P368SG-12D	\$ 15.50	

PVDF (Kynar)

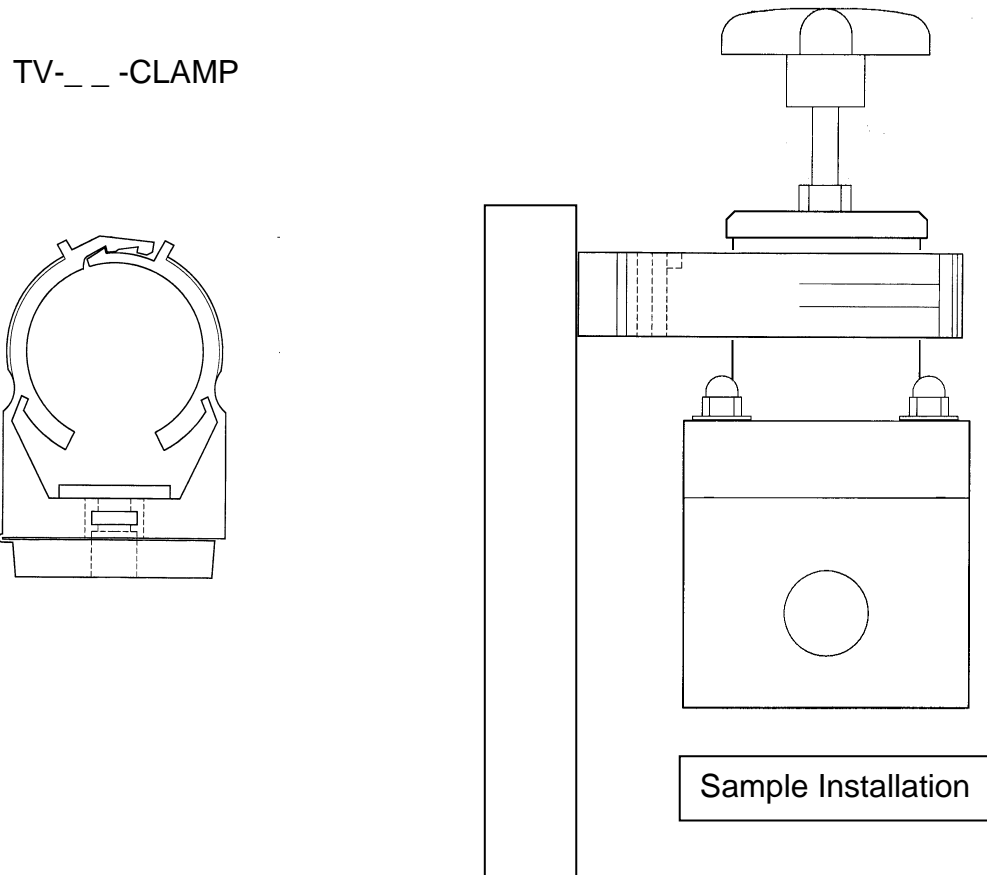
Size (pipe X tube)	Part #	Price	CODE D
1/4" x 1/4	K368SG-4B	\$ 23.00	
1/4" x 3/8	K368SG-6B	\$ 32.00	
1/4" x 1/2	K268SG-8B	\$ 43.00	
1/2" x 3/8	K368SG-6D	\$ 38.00	
1/2" x 1/2	K368SG-8D	\$ 41.00	
1/2" x 5/8	K368SG-10D	\$ 52.00	
1/2" x 3/4	K368SG-12D	\$ 70.00	



Clamping Device for TOP VALVE, Back Pressure and Pressure Relief Valves

This polypropylene-clamping device now makes it even easier than ever to support TOP VALVE, back pressure or pressure relief valves in service, to help eliminate pipe strain and the need for expensive mounting brackets.

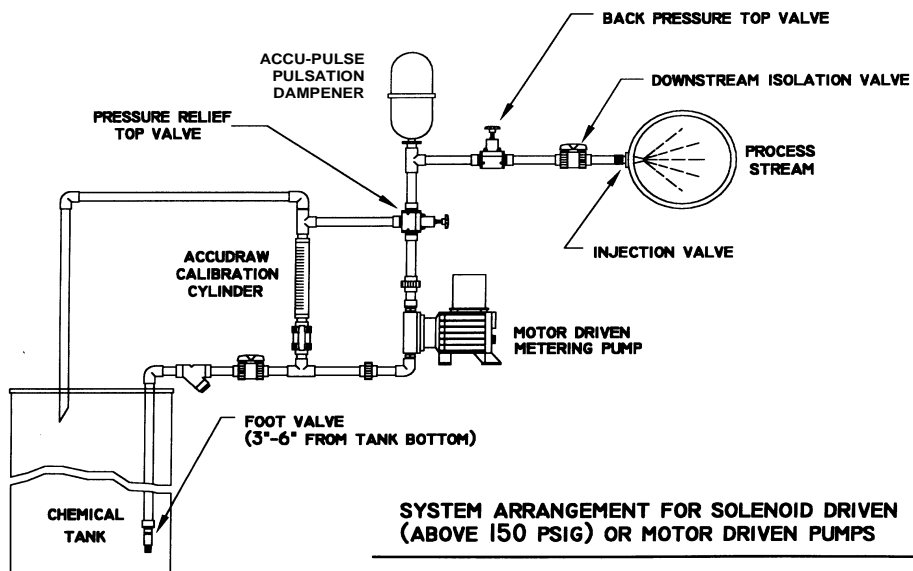
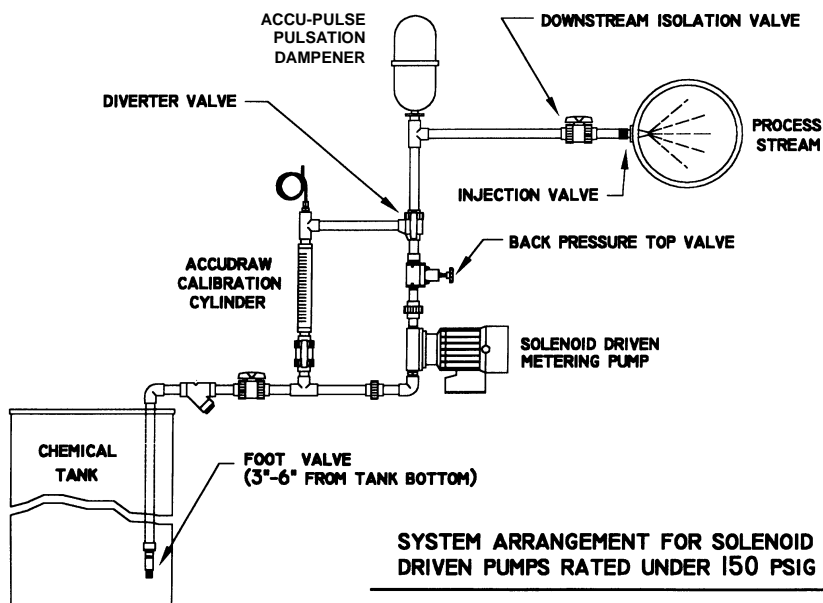
It is simple to install, economical to purchase, and we have reworked the top of the valve body now available on all new valves to assist with the support.



Part #	CODE D USA List Price
TV-25-CLAMP to fit ¼" Valves and ¼" / ½" Valves	\$ 4.70 ea
TV-51-CLAMP to fit ½" through 2" Valves	\$ 5.80 ea

Typical Installations

The installations below are typical installation examples only. Consult your Engineering Department for the appropriate installation of your application or call the factory for advice.



TERMS AND CONDITIONS

Minimum order for stocking distributors is \$300.00 net cost.
Minimum order for resale or OEM is \$100.00 net cost.

Special Terms are as follows:

Net 30 days from date of invoice (**Firm**)

All outstanding invoices will have a 2% service charge applied from 60 days on and every 30 days thereafter. The account will also be put on hold, until payment, including service charge is received.

All shipments are based on F.O.B. our Plant. Delivery on standard valves is 2-3 days (dependent on size of order and availability of components from stock). All taxes are extra.

Primary Fluid Systems Inc. covers all brokerage charges on standard **non-rush shipments**.

Restocking charge is 20%.

All goods to be returned for warranty inspection will require a R.G.A. # that can be obtained from our office. Goods to be shipped prepaid to our plant. This includes goods being returned for restocking.

For CRN Valves, add 10% of list to Net cost.

Prices subject to change without notice.

LIMITED WARRANTY

Primary Fluid Systems Inc. (Primary) warrants its products against defects in workmanship or materials for one (1) year under normal use. Three-(3) year available when application card is completed and returned to factory. Application card can be obtained by e-mailing request to sales@primaryfluid.com

Primary's obligations and liabilities under this warranty shall be limited to replacement of the product, or a refund of an amount not to exceed the purchase price of the product(s) to which such warranty claim is made. Repairs or replacements are made subject to our inspection of the returned product(s). Primary's decision of one of these alternatives shall be the buyer's exclusive remedy.

This warranty does not extend to damage by corrosion or other decomposition by chemical action. Primary does not warrant damages caused by (a) improper use of the product, (b) unauthorized modification or attachment to product, (c) misuse, abuse, accident or negligent handling or installation of product, or (d) alterations or repairs made by purchaser.

The materials of construction offered are recommendations only, subject in all cases to acceptance by purchaser. These recommendations do not constitute any guarantee against corrosion or decomposition but are based on previous experience and best available information of the industry.

Statements and instructions set forth herein are based on the best information and practices known to Primary, but it should not be assumed that every acceptable safety procedure is contained herein. Of necessity Primary cannot guarantee that actions in accordance with such statements and instructions will result in the complete elimination of hazards and it assumes no liability for accidents that may occur.

Except as specifically provided herein, Primary makes no warranty, representations, promise or guarantee, either express or implied, statutory, or otherwise, with respect to the product and technical information provided, including the products' quality, performance, merchantability, or fitness for a particular purpose.

In no event will Primary be liable for indirect, special, incidental, economic, covert, or consequential damages arising out of the use or inability to use the product, including without limitation, damages or costs relating to the loss of profits, business and good will even if advised of the possibility of such damages. In no event shall Primary's liability exceed the amount paid by you for the product.

The warranty and remedies set forth herein are exclusive and in lieu of all others, oral or written, express or implied. No Primary dealer, distributor, agent, or employee is authorized to make any modification or addition to this warranty. This warranty gives you specific legal rights and you may also have other rights which vary from state to state.